

Dunstable Office:

**01582 477 077**



**HOUSEHOLD**  
estate agents

Residential Sales • Property Management • Lettings



20 Tudor Court, Dunstable, Beds, LU6 1NJ

**£875 Per Month**





## 20 Tudor Court, Dunstable, Beds, LU6 1NJ

BRIGHT, SPACIOUS & NEWLY REFURBISHED PROPERTY. The benefits to offer on this property include BRAND NEW FITTED KITCHEN, BRAND NEW MODERN BATHROOM, HARD FLOORING THROUGHOUT, LARGE LOUNGE DINER, ALLOCATED PARKING & DOUBLE GLAZING. The property is AVAILABLE IMMEDIATELY on an UNFURNISHED BASIS.

Tudor Court is located just to the north of Dunstable's Town Centre and is within walking distance to all of it's amenities including local shops and schools. To fully appreciate the fantastic benefits on offer please contact your local HOUSEHOLD LETTING AGENTS office without further delay to arrange an appointment to view.



### Entrance Hall

### Bathroom

### Bedroom 2

9'3" x 8'5" (2.81m x 2.57m)

### Lounge/Diner

13'4" x 12'6" (4.07m x 3.80m)

### Kitchen

9'3" x 7'7" (2.81m x 2.31m)

### Master Bedroom

9'11" x 13'7" (3.01m x 4.14m)

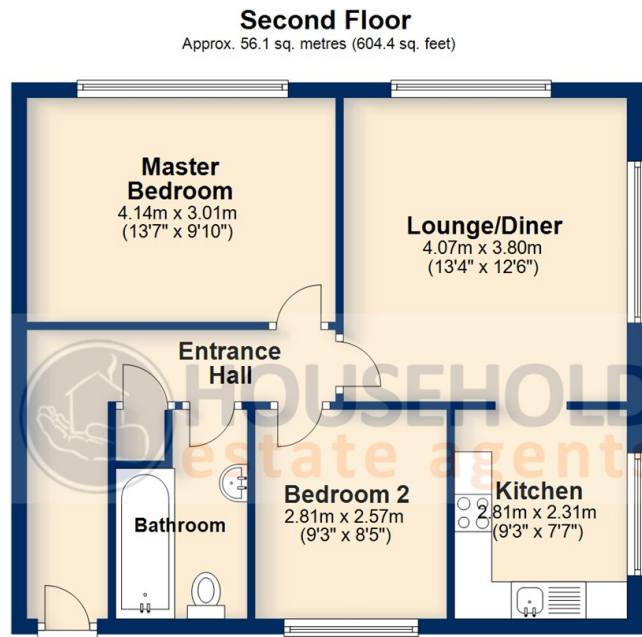
### Communal







Floor Plan



Total area: approx. 56.1 sq. metres (604.4 sq. feet)

Floorplans are for illustrative purposes only, are not to scale and should be viewed with this in mind. Whilst every attempt is made to ensure the accuracy, all measurements, positioning, fixtures, fittings and any other data shown are an approximate interpretation. Household Estate Agents Ltd will not be held liable or responsible for any error, omission, miss-statement or use of any data shown on the final floorplan.

Plan produced using PlanUp.

Viewing

Please contact our Dunstable - Sales Office on 01582 477 077 if you wish to arrange a viewing appointment for this property or require further information.

address: 15b High Street North  
Dunstable, Beds LU6 1HX

telephone: 01582 477 077

email: dunstable@house-hold.co.uk

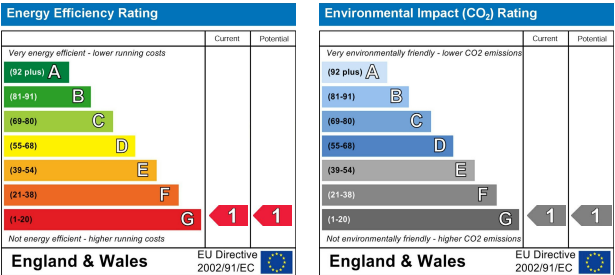
website: www.house-hold.co.uk

Additional Office: **Toddington:** 2-4 High Street  
- 01525 877 771

Area Map



EPC



The Property Experts with the Personal Touch

MISDESCRIPTIIONS ACT: Household Estate Agents Ltd. For themselves and for the vendors of this property, whose agents they are, give notice that the particulars are set out as a general outline only for the guidance of intending purchasers and do not constitute or constitute part of any offer of contract, All descriptions, dimensions references to the condition and necessary permissions for use and occupation and other details are given without responsibility, and the intending purchasers should not rely upon them as statements or representations of fact but must satisfy themselves by inspection or otherwise as to their correctness. No person in the employment of Household Estate Agents Limited has any authority to give or make any representation or warranty whatsoever in relation to this property.