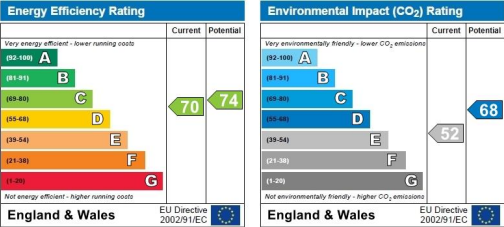
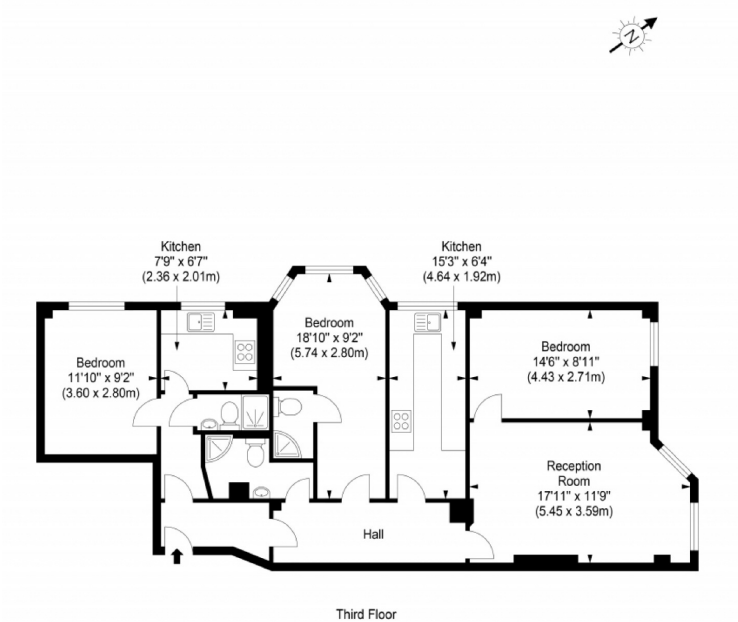




- 3 bedroom
  - 3 bathrooms
- Bright & spacious throughout
  - Period portered block
- Close to Marble Arch
  - Modern Kitchen

Park West, W2 2QZ  
Approx. Gross Internal Area 978 sq ft - 90.86 sq m



Ref  
Disclaimer : Floor plan measurements are approximate and are for illustrative purposes only  
While we do not doubt the floor plan accuracy and completeness, you or your advisors should  
conduct a careful, independent investigation of the property in respect of monetary valuation

Copyright THEBLÉUPLAN