

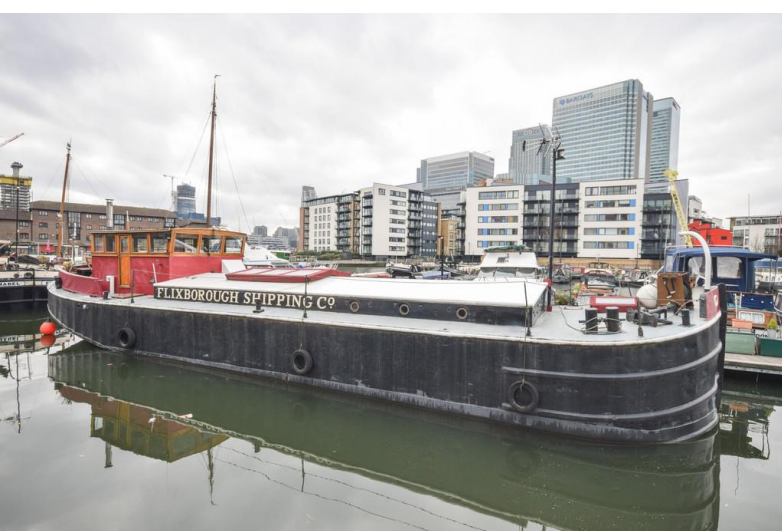


Edwin Pittwood, Docklands, E14

- Houseboat For Sale
- London Mooring
- Moments From Canary Wharf
- 2 Large Double Cabins

Asking Price Of £295,000

EPC Rating '70'





53 Bethnal Green Road
Shoreditch
London
E1 6LA

www.peachproperties.com
info@peachproperties.com
0207 739 6969

Important Notice 1. Particulars: These particulars are not an offer or contract, nor part of one. You should not rely on statements by Peach Properties (UK) Ltd in the particulars or by word of mouth or in writing ("information") as being factually accurate about the property, its condition or its value. Neither Peach Properties (UK) Ltd nor any joint agent has any authority to make any representations about the property, and accordingly any information given is entirely without responsibility on the part of the agents, seller(s) or lessor(s). 2. Photos etc: The photographs show only certain parts of the property as they appeared at the time they were taken. Areas, measurements and distances given are approximate only. 3. Regulations etc: Any reference to alterations to, or use of, any part of the property does not mean that any necessary planning, building regulations or other consent has been obtained. A buyer or lessee must find out by inspection or in other ways that these matters have been properly dealt with and that all information is correct. 4. VAT: The VAT position relating to the property may change without notice. Particulars dated April 2016. Photographs dated April 2016. Peach Properties (UK) Ltd, Registered in England and Wales, Company Registration No. 06755175, Registered office, 53 Bethnal Green Road, London, E1 6LA.