

27 Pennine Avenue, Luton, LU3 3EJ

£1,200 PCM

Benjamin Stevens are delighted to present this three bedroom semi-detached house to let in the Sundon Park region of Luton. This family home boasts a spacious kitchen/dining room and two reception rooms. Upstairs you have 3 large double bedrooms, a bathroom and a wet room for easy access. The property benefits from having gas central heating, double glazed windows, white goods and an off road parking space.

Available from March

Please call today to arrange your viewing!

Bedroom 1

Bathroom

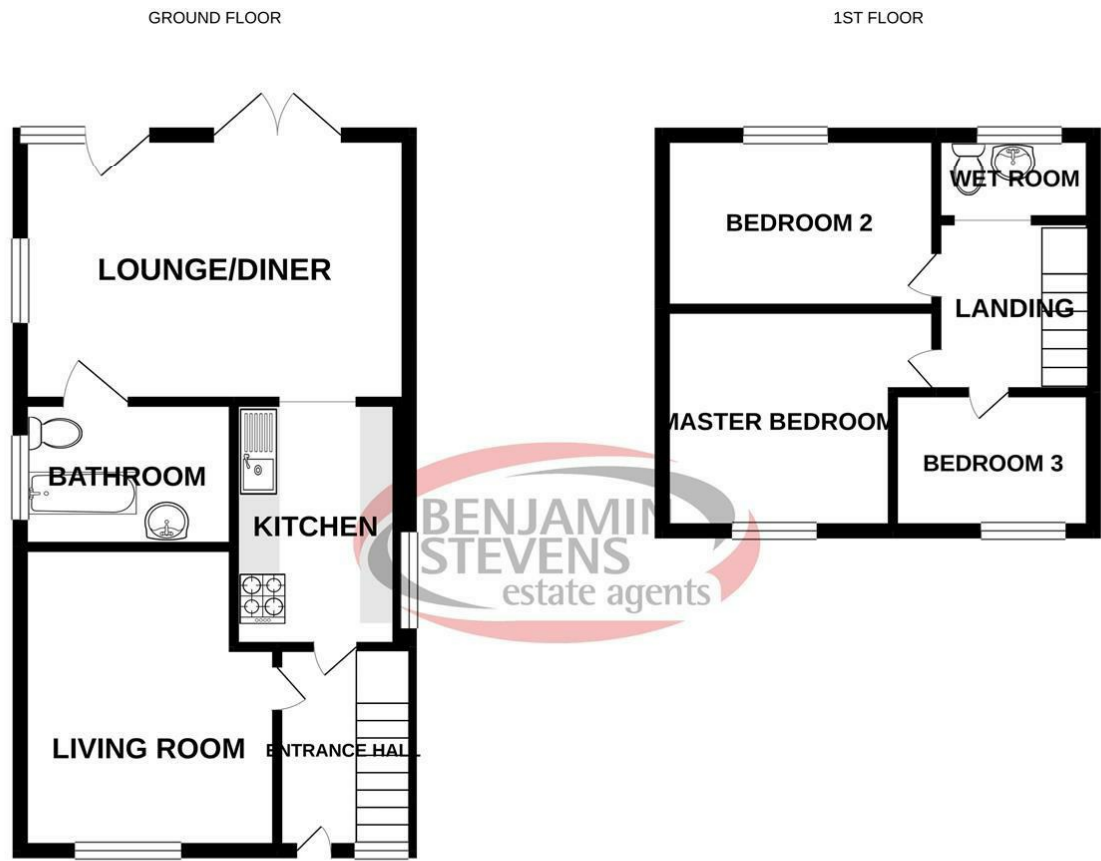
Bedroom 2

Bedroom 3

Living Room

Kitchen

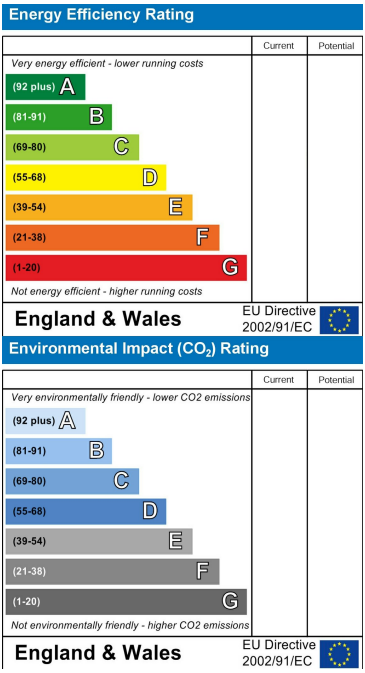
Floor Plan



Area Map



Energy Efficiency Graph



These particulars, whilst believed to be accurate are set out as a general outline only for guidance and do not constitute any part of an offer or contract. Intending purchasers should not rely on them as statements of representation of fact, but must satisfy themselves by inspection or otherwise as to their accuracy. No person in this firms employment has the authority to make or give any representation or warranty in respect of the property.

