

For Rent



People Make Places



Berwick Street, Soho W1

1 bedroom | 646 sq ft

£625 pw





A bright and spacious one bedroom apartment in the heart of Soho. The kitchen is open-plan to the living space but tucked away off one corner, while the modern bathroom has a shower over the bath. Secondary glazing is fitted throughout. Available immediately unfurnished.

What you need to know

- One bedroom
- One bathroom
- First floor
- Wood floors throughout
- Large open plan reception
- Unfurnished
- Secondary glazing
- Modern
- Available immediately
- Close to Oxford Circus and Tottenham Court Road tube



Berwick Street, Soho W1



Overview

This one-bedroom apartment is in the heart of Soho on Berwick Street famed for its music culture, bustling weekday food market and plethora of material shops. On the first floor, walk-up, of a period building, the apartment is spacious with an open-plan kitchen and living space, an L-shaped bedroom positioned at the back of the property for a quiet sleeping environment and a contemporary bathroom. Secondary glazing is fitted for tenant comfort.

Transport links are available at nearby Tottenham Court Road (Central, Northern and Elizabeth Lines) and Oxford Circus (Central, Bakerloo and Victoria Lines) Underground Stations. Soho Square is just a few streets away providing a tranquil green space to relax while several bus routes operate on nearby Oxford Street and Charing Cross Road.

The apartment is available immediately on an unfurnished basis. Subject to contract and satisfactory references, the landlord offers a one to three-year lease with a mutual rolling six-month break clause. Westminster Council tax band: D.



People Make Places

London is a collection of inspiring urban villages and one of the most exciting places in the world to live, work & play.

We work with both property owners and their occupiers, sharing the story of these vibrant neighbourhoods, conveying the unique soul & energy to future custodians, the people who'll keep them buzzing.

And unlike many real estate businesses we're not just about buildings, because streets & buildings don't make a neighbourhood.

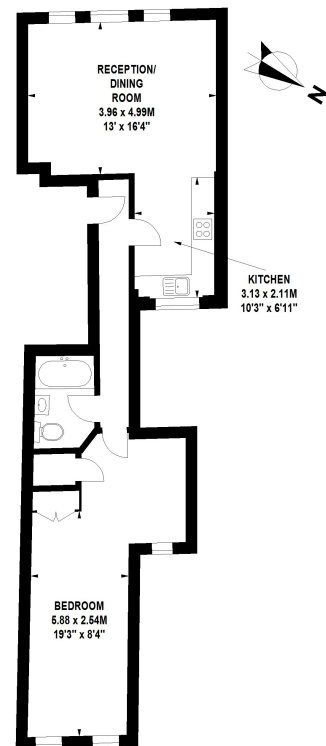
We're about building relationships, because **people make places**.

MISINTERPRETATION ACT (COPYRIGHT) DISCLAIMER: Tavistock Bow Ltd for themselves and for the vendor(s) of this property whose agents they are, given notice that: 1. These particulars do not constitute, nor constitute any part of, an offer or contract. 2. None of the statements contained in these particulars as to the property are to be relied on as statements or representations of fact. 3. Any intending purchaser or lessee must satisfy themselves by inspection or otherwise as to the correctness of each of the statements contained in these particulars. 4. The vendor(s) or lessor(s) do not make or give and neither Tavistock Bow Ltd nor any person in their employment has any authority to make or give any representation or warranty whatever in relation to this property. Finance Act 1989, Unless otherwise stated all prices and rents are quote exclusive of VAT. Property Misrepresentation Act 1991; These details are believed to be correct at the time of compilation but may be subject to subsequent amendment.

Follow us:     @tavistockbow

Score	Energy rating	Current	Potential
92+	A		
81-91	B		
69-80	C	76 C	80 C
55-68	D		
39-54	E		
21-38	F		
1-20	G		

Berwick Street, W1
Gross Internal Area 60 sq m / 646 sq ft



First Floor

Floor Plan produced for Tavistock Bow by Mays Floorplans © . Tel 020 3397 4594
Illustration for identification purposes only, not to scale
All measurements are maximum, and include wardrobes and window bays where applicable

tavistockbow

21 New Row, Covent Garden,
London, WC2N 4LE

t: 020 7477 2177
e: hello@tavistockbow.com
w: tavistockbow.com



Berwick Street, Soho W1