



**Lynton Road, Bermondsey**

Offers in Excess of £450,000 Leasehold

**OLIVER *OJ* JACQUES**  
EST. 1986



# Lynton Road, Bermondsey

Boasting an abundance of natural light, this south facing apartment enjoys floor to ceiling windows to all rooms, maximising the feel of space, which overlook the peaceful communal gardens below. The property forms part of a modern building from approx. 2010 and occupies a peaceful situation on a residential street with restricted vehicular access. Internally, the 700sqft briefly comprises two double bedrooms, an open plan kitchen / living area, spacious family bathroom and plenty of storage space. Located in fashionable SE1, Kite House is within walking distance of Rail, Jubilee Line and bus links and is moments from Cycle Quietway 1 offering cycle routes from Waterloo to Greenwich away from main roads.

- Two Double Bedrooms
- South Facing Aspect
- Second Floor Apartment
- Floor to Ceiling Windows
- Modern 10 Year Old Building
- Communal Gardens

South East London  
020 7231 5050

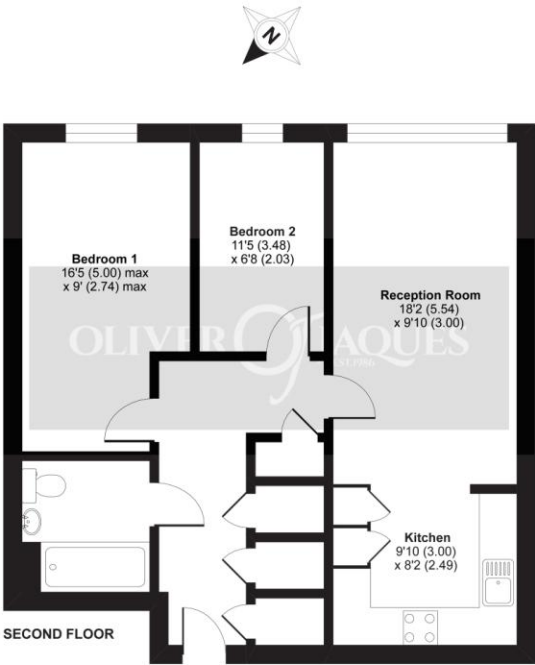
Email [southeast@o-j.co.uk](mailto:southeast@o-j.co.uk)

229-231 Lower Road, London, SE16 2LW

web [www.o-j.co.uk](http://www.o-j.co.uk)

Every care has been taken with the preparation of this brochure but it is for general guidance only and complete accuracy cannot be guaranteed. If there is any point, which is of importance professional verification should be sought. This brochure does not constitute a contract or part of a contract. We are not qualified to verify tenure of property. Prospective purchasers should seek clarification from their solicitor or verify the tenure of this property for themselves by visiting [www.landregisteronline.gov.uk](http://www.landregisteronline.gov.uk). The mention of any appliances, fixtures or fittings does not imply they are in full working order. Photographs are reproduced for general information and it cannot be inferred that any item shown is included in the sale. All dimensions are approximate. Walking times are taken from Google Maps and measured from the centre of the postcode, which may differ slightly from the individual property.

Kite House, Lynton Road, London, SE1  
APPROX. GROSS INTERNAL FLOOR AREA 689 SQ FT 64 SQ METRES



Whilst every attempt has been made to ensure the accuracy of the floor plan contained here, measurements of doors, windows and rooms are approximate and no responsibility is taken for any error, omission or misstatement. These plans are for representation purposes only as defined by RICS Code of Measuring Practice and should be used as such by any prospective purchaser. Specifically no guarantee is given on the total square footage of the property if quoted on this plan. Any figure given is for initial guidance only and should not be relied on as a basis of valuation.

Copyright nichecom.co.uk 2020 Produced for Oliver Jaques REF : 584065

