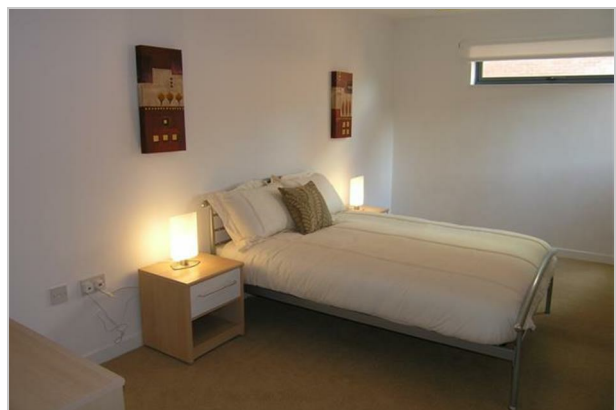
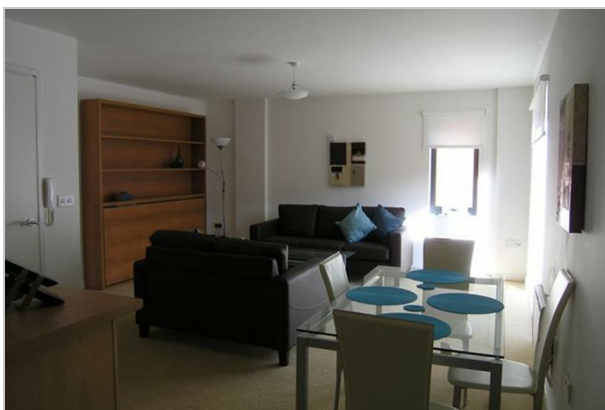




**LEWIS
WADSWORTH**
THE WISE MOVE

**16 The Chimes, Sheffield S1 2EH
£625 PCM**



16 The Chimes, Sheffield S1 2EH

FURNISHED A fully equipped luxury 1 bedroomed, FOURTH FLOOR thoughtfully designed apartment which is appointed to the highest of standards, set in this most desirable residential development in the Cathedral Quarter, offering contemporary living in the heart of the SHEFFIELD CITY CENTRE. Entrance hall, lounge with additional stow away guest bed, luxury kitchen with stainless steel appliances, LARGE DOUBLE BEDROOM and bathroom with shower. Electric heating, double glazing, security entry. Energy Rating C. AVAILABLE FROM 05/03/2020

Applicants will need to prove a minimum combined income of £18,750 per annum to pass the referencing affordability.

Important: Credit checks and references will be carried out on applicants 18 and over. If a guarantor is required, credit checks and references will also be carried out.

A deposit of £720 is required and will be protected.

NALS client money protection scheme: Licence No:A464

Property Redress Scheme: Membership No: PRS011958



Energy Efficiency Rating

	Current	Potential
Very energy efficient - lower running costs		
(92 plus) A		
(81-91) B	80	85
(69-80) C		
(55-68) D		
(39-54) E		
(21-38) F		
(1-20) G		
Not energy efficient - higher running costs		

England & Wales EU Directive 2002/91/EC



Environmental Impact (CO₂) Rating

	Current	Potential
Very environmentally friendly - lower CO ₂ emissions		
(92 plus) A		
(81-91) B	77	77
(69-80) C		
(55-68) D		
(39-54) E		
(21-38) F		
(1-20) G		
Not environmentally friendly - higher CO ₂ emissions		

England & Wales EU Directive 2002/91/EC

