



MILE

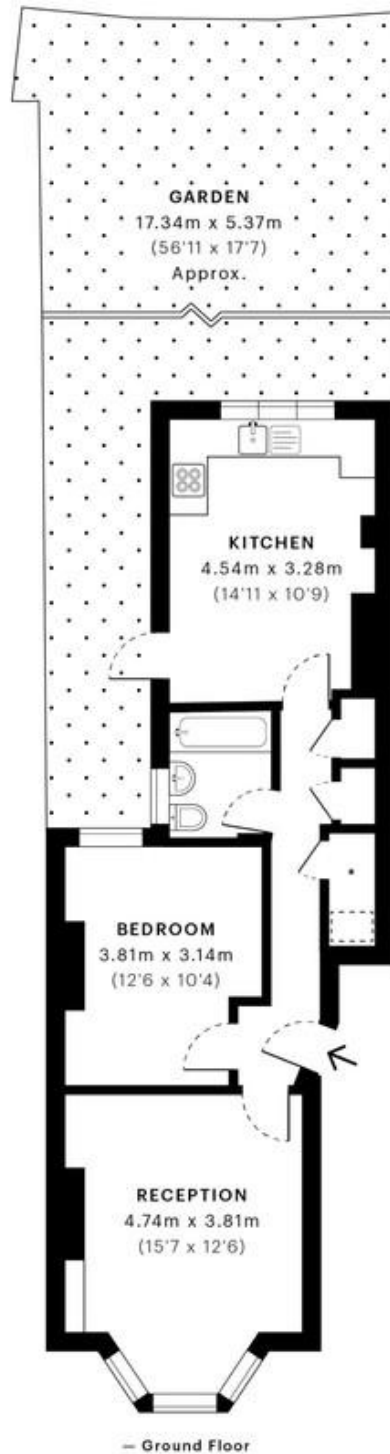


## Tubbs Road, NW10 Starting Bid £300,000 Leasehold

Welcome to Tubbs Road; a great garden apartment ready to be your blank canvas. Offered in excellent condition, this lovely home comprises of a great reception room with bay windows, a large double bedroom, a three piece family bathroom and an excellent fully fitted kitchen eat-in kitchen. There is access from the kitchen a great 35ft (approx.) south west facing garden, ideal for entertaining. The property also benefits of double glazed windows throughout, wood flooring, high ceilings and an abundance of natural light and storage space. This great home has the possibility to be extended two ways (STPP) in order to offer plenty of living and entertaining space. It is also offered with a long lease.

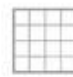
**Being Sold via Secure Sale online bidding. Terms & Conditions apply. Starting Bid £300,000**

- Ground floor apartment
- Double bedroom
- Amazing 35ft south west garden
- Chain free
- 88 year lease
- Potential to extend (STPP)
- Excellent condition
- Fantastic location
- Bright and airy
- Close to shops and transport



 **GROSS INTERNAL AREA (GIA)**  
The footprint of the property  
53.83 sqm / 579.42 sqft

 **NET INTERNAL AREA (NIA)**  
Excludes walls and external features  
Includes washrooms, restricted head height  
50.19 sqm / 540.24 sqft

 **EXTERNAL STRUCTURAL FEATURES**  
Balconies, terraces, verandas etc.  
0.00 sqm / 0.00 sqft

 **RESTRICTED HEAD HEIGHT**  
Limited use area under 1.5 m  
0.00 sqm / 0.00 sqft