

Beckhampton Street, Swindon,
Wiltshire, SN1 2JY

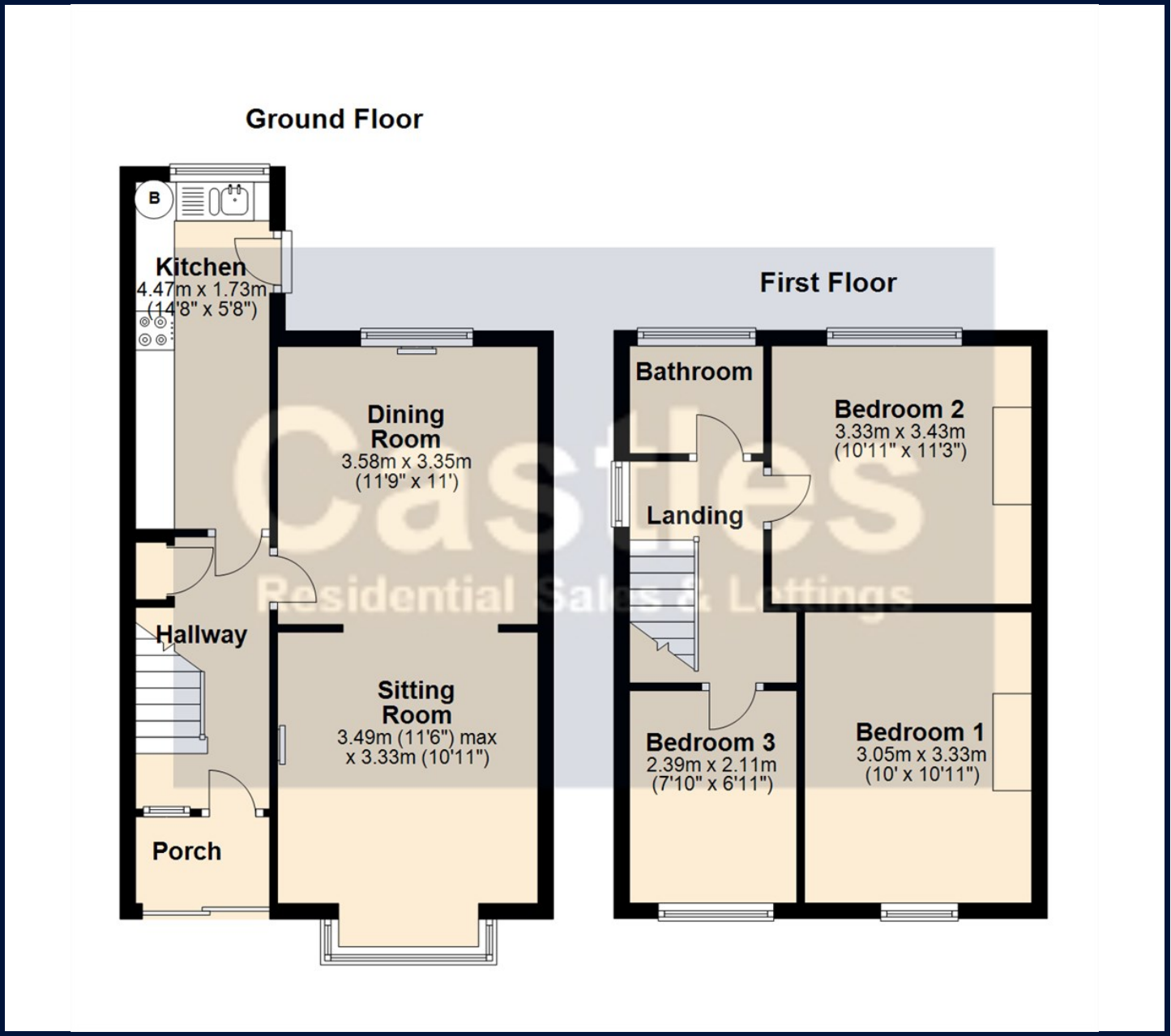
AVAILABLE LATE FEBRUARY

Spacious and well presented family home located in the York Road area of the town centre, ideally situated for several local schools and a wealth of local amenities.

The accommodation comprises entrance porch, entrance hall, open plan sitting/dining room and kitchen to the ground floor. On the first floor can be found the three bedrooms and family bathroom.

The property also benefits from double glazing, gas central heating and enclosed rear garden.

- Available Late February
- Entrance Porch, Entrance Hall
- Sitting Room
- Dining Room
- Three Bedrooms
- Enclosed Rear Garden
- Spacious Accommodation
- Double Glazing, Gas Central Heating
- EPC Rating:



Energy Efficiency Rating		Current	Potential
Very energy efficient - lower running costs			
(92 plus) A			
(81-91) B			
(69-80) C			
(55-68) D			
(39-54) E			
(21-38) F			
(1-20) G			
Not energy efficient - higher running costs			
England & Wales		EU Directive 2002/91/EC	

Environmental Impact (CO ₂) Rating		Current	Potential
Very environmentally friendly - lower CO ₂ emissions			
(92 plus) A			
(81-91) B			
(69-80) C			
(55-68) D			
(39-54) E			
(21-38) F			
(1-20) G			
Not environmentally friendly - higher CO ₂ emissions			
England & Wales		EU Directive 2002/91/EC	



Council Tax Band: C

Viewing

For further information on this property or to arrange a viewing please contact Lettings on 01793 611677

These particulars, whilst believed to be accurate are set out as a general outline only for guidance and do not constitute any part of an offer or contract. Intending purchasers should not rely on them as statements of representation of fact, but must satisfy themselves by inspection or otherwise as to their accuracy. No person in this firms employment has the authority to make or give any representation or warranty in respect of the property.