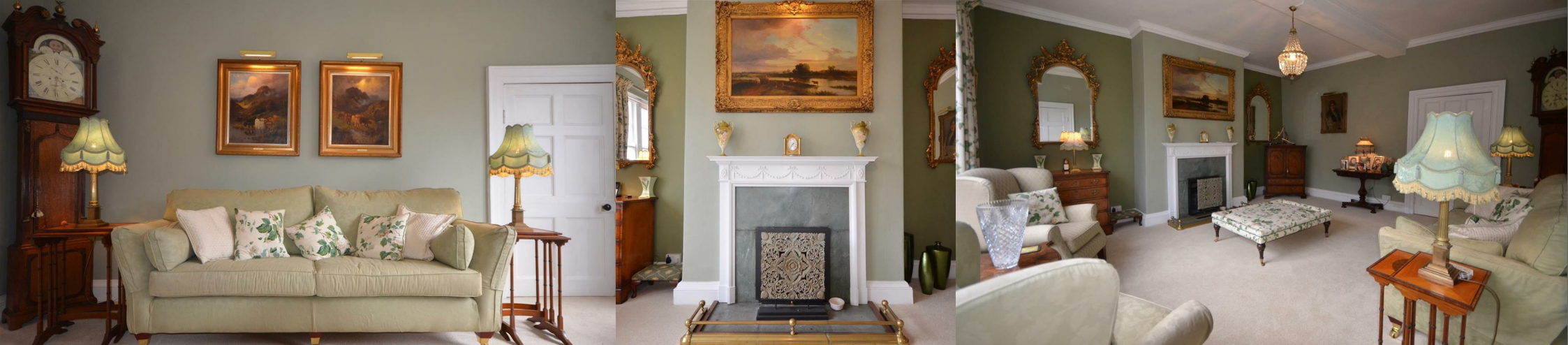




MILES ESTATE AGENTS

**Loxley , Norton Fitzwarren,
Taunton, TA2 6QW**



A substantial Grade II Listed detached period house, refurbished to an exceptional standard, offering 4 double bedrooms, 3 reception rooms, fabulous kitchen/breakfast room and lovely garden to the rear. Tandem double garage and off road parking - early viewing highly recommended.



Features:

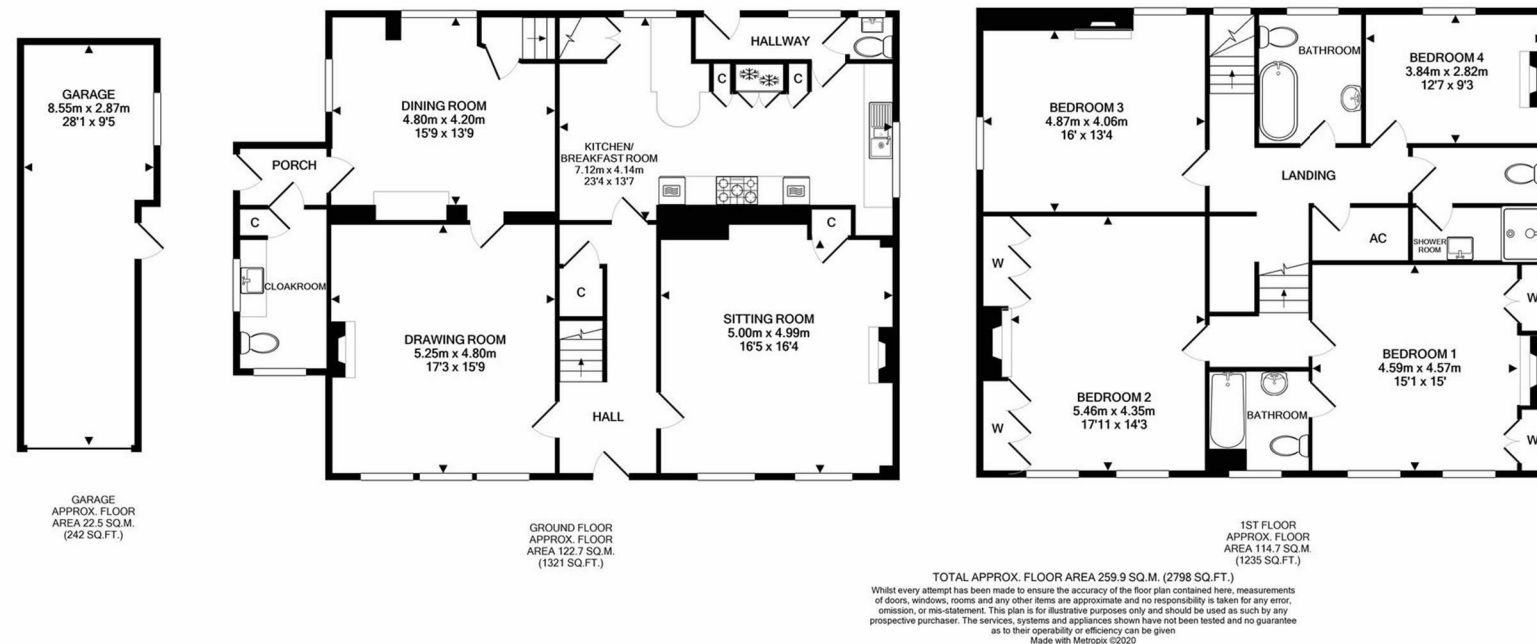
- Entrance Hall
- Spacious Sitting Room
- Lovely Drawing Room
- Dining Room
- Fabulous Refitted Kitchen/Breakfast Room with Gaggenäu Appliances
- Utility & Cloakroom
- 4 Generous Double Bedrooms
- En Suite Bathroom
- Superb Family Bathroom
- Shower Room & WC
- Good Size Gardens
- Tandem Double Garage & Off Road Parking
- Council Tax Band E
- No Onward Chain











Viewings strictly through the selling agents:

Miles Estate Agents

2 Piffin Lane, Bishops Lydeard, Taunton,
Somerset, TA4 3AS

Tel: 01823 470 500

lydeard@milesestateagents.co.uk

www.milesestateagents.co.uk

rightmove

Zoopla.co.uk

OnTheMarket.com

MILES ESTATE AGENTS



