



Split Level One Bedroom Apartment on Wide Tree-Lined Street

Dartmouth Road, Kilburn, NW2

Available 1 December - £475 per week* (£2,058 PCM)

*Additional fees may apply

Dartmouth Road, Kilburn, NW2

£475 per week* (£2,058 PCM)

*Additional fees may apply

- Reception room with feature fireplace
- Fully fitted eat-in kitchen
- Double bedroom with built in storage
- Family bathroom
- Use of Attic
- Mains water/sewerage/electric/gas
- Gas central heating

A bright and spacious second floor split level apartment. The property benefits from a sunny reception room with feature fireplace, fully fitted eat in kitchen, double bedroom with fitted wardrobes, bathroom and large storage space in the attic. Situated on this popular wide tree-lined road within easy walking distance of good transport links via Kilburn and Willesden Green stations, as well as restaurants, cafes and shops of Kilburn.

- Available 1 December - Unfurnished
- Brent Council Tax Band: D £2,133.15 PA
- EPC Rating: 61/D
- Approx. Gross Internal Area: 805 Sq Ft
- Security Deposit: £2,375 (5 wks rent)
- Holding Deposit: £475 (1 wks rent)



Dartmouth Road, Kilburn, NW2

Available 1 December - £475 per week (£2,058 PCM)*

*Additional fees may apply



Split Level One Bedroom Apartment on Wide Tree-Lined Street

Dartmouth Road, Kilburn, NW2

Available 1 December - £475 per week* (£2,058 PCM)*

*Additional fees may apply



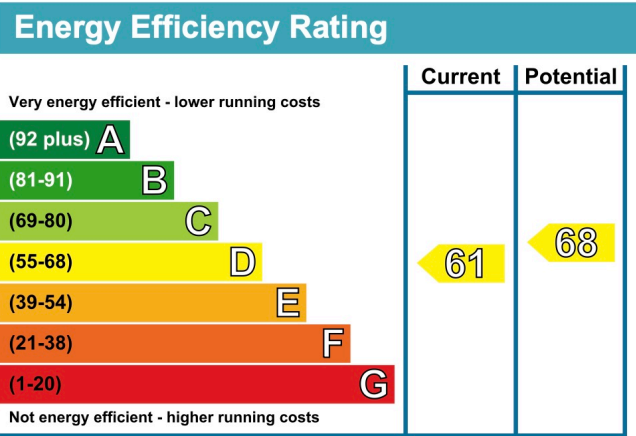
Split Level One Bedroom Apartment on Wide Tree-Lined Street

Dartmouth Road, Kilburn, NW2

Available 1 December - £475 per week* (£2,058 PCM)*

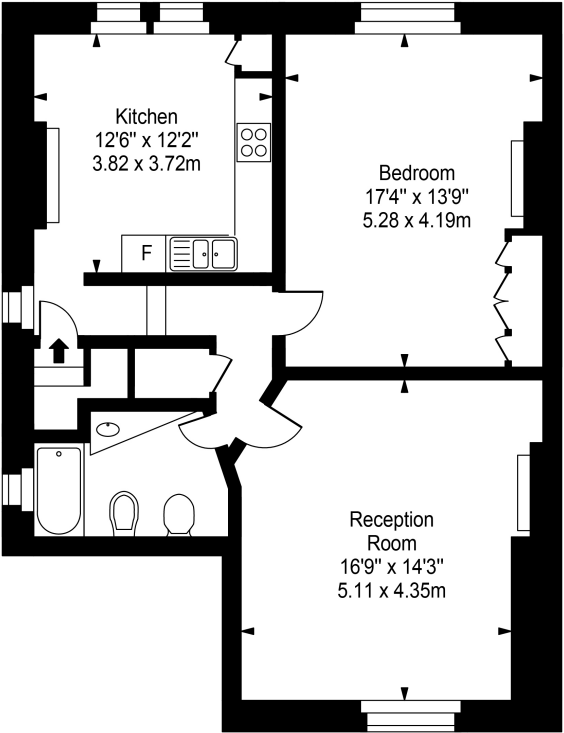
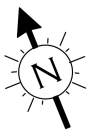
*Additional fees may apply

Approx Gross Internal Area: **805 Sq Ft / 74.80 Sq M**



* A holding deposit of 1 weeks rent will be offset against the initial rental payment. The necessary paperwork should be completed within 15 days or such longer period as might be agreed. A security deposit equivalent to 5 weeks rent to be held during the tenancy against unpaid rent, bills, dilapidations and any other costs or losses incurred. Contract variations £50, Change of sharer £50, all inclusive of VAT at the prevailing rate.

Dartmouth Road, NW2



Second Floor

Approx Gross Internal Area **805 Sq Ft - 74.80 Sq M**

For Illustration Purposes Only - Not To Scale
Floor plan by www.creativeplanetitk.com

Please note that the above measurements are approximate only. Any internal photographs are intended as a guide only and it should not be assumed that any of the furniture is included