



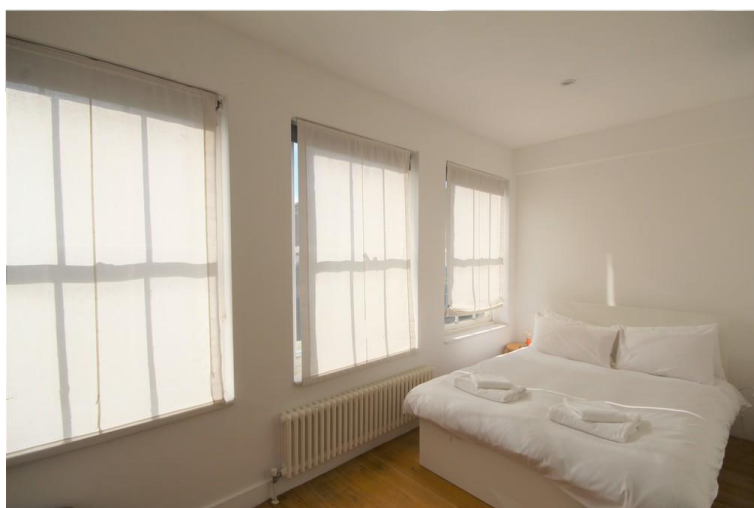
**Peach** properties

**Wadeson Street, Bethnal Green, E2**

- Victorian Conversion
- 1st Floor Apartment
- Solid Wooden Floors
- Stylish Shower Suite

**£1,500 pcm**  
EPC Rating 'TBC'





## Property Description

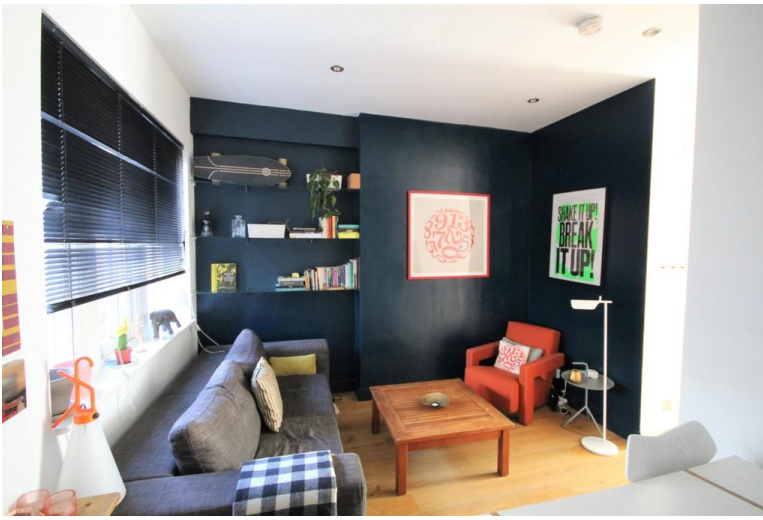
Set within a Victorian conversion just a road away from Regents Canal and the wide open spaces of Victoria Park is this tidy one bedroom apartment.

Comprising of a bright reception room with wooden flooring and fitted shelving, partly separate modern kitchen with integrated appliances, three piece bathroom suite and exceptionally light in bedroom.

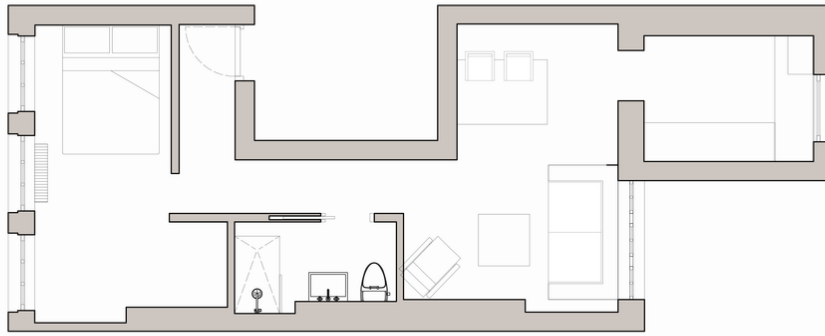
Just a short walk to London Fields and the fashionable Broadway Market with its array of boutique shops, bars and restaurants.

Transport connections include, Cambridge Heath Station (National Rail) and Bethnal Green tube (Central Line) making easy links into the City and West End.

Available Now! and offered furnished.



PLANS - WADESON STREET SCALE 1/10 DATE: 27.09.2018



%epcGraph\_c\_1\_353%

53 Bethnal Green Road  
Shoreditch  
London  
E1 6LA

[www.peachproperties.com](http://www.peachproperties.com)  
[info@peachproperties.com](mailto:info@peachproperties.com)  
0207 739 6969

Important Notice 1. Particulars: These particulars are not an offer or contract, nor part of one. You should not rely on statements by Peach Properties (UK) Ltd in the particulars or by word of mouth or in writing ("information") as being factually accurate about the property, its condition or its value. Neither Peach Properties (UK) Ltd nor any joint agent has any authority to make any representations about the property, and accordingly any information given is entirely without responsibility on the part of the agents, seller(s) or lessor(s). 2. Photos etc: The photographs show only certain parts of the property as they appeared at the time they were taken. Areas, measurements and distances given are approximate only. 3. Regulations etc: Any reference to alterations to, or use of, any part of the property does not mean that any necessary planning, building regulations or other consent has been obtained. A buyer or lessee must find out by inspection or in other ways that these matters have been properly dealt with and that all information is correct. 4. VAT: The VAT position relating to the property may change without notice. Particulars dated April 2016 Photographs dated April 2016. Peach Properties (UK) Ltd, Registered in England and Wales, Company Registration No. 06755175, Registered office, 53 Bethnal Green Road, London, E1 6LA.