



MILES ESTATE AGENTS

**Wagon House Knapp Lane,
Eastcombe, Bishops Lydeard, TA4 3HT**



A superb extended 4 bedroom detached bungalow offering well presented and flexible accommodation set in gardens of around 1/3 acre with views, just outside ever popular Bishops Lydeard. Annexe potential, garage and lots of off road parking - early viewing highly recommended.





Features:

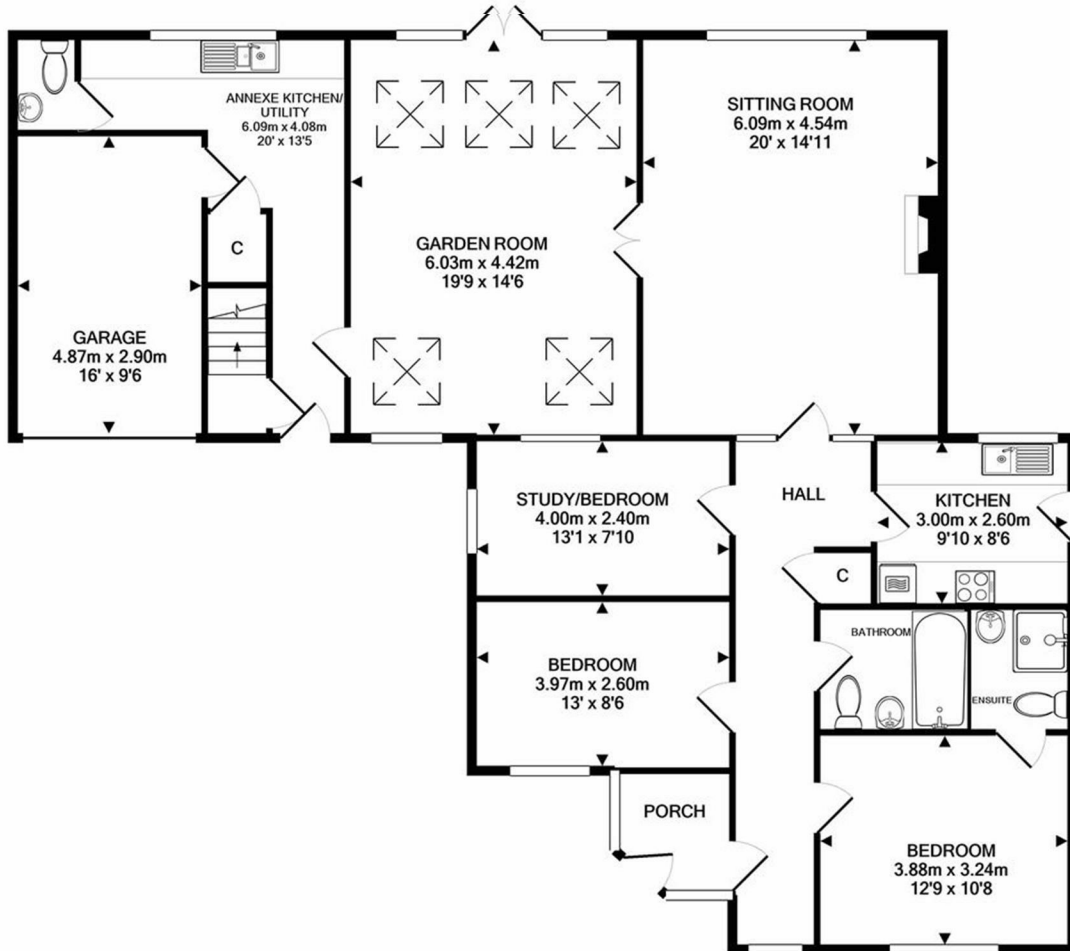
- Entrance Porch
- Hall
- Spacious Sitting Room with Woodburning Stove
- Fabulous Garden Room With Lovely Views & Vaulted Ceiling
- Modern Kitchen
- Utility Room
- 3 Good Size Bedrooms (Master En Suite)
- Family Bathroom
- Annexe Potential with Generous First Floor Double Bedroom & En Suite
- Integral Garage - Easily Converted
- Lovely 1/3 Acre Gardens with Orchard & Workshops
- Off Road Parking for Several Cars
- Council Tax Band E



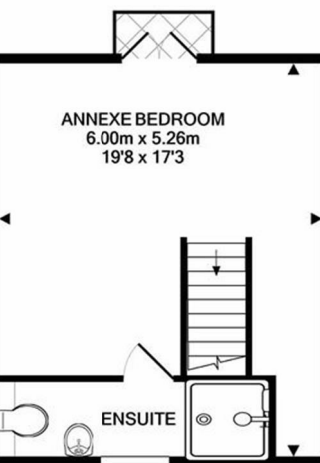








GROUND FLOOR
APPROX. FLOOR
AREA 148.3 SQ.M.
(1596 SQ.FT.)

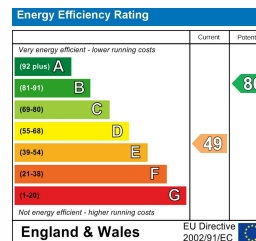


1ST FLOOR
APPROX. FLOOR
AREA 30.7 SQ.M.
(330 SQ.FT.)

TOTAL APPROX. FLOOR AREA 179.0 SQ.M. (1926 SQ.FT.)

Whilst every attempt has been made to ensure the accuracy of the floor plan contained here, measurements of doors, windows, rooms and any other items are approximate and no responsibility is taken for any error, omission, or mis-statement. This plan is for illustrative purposes only and should be used as such by any prospective purchaser. The services, systems and appliances shown have not been tested and no guarantee as to their operability or efficiency can be given

Made with Metropix ©2020



Viewings strictly through the selling agents:

Miles Estate Agents

2 Piffin Lane, Bishops Lydeard, Taunton,
Somerset, TA4 3AS

Tel: 01823 470 500

lydeard@milesestateagents.co.uk

www.milesestateagents.co.uk

rightmove

Zoopla.co.uk

OnTheMarket.com



BEST

ESTATE AGENT GUIDE
2019 : EXCEPTIONAL

SALES

MILES ESTATE AGENTS

