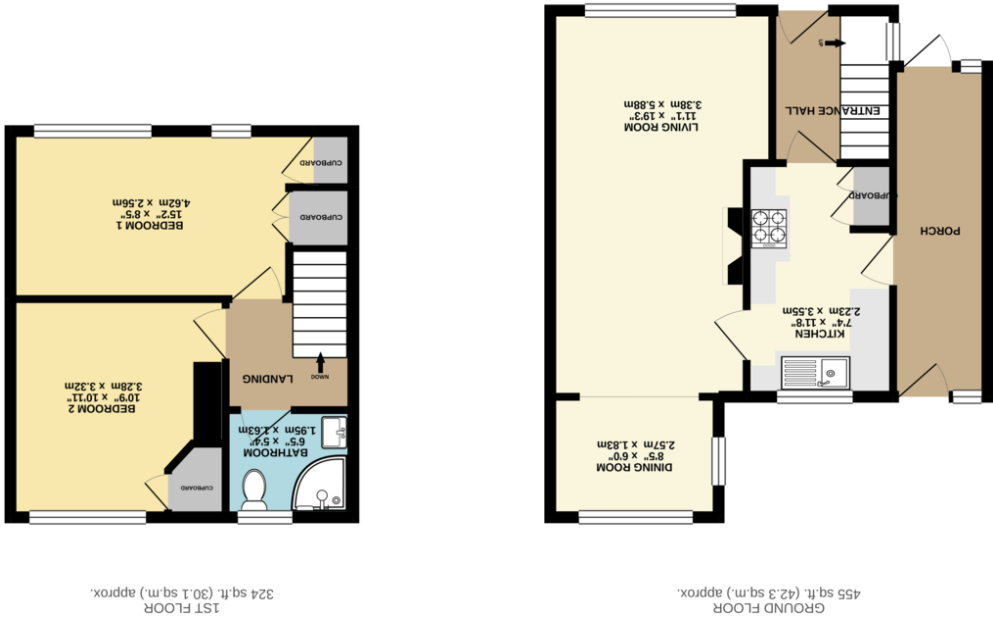




10 Saville Road, Whiston, Rotherham, South Yorkshire, S60 4DU



While every attempt has been made to ensure the accuracy of the floorplan contained herein, measurements of doors, windows, rooms and other items are approximate and no responsibility is taken for any omission or mis-statement. This plan is for illustrative purposes only and should be used as such by any prospective purchaser. The services, systems and appliances shown have not been tested and no guarantee as to their operation or efficiency can be given.

Made with Mapbox v2.0.0

10 Saville Road, Whiston, S60 4DU

Offered with NO UPWARD CHAIN & truly worthy of an early internal inspection is this extremely well presented TWO BEDROOM SEMI DETACHED, double glazed & gas central heating with enviable long lawned garden to the rear. Our vendors have modernised the property throughout making it a very cosy house to call your Home! The kitchen is fitted with cashmere gloss finished units together with integrated electrical appliances & complimented by GRANITE WORKTOPS. The front facing living room has a beautiful remote controlled feature fire which is set within the Portuguese limestone surround & a granite hearth & to the rear elevation overlooking the large garden is a SEPARATE DINING AREA. A side porch/conservatory gives access to both the front & rear. To the 1st floor are TWO DOUBLE BEDROOMS & the modern shower room fitted with white suite & complimentary tiling to the walls & floor. A front driveway provides off road parking in turn leading to the DETACHED GARAGE. Close to Schools, M1 & Sheffield Parkway



- An extremely well presented 2 bedroom semi detached house
- Gorgeous fitted kitchen with Granite worktops
- Stunning fireplace to Lounge with Portuguese Limestone surround
- Separate raised dining area
- 2 double bedrooms
- Attractive, modern shower room with tiled walls & floor
- Spacious driveway & single garage
- Long rear enclosed lawned garden
- Fantastic opportunity for the 1st time buyers
- Early internal viewing highly recommended

