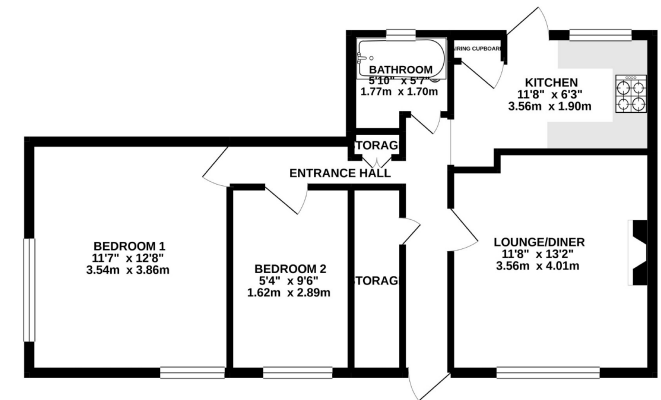




GROUND FLOOR  
587 sq.ft. (54.5 sq.m.) approx.



TOTAL FLOOR AREA: 587 sq.ft. (54.5 sq.m.) approx.  
While every attempt has been made to ensure the accuracy of the floorplan contained here, measurements of floors, walls, rooms and other areas are approximate and do not constitute a guarantee of any area or dimensions of the premises. The services, systems and appliances shown here have not been tested and no guarantee as to their operation or efficiency can be given.  
Made with Metaphor 10/20



Canterbury Road, Morden, SM4 6QW

TURNERS



Canterbury Road, Morden, SM4 6QW  
£355,000

TURNERS



## DESCRIPTION:

OPEN HOUSE ON SATURDAY THE 21ST OF MARCH BETWEEN 12:30 - 13:30 PLEASE CALL OR EMAIL TO ARRANGE YOUR SLOT.

Perfect for first time buyers, a charming, two-bedroom maisonette on Canterbury Road. The property is within walking distance of Morden Underground Station.

With its painted frontage and picket fence, this property welcomes visitors

## PRIME FEATURES:

- Very good condition
- Kitchen has been newly refurbished in 2019.
- Larger wrap around garden with garden storage
- 2 Bedrooms
- Maisonette
- Close to Morden Town centre
- Gas Central Heating
- Double glazing

**By Appointment Only**  
**Please Contact:**

Turners 105 London Road Morden Surrey SM4 5HP  
Tel 020 8687 9787 Fax 0208 685 0911  
Email [info@turnersproperty.com](mailto:info@turnersproperty.com) [www.turnersproperty.com](http://www.turnersproperty.com)



- SALES
- LETTINGS
- FINANCIAL SERVICES