



18 Old Oak Common Lane,
Acton
London
W3 7EL
T: 020 8749 9798
E: acton@churchillestates.co.uk
www.churchillestates.co.uk



Beechwood Grove, London, W3 7HY
Asking Price £425,000 Leasehold

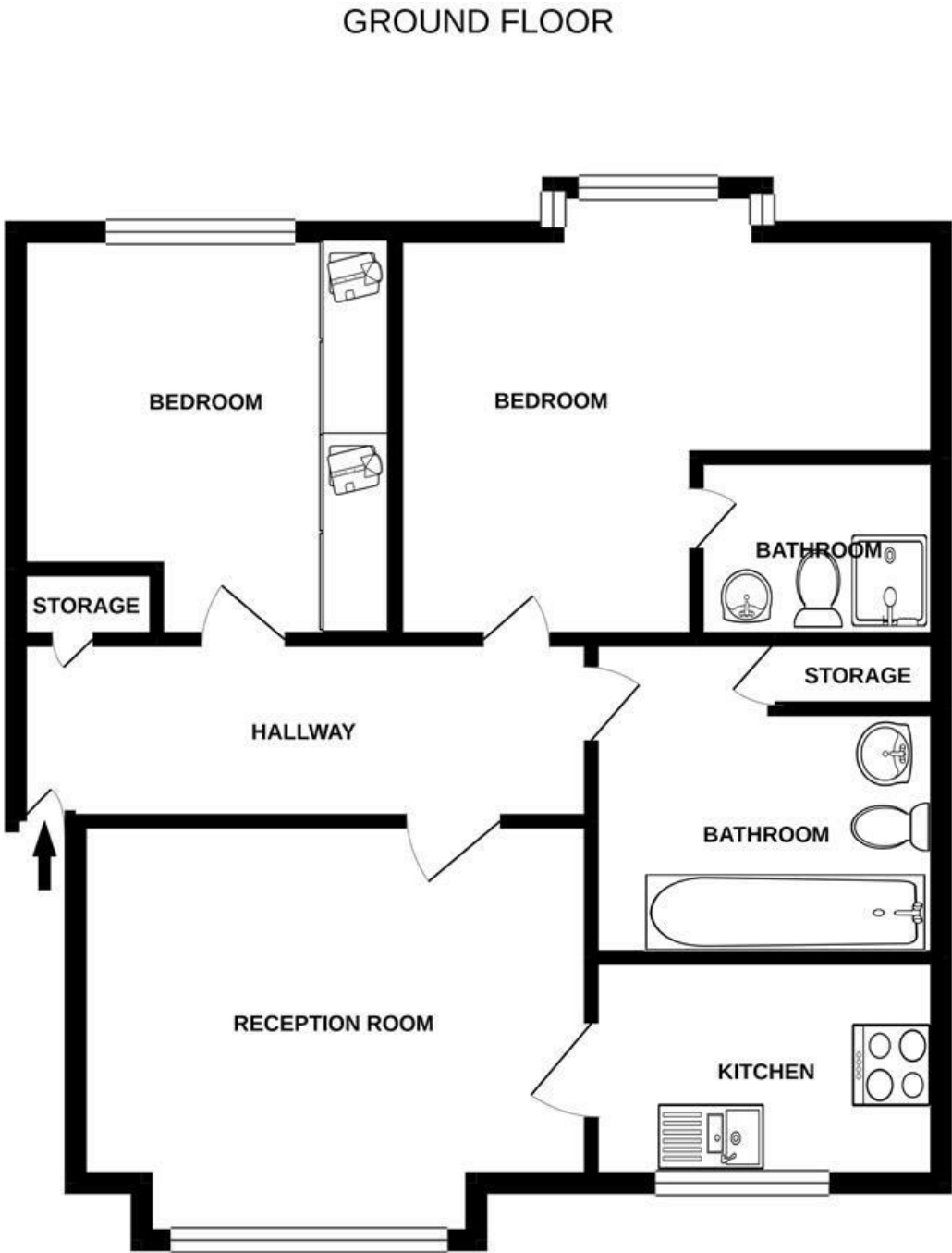


KEY FEATURES:

- TWO BEDROOM / TWO BATHROOMS
- SECOND FLOOR FLAT
- PURPOSE BUILT BLOCK
- SOUGHT AFTER LOCATION
- SPACIOUS RECEPTION ROOM
- DOUBLE GLAZING
- GAS CENTRAL HEATING
- ENTRYPHONE
- COMMUNAL GARDENS
- LONG LEASE

Lovely Location...TWO BEDROOM PURPOSE-BUILT SECOND FLOOR FLAT set within this very popular development at Beechwood Grove off East Acton Lane within easy reach to Acton Central Overground station with bus routes to Acton and the West End near by and the A40.

The property has TWO DOUBLE BEDROOMS, 18ft (5.50m) RECEPTION leading to a FITTED KITCHEN,, BATHROOM and En Suite SHOWER ROOM to MASTER BEDROOM. Features also include double glazing, gas central heating, entryphone, parking and LONG LEASE. An internal viewing is highly recommended to appreciate the spaciousness of this home.



Whilst every attempt has been made to ensure the accuracy of the floorplan contained here, measurements of doors, windows, rooms and any other items are approximate and no responsibility is taken for any error, omission or mis-statement. This plan is for illustrative purposes only and should be used as such by any prospective purchaser. The services, systems and appliances shown have not been tested and no guarantee as to their operability or efficiency can be given.
Made with Metropix ©2020

Whilst every effort is made to give a fair description, the accuracy of these particulars is not guaranteed, neither do they constitute an offer or contract.

CHURCHILL ESTATE AGENTS have not tested any apparatus, equipment, fitting or services and so cannot verify that they are in working order. The buyer is advised to obtain verification from their solicitor or surveyor. Measurements are correct to within +/- 6 A sonic tape is used. None of the statements contained in these particulars or any of our properties are to be relied upon as a representation of fact.