



43 Fitwell Road  
Swindon, SN25 2EZ

**STRAKERS**



43 Fitwell Road, Swindon, SN25 2EZ

**\*\*FOUR BEDROOMS\*\***Benefiting from a **FLEXIBLE LAYOUT** the property comprises a **SPACIOUS KITCHEN/BREAKFAST ROOM, TWO RECEPTION ROOMS, STUDY, TWO EN-SUITES**, over three floors. Externally there is a **REAR GARDEN & GARAGE** plus **ADDITIONAL CARPORT PARKING**.

- Four/Five Bedrooms
- Flexible layout
- Spacious kitchen / breakfast room
- Two reception rooms
- Study
- Two en-suites
- Garage
- Additional carport parking
- E.R.V. £1,100 pcm

£300,000



### Description

**\*\*FOUR/FIVE BEDROOMS\*\***Benefiting from a FLEXIBLE LAYOUT the property comprises a SPACIOUS KITCHEN/BREAKFAST ROOM, TWO RECEPTION ROOMS, STUDY, TWO EN-SUITES, over three floors. Externally there is a REAR GARDEN & GARAGE plus ADDITIONAL CARPORT PARKING to the front. Within walking distance of local schools, Redhouse Village Centre & Orbital Shopping Centre. E.R.V. £1,100 pcm

### Situation

Redhouse is a modern purpose built residential location, located on the North outskirts of Swindon with its own local amenities including retail park and reputable schooling. There is excellent access to both Junction 15 and 16 of the M4 Motorway, A417, A419, A420 & the Great Western Hospital and Swindon Town Centre c.4 miles with mainline railway links to London Paddington and Bristol.

### Property Information

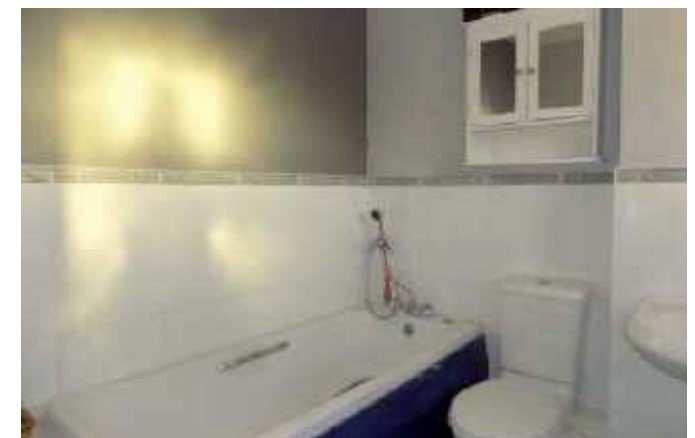
Tenure : Freehold

Council Tax Band : D

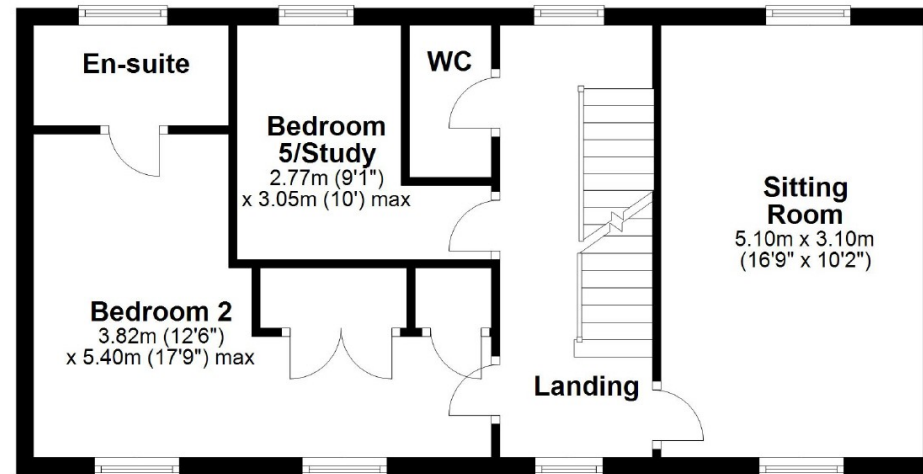
EPC : T.B.C

Gas Central Heating

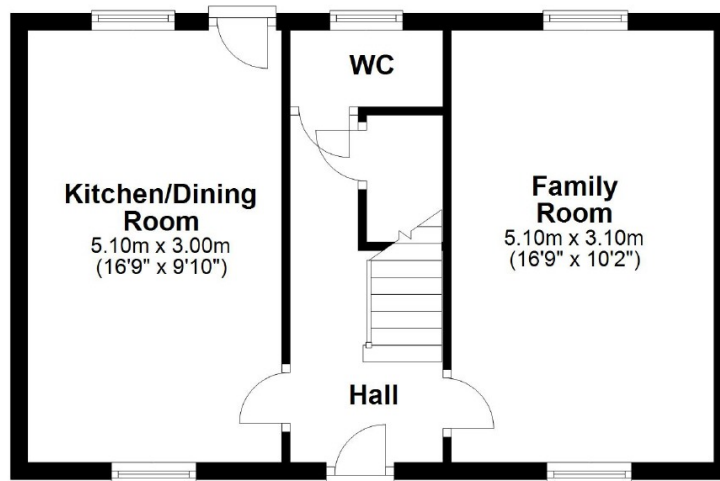
ERV : £1000 pcm



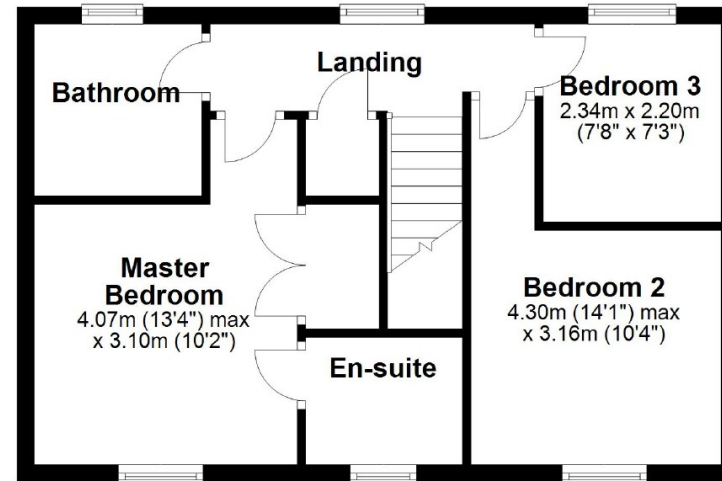
### First Floor



### Ground Floor



### Second Floor



Unit B, Millgrove House, 59 Millgrove Street, Redhouse, Swindon,  
Wiltshire, SN25 2FW  
Tel: 01793 683144  
Fax:

[www.strakers.co.uk](http://www.strakers.co.uk)

■ Chippenham  
■ Corsham

■ New Homes  
■ Malmesbury

■ Swindon  
■ Devizes

■ Auction  
■ Lettings