





# Flat 2 Hinesite

Alresford | Hampshire | SO24 9AT  
Asking Price Of £195,000

- One Bedroom Apartment
- Town Centre Location
- Kitchen
- Shower Room
- Own front door
- No Onward Chain

A one bedroom ground floor apartment conveniently situated within a courtyard in the town centre. The property benefits from its own front door, lounge/diner, kitchen, shower room and WC, and a door to the rear.

Offered to the market with no onward chain.

Alresford is a beautiful Georgian town known for its variety of independent shops, restaurants and inns located in stunning surroundings on the edge of the South Downs National Park. Attractions include the Watercress steam railway, schools for infant, junior and secondary education, several churches and an active and inclusive community. The cathedral city of Winchester is about 7 miles away and there is easy access to the south coast, the midlands and London via the road network. There is also mainline rail access to London from both Winchester and Alton. Southampton airport is only about half an hour away by car.

GROUND FLOOR ONE BEDROOM

ENTRANCE HALL Own front glazed door, window

LOUNGE/DINER 18' 9" x 13' 9" (5.72m x 4.19m) Max into



chimney recess Brick fireplace, airing cupboard, radiator, glazed door to rear, door to: kitchen and bedroom,

BEDROOM 14' 9" x 8' 6" (4.5m x 2.59m) excluding wardrobe depth Window to side and rear, two double wardrobes

KITCHEN 5' 8" x 5' 3" (1.73m x 1.6m) Incorporating eye and floor level units with round edged work surfaces and inset single drainer stainless steel sink unit, built in Electrolux oven and hob, extractor fan

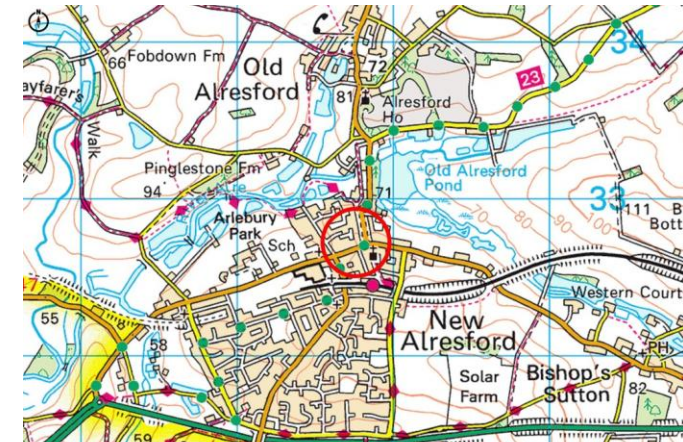
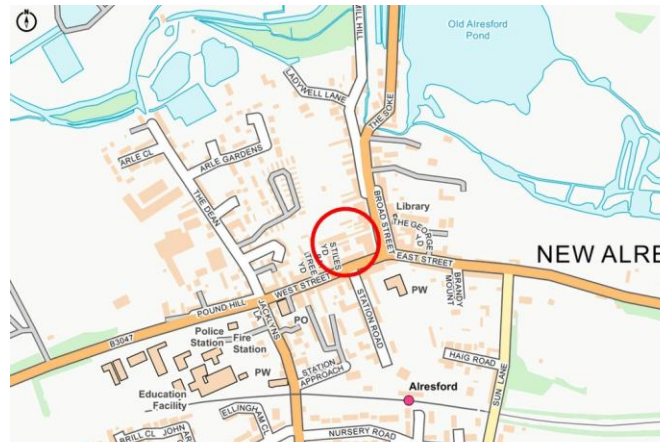
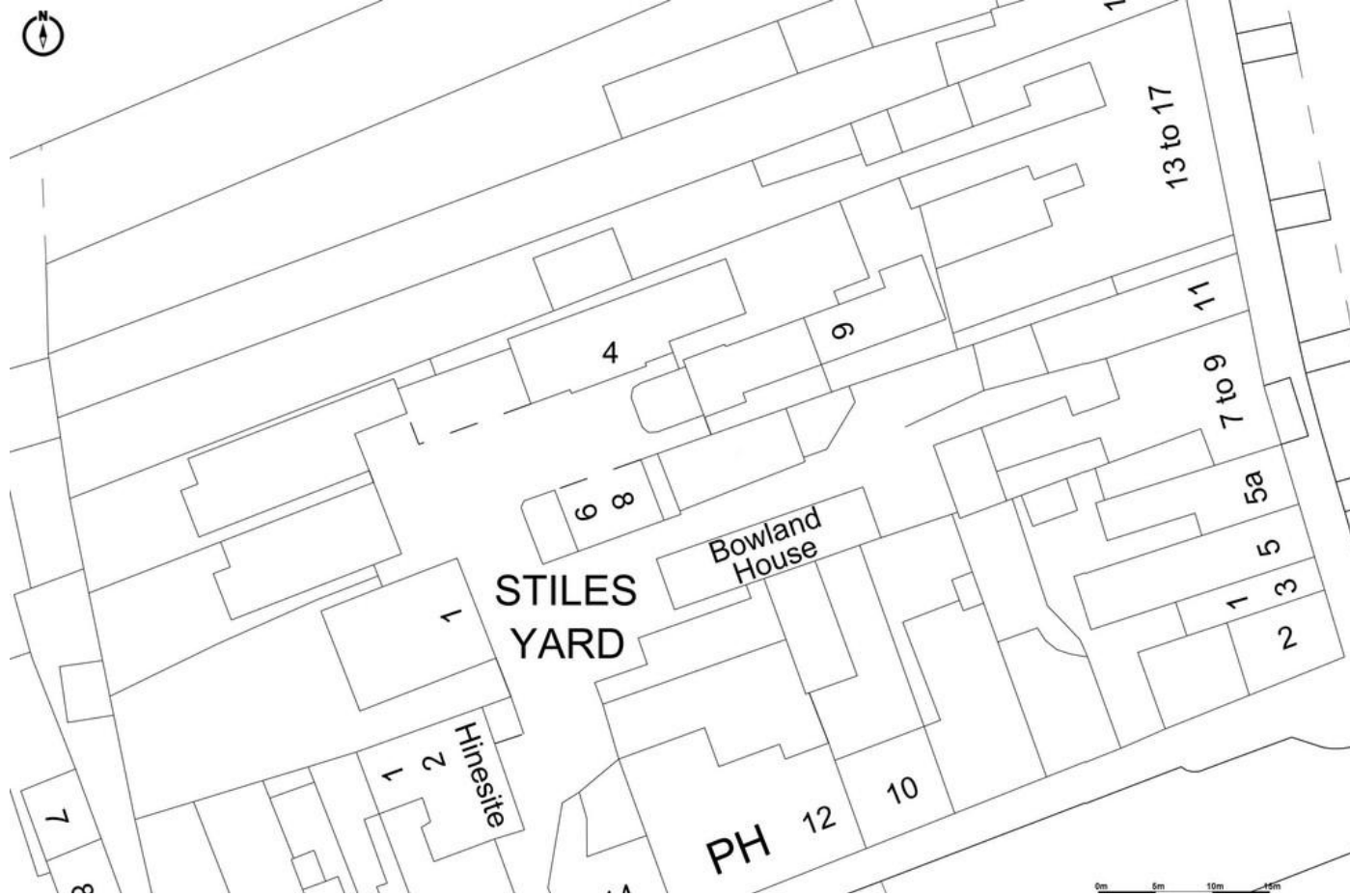
SHOWER ROOM Shower cubicle, radiator

WC WC, wash hand basin

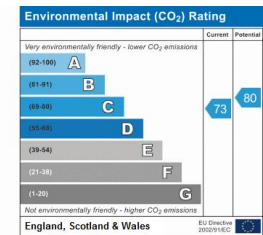
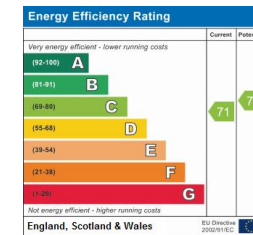
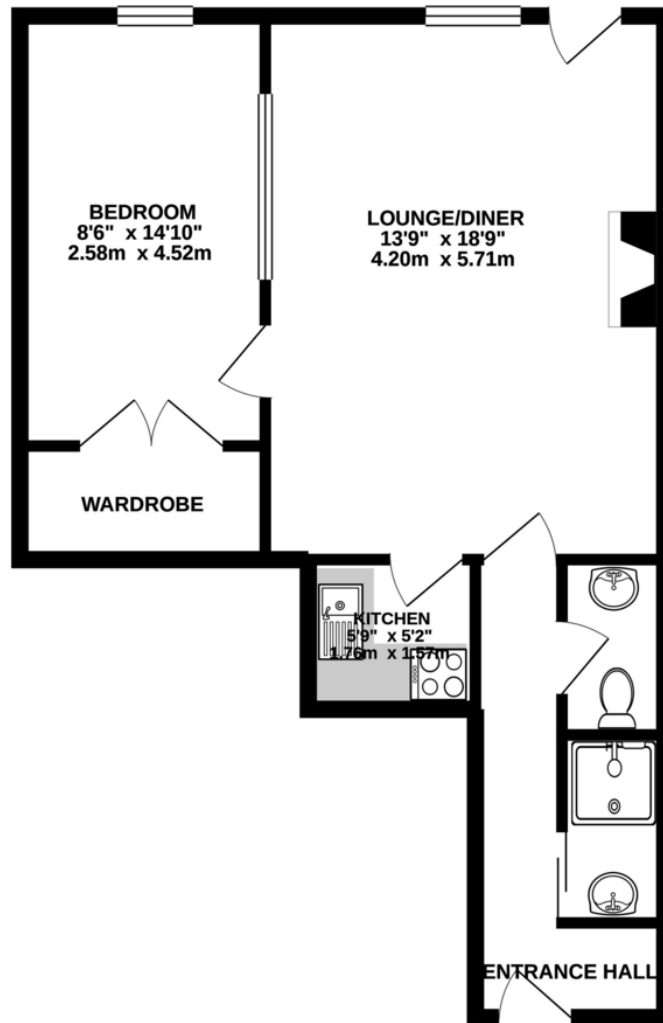
SERVICES We understand that all mains services are connected.

LOCAL AUTHORITY INFORMATION Winchester City Council Council Tax Band: A

LOCATION Alresford is a beautiful Georgian town known for its variety of independent shops, restaurants and inns located in stunning surroundings on the edge of the South Downs National Park. Attractions include the Watercress steam railway, schools for infant, junior and secondary education, several churches and an active and inclusive community. The cathedral city of Winchester is about 7 miles away and there is easy access to the south coast, the midlands and London via the road network. There is also mainline rail access to London from both Winchester and Alton. Southampton airport is only about half an hour away by car.



GROUND FLOOR



DIRECTIONS Stiles yard will be found on West Street, in the Centre of Town. It is located between Wild Bunch Florists and Susie Watson furnishings. It is suggested to park on West Street and go on foot into Stiles Yard, where the property will be found on the left hand side.

Whilst every attempt has been made to ensure the accuracy of the floorplan contained here, measurements