



MILES ESTATE AGENTS

3 Hovelands Court Trull Road
Taunton TA1 4QJ



A superb 2nd floor apartment offering spacious and well presented 2 double bedroom accommodation and private balcony with tremendous views across Taunton to the Quantock Hills. Stairlift access, kitchen/breakfast room, garage and communal gardens. Early viewing recommended and no onward chain.

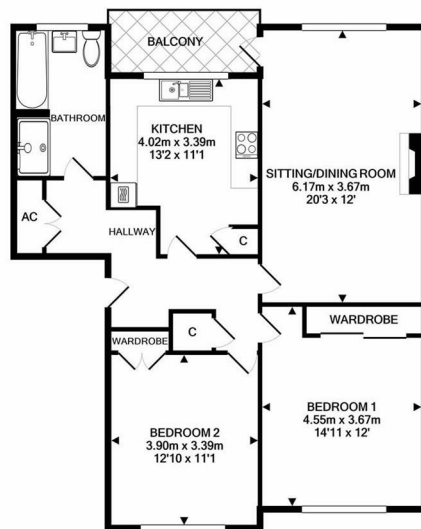




Features:

- Entrance Hall
- Spacious Sitting Room
- Good Size Kitchen/Breakfast Room
- 2 Generous Double Bedrooms
- Bathroom with Separate Shower
- Private Balcony with Fantastic Views
- Stairlift Access
- Communal Gardens
- Garage with Power & Light
- Leasehold for 999 Years from 27/08/70
- Service Charge £75 pcm
- Council Tax Band C
- No Onward Chain





TOTAL APPROX. FLOOR AREA 84.0 SQ.M. (904 SQ.FT.)

Whilst every attempt has been made to ensure the accuracy of the floor plan contained here, measurements of doors, windows, rooms and any other items are approximate and no responsibility is taken for any error, omission, or mis-statement. This plan is for illustrative purposes only and should be used as such by any prospective purchaser. The services, systems and appliances shown have not been tested and no guarantee as to their operability or efficiency can be given

Made with Metropix ©2020

Energy Efficiency Rating		
	Current	Potential
Very energy efficient - lower running costs		
(92 plus) A		
(81-91) B		
(69-80) C		
(55-68) D	61	73
(39-54) E		
(21-38) F		
(1-20) G		
Not energy efficient - higher running costs		
England & Wales	EU Directive 2002/91/EC	



Viewings strictly through the selling agents:

Miles Estate Agents

2 Piffin Lane, Bishops Lydeard, Taunton,
Somerset, TA4 3AS

Tel: 01823 470 500

lydeard@milesestateagents.co.uk

www.milesestateagents.co.uk

rightmove 

Zoopla.co.uk

onTheMarket.com

MILES ESTATE AGENTS

