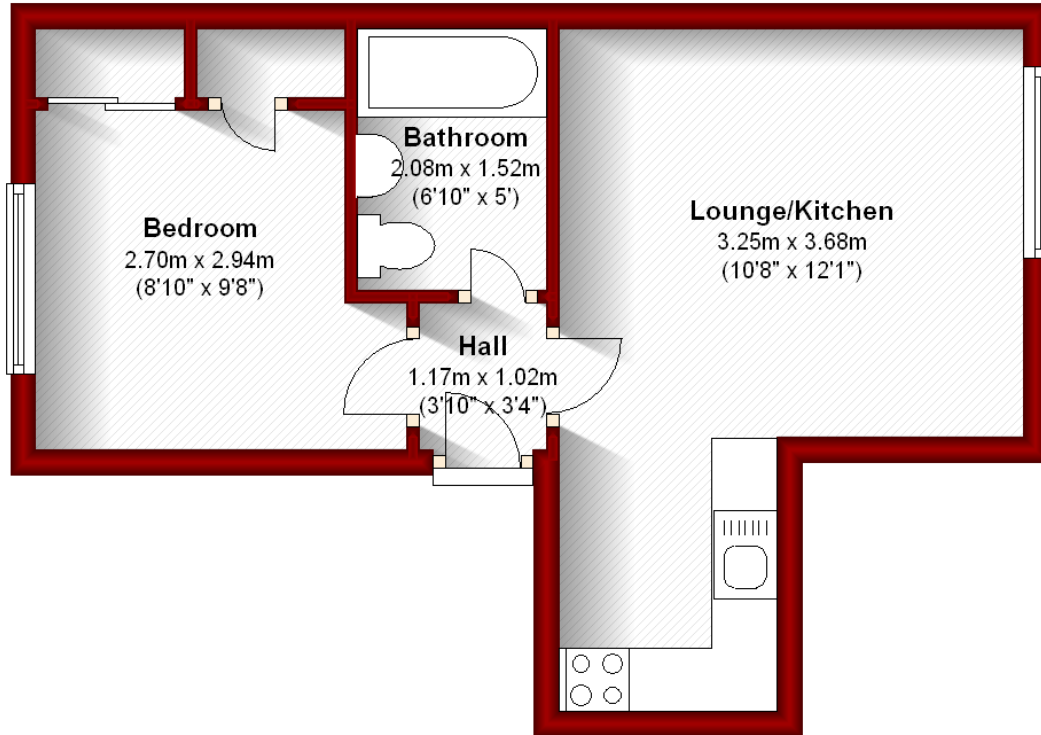


**484 George Street
Top Left
Aberdeen**

Ground Floor

Approx. 28.6 sq. metres (307.5 sq. feet)



Total area: approx. 28.6 sq. metres (307.5 sq. feet)

The above particulars are for guidance only, no liability for any errors or omissions will be accepted by Aberdeen Property Leasing Ltd.