



Duke Street, Mayfair, W1K

£1,350 Per Week

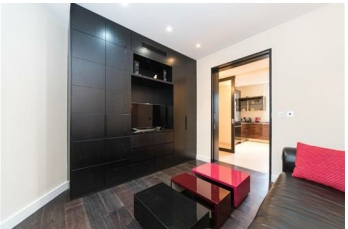
A stunning three bedroom apartment situated on the top floor with lift access in the heart of Mayfair & Marylebone.

The property comprises a bright reception room with a separate dining room, modern fully fitted kitchen, three double bedrooms, a stylish bathroom and separate WC.

In the heart of Mayfair, close to Selfridges, Bond Street, Oxford Street and Hyde Park underground stations are near by with the many local shopping and dining amenities in the area.

Transport links include Bond Street station (Central and Jubilee lines) & Oxford Circus station (Bakerloo, Victoria and Central lines) & Marble Arch station (Central line).

- Split level flat
 - Conference room / Dining room
 - Stylish bathroom
 - Fantastic location
- Bright reception
 - Two double bedrooms
 - Extra WC
- Separate modern kitchen
 - Extra room upstairs which can be bedroom / study room
 - Wood floors throughout



Energy Efficiency Rating			Environmental Impact (CO ₂) Rating		
Low energy efficient - lower running costs	Current	Potential	Very environmentally friendly - lower CO ₂ emissions	Current	Potential
	A			A	
England & Wales			England & Wales		