

192 Monton Road, Monton, Manchester, M30 9PY
Tel: 0161 707 7584
Email: monton.sales@ascendproperties.com,
monton.lettings@ascendproperties.com
www.ascendproperties.com

Ascend

Built on higher standards



Edwin Court, Eccles, Manchester

£750 PCM

Welcome to DifRent homes at Bridgewater Park. Bridgewater Park is a friendly, sought-after development located in Eccles, just 5 miles from the centre of Manchester city centre. Bridgewater Park offers the perfect balance of a peaceful canal-side setting and easy access to the vibrant city atmosphere.

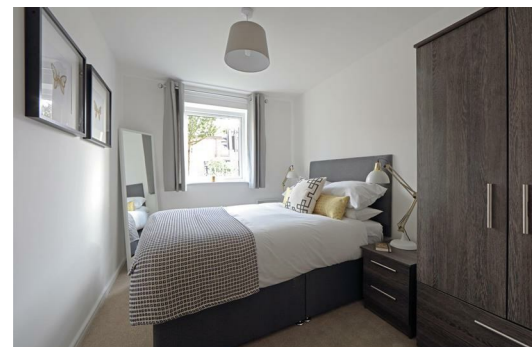
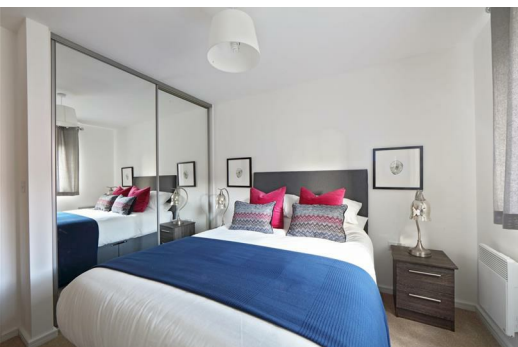
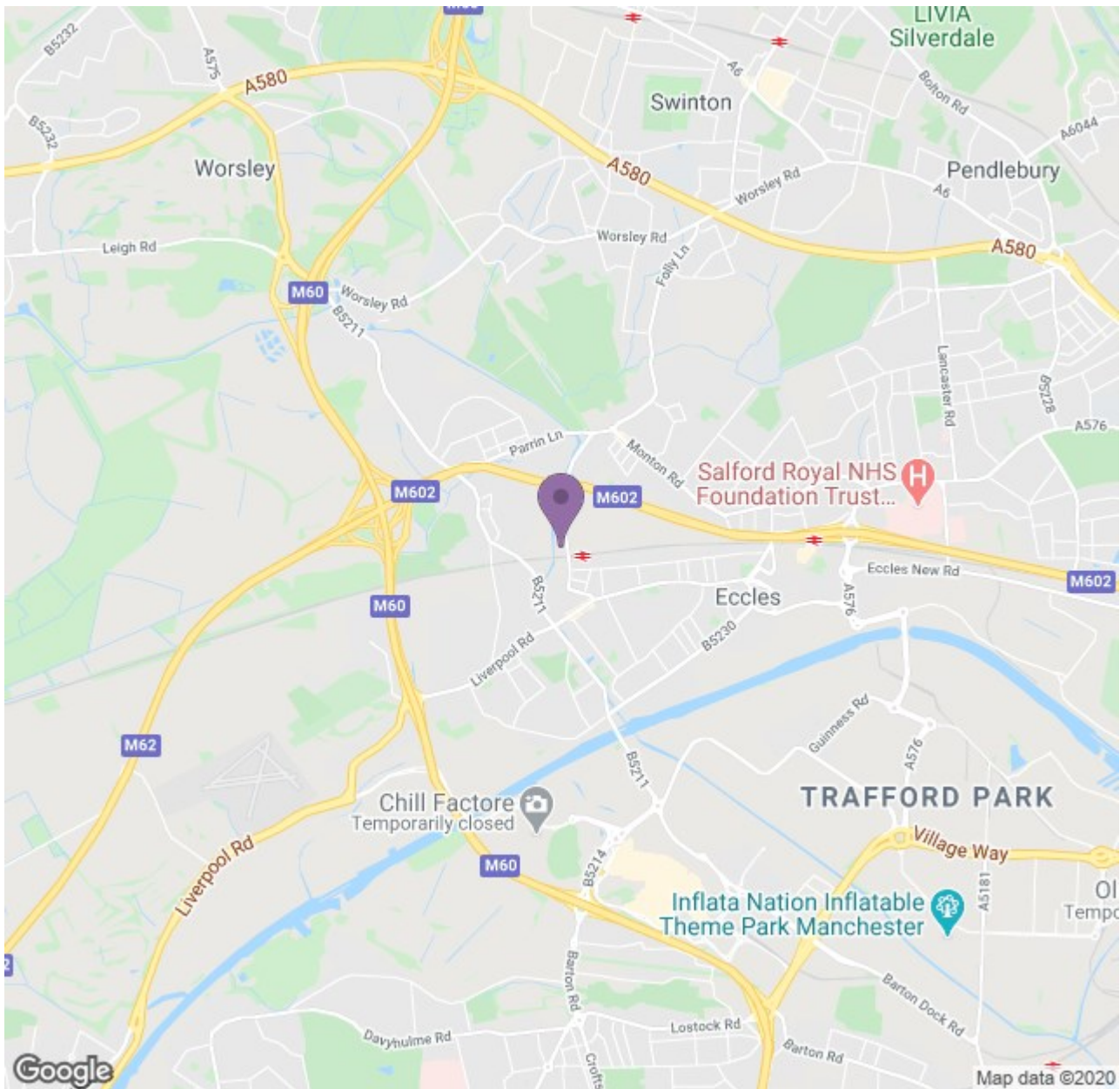
Want something cosy and contemporary? Don't compromise. With our Lincoln apartments, you get a spacious living room, fully kitted out open-plan kitchen and dining area, two beautiful double bedrooms and a family size bathroom with separate bath and shower. Comfortable, and with plenty of up-to-the-minute features and appliances, our Lincoln apartments offer an expansive, homely feel. Energy efficient, there is quality flooring throughout, and topnotch security means you can enjoy peace of mind as well as comfort.

Whilst this property is a new build property, it has been previously let. All properties are maintained and inspected once a tenant has moved out in order to keep the property to a high standard.

Images are demonstrative of this property type. The images are therefore not plot or site specific and spec may vary slightly. Properties are let unfurnished.

Available 3rd June 2020





| Energy Efficiency Rating | | Environmental Impact (CO ₂) Rating | |
|---------------------------------------------------------------------------------------------------------------------------------------------------------------------------------------------------------------------------------------------------------------------|--------|-------------------------------------------------------------------------------------------------------------------------------------------------------------------------------------------------------------------------------------------------------------------|--------|
| Current | Target | Current | Target |
| | | | |
| <small> A 92-100 B 81-91 C 69-80 D 55-68 E 49-54 F 45-48 G 41-44 </small> | | <small> A 1-10 B 11-20 C 21-30 D 31-40 E 41-50 F 51-60 G 61-70 </small> | |
| <small> Energy Efficiency Rating is based on the Energy Performance Certificate (EPC) for the property. </small> | | <small> Environmental Impact (CO₂) Rating is based on the Environmental Impact Certificate (EIC) for the property. </small> | |
| <small> England & Wales 2020-2021 </small> | | <small> England & Wales 2020-2021 </small> | |