


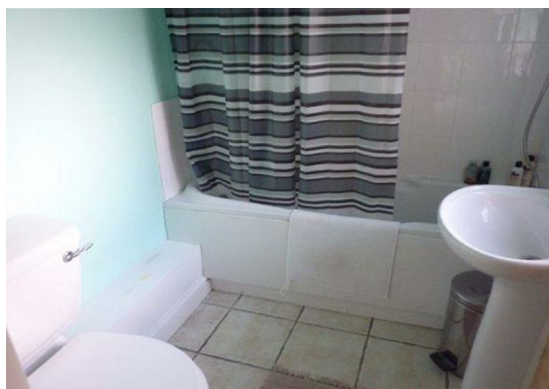
28 Brunswick Street
York, YO23 1EB
£750 PCM

 2  null  null  C

Churchills welcome you to view well presented, smartly decorated 2 bedroom terraced house in the popular area of South Bank. Close to the Knavesmire, with excellent local amenities and easy access into York City Center. The property comprises a Lounge, Dining Kitchen, Bathroom, to the first floor are two double bedrooms. The rear of the property benefits from decked rear yard and residents parking scheme.

Available Beginning of May.

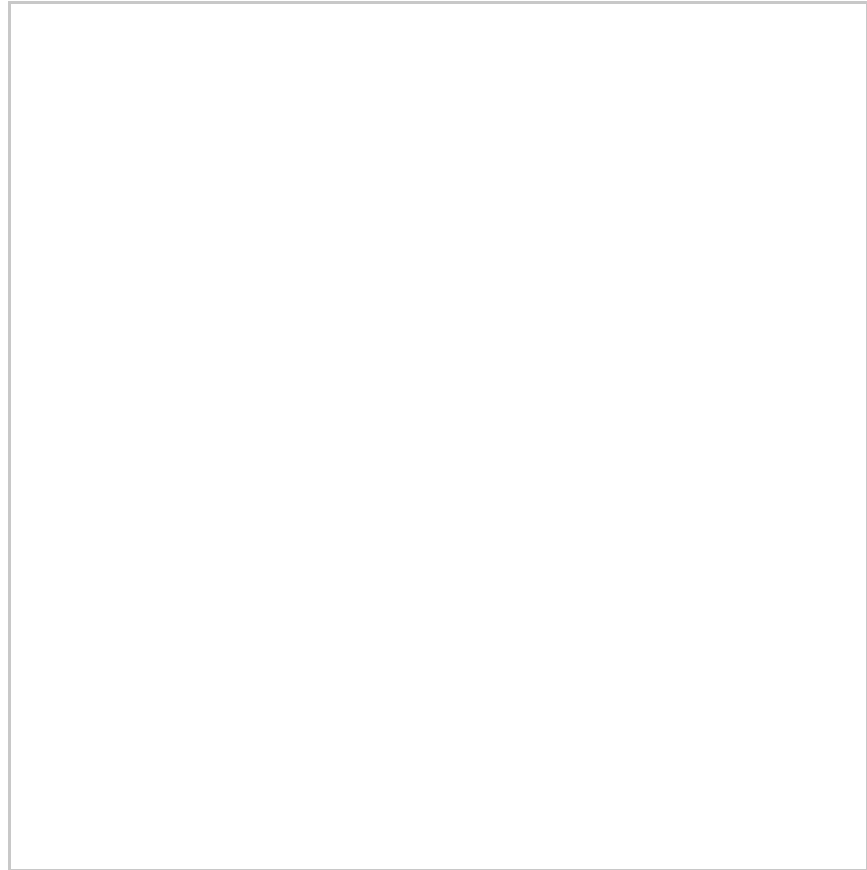
Please contact our Gillygate office for more information and to arrange a viewing.



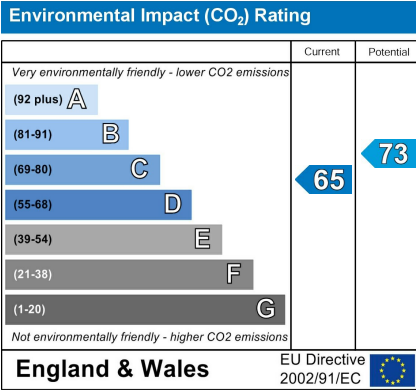
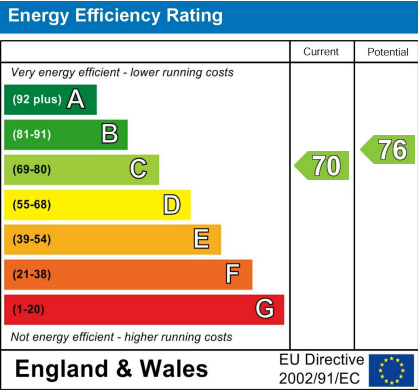
FLOOR PLAN



LOCATION



EPC



These particulars, whilst believed to be accurate are set out as a general outline only for guidance and do not constitute any part of an offer or contract. Intending purchasers should not rely on them as statements of representation of fact, but must satisfy themselves by inspection or otherwise as to their accuracy. No person in this firms employment has the authority to make or give any representation or warranty in respect of the property.