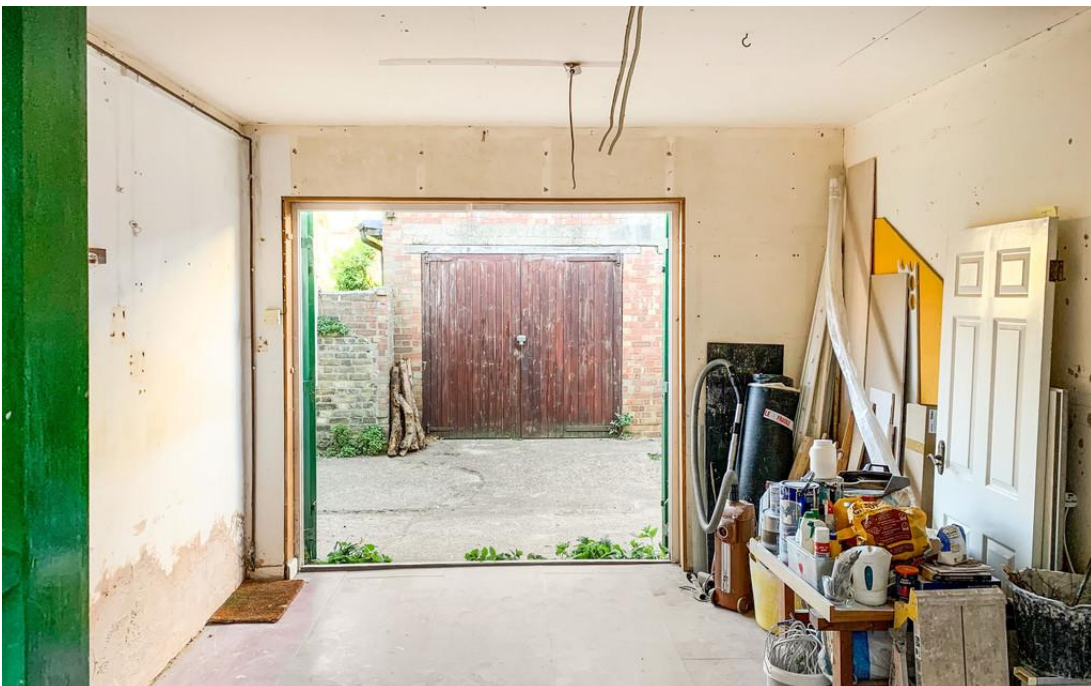




Leicester Mews, East Finchley, N2 9EJ

£450,000

 2 Bedrooms  1 Bathrooms  1 Receptions



East Finchley Office

158 High Road, East Finchley, London, N2 9AS

Tel: 0208 883 2621 Email: eastfinchley@adam-hayes.co.uk Web: www.adam-hayes.co.uk

Leicester Mews, East Finchley, N2 9EJ

£450,000



2 Bedrooms



1 Bathrooms



1 Receptions

Key Features

- Unmodernised B1 Category C
- Character Features
- Popular Location
- Potential To Be Converted (STPP)
- Chain Free
- Courtyard Garden

Nearest Stations

-
-
-

%epcGraph_c_1_414%

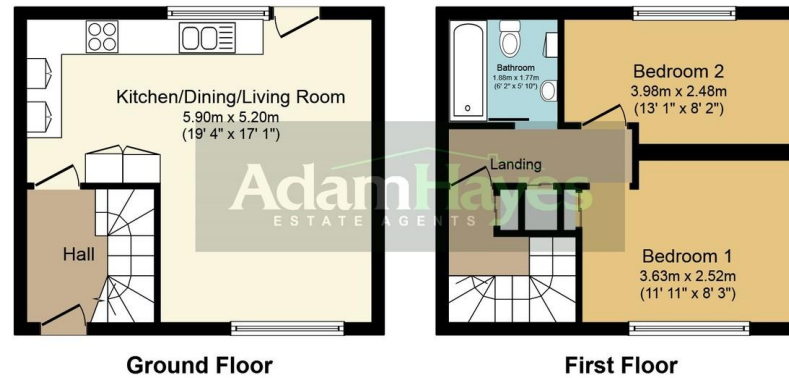
Property Description

CASH BUYERS ONLY!!! Situated in this POPULAR Mews off Leicester Road and within walking distance to local shops, amenities and EAST FINCHLEY TUBE STATION is this UNMODERNISED B1 Category C (Light Industrial) Freehold building. The property has POTENTIAL TO BE CONVERTED into a TWO BEDROOM MEWS HOUSE OR two self-contained offices (STPP). The building benefits from a COURTYARD GARDEN, original CHARACTER FEATURES a bathroom and is OFFERED CHAIN FREE. However to really appreciate the size, location and potential an internal viewing is highly recommended.

East Finchley Office

158 High Road, East Finchley, London, N2 9AS

Tel: 0208 883 2621 Email: eastfinchley@adam-hayes.co.uk Web: www.adam-hayes.co.uk



Total floor area 62.0 sq. m. (667 sq. ft.) approx
This plan is for illustration purposes only and may not be representative of the property. Plan not to scale.

These particulars, whilst believed to be accurate are set out as a general outline only for guidance and do not constitute any part of an offer or contract. Intending purchasers should not rely on them as statements or representation of fact, but must satisfy themselves by inspection or otherwise as to their accuracy. We have not carried out a detailed survey not tested the services, appliances and specific fittings. Room sizes should not be relied upon for carpets and furnishings. The measurements given are approximate. No person in this firms employment has the authority to make or give any representation or warranty in respect of the property.