



HOWARD BUILDING 368 QUEENSTOWN ROAD,  
BATTERSEA, SW11  
£2,578 Per Month

T. +44 (0) 20 7935 0011  
E. [enquire@napierwatt.co.uk](mailto:enquire@napierwatt.co.uk)  
[WWW.NAPIERWATT.CO.UK](http://WWW.NAPIERWATT.CO.UK)

**NAPIER WATT**  
PROPERTY CONSULTANTS



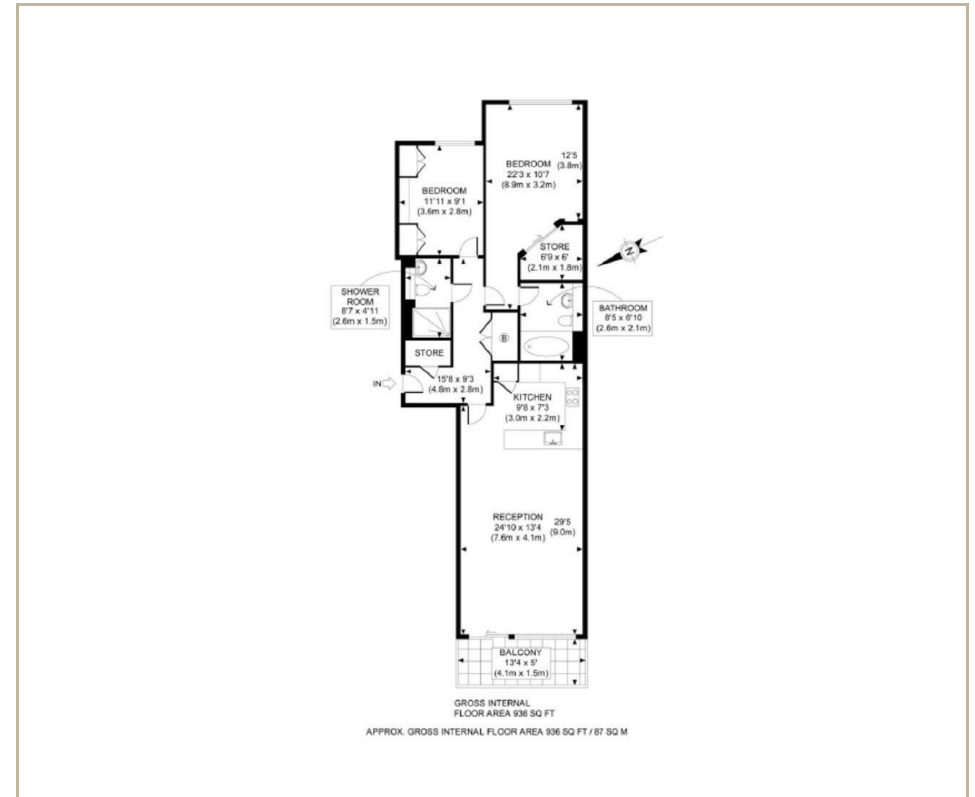
# HOWARD BUILDING 368 QUEENSTOWN ROAD, BATTERSEA, SW1 1

£2,578 Per Month

## Description

A spacious two bedroom, two bathroom apartment located on the third floor in the Howard Building at Chelsea Bridge Wharf. This lovely apartment has a well equipped open plan kitchen/living area with full length windows. A good sized balcony over looking the peaceful views of the piazza water gardens. The spacious master bedroom includes an en-suite bathroom and has a large walk-in wardrobe. Second

bedroom. Separate shower room/guest WC situated in the hallway. Shiny wooden floor laid throughout living area and hallway. Lots of storage. Chelsea Bridge Wharf is London's most glamorous riverside development located just 0.75 miles from Sloane Square. There is a 24 hour concierge and security service. Secure underground car parking is available (extra cost). A luxury four star hotel is located at the development.



## TERMS

**For Clarification** we wish to inform prospective purchasers that we have prepared these sales particulars as a general guide. We have not carried out a survey, nor tested the services, appliances and specific fittings. Room sizes are approximate and rounded: they are taken between internal wall surfaces and therefore include cupboards/shelves, etc. Accordingly, they should not be relied upon for carpets and furnishings. Formal notice is given that all fixtures and fittings, carpeting, curtains/blinds and kitchen equipment, whether fitted or not, are deemed to be removable by the vendor unless specifically itemised within these sales particulars.

T. +44 (0) 20 7935 0011  
E. [enquire@napierwatt.co.uk](mailto:enquire@napierwatt.co.uk)  
[WWW.NAPIERWATT.CO.UK](http://WWW.NAPIERWATT.CO.UK)

**NAPIER WATT**  
PROPERTY CONSULTANTS