



**MILES ESTATE AGENTS**

**Longlands Farm , Norton Fitzwarren, Taunton,  
Somerset TA2 6PW**





A substantial period Farmhouse, peacefully situated between Bishops Lydeard and Norton Fitzwarren, offering generously proportioned and flexible 4/5 bedroom accommodation set in 8.63 acres of land with outbuildings and superb views. Lots of character, further development potential (Subject to PP) and easy access to amenities. Early viewing highly recommended.







## Features:

- Reception Hall
- Sitting Room with Inglenook Fireplace and Woodburning Stove
- Superb Dining Room with Feature Beams
- Cosy Snug with Woodburner
- Modern Kitchen/Breakfast Room
- Utility / Boot Room
- Bedroom / Gym with EnSuite Shower Room
- Further Bedroom / Study with Vaulted Ceiling
- 4 Double Bedrooms (Master En Suite Bathroom)
- Modern Family Bathroom
- 2 Garages & Workshop with Parking
- Garden, Orchard and Paddocks - 8.63 Acres in Total
- Large Useful Outbuildings with Potential For Re-Development (Planning Application pending)
- Council Tax Band G







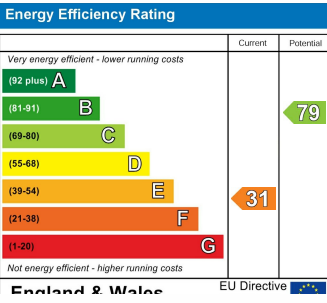
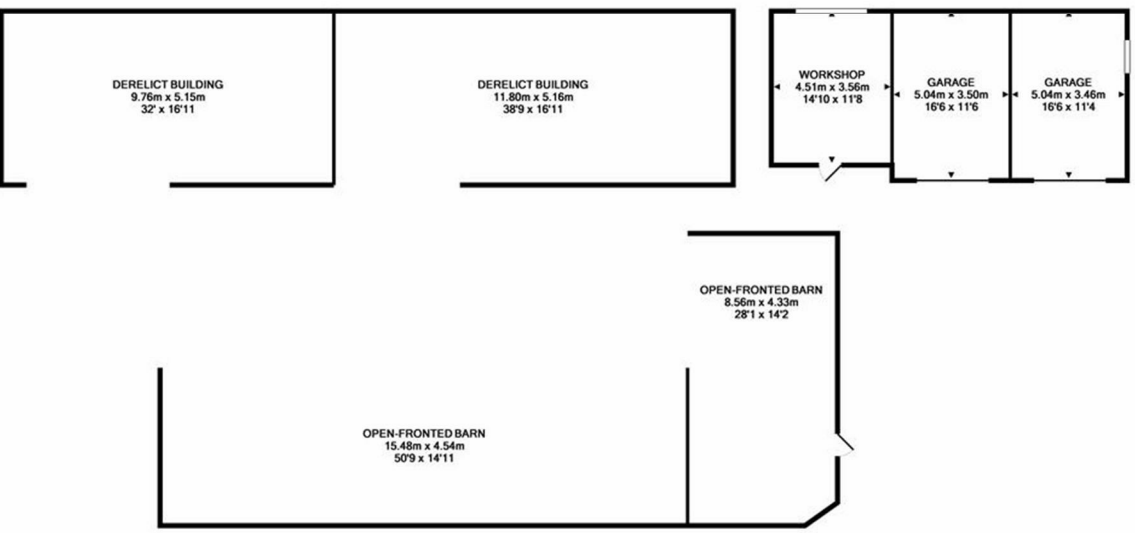






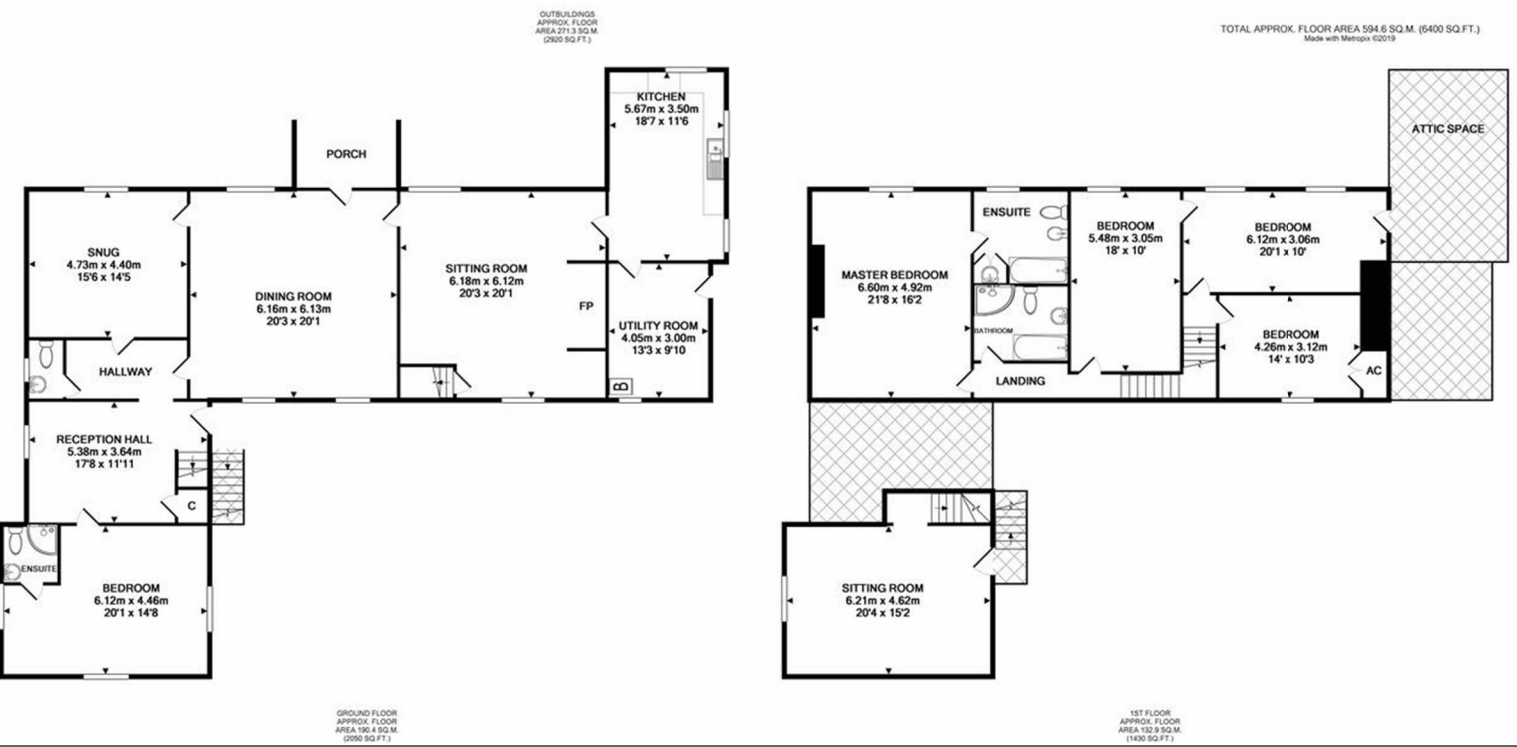






Viewings strictly through the selling agents:

**Miles Estate Agents**  
 2 Piffin Lane, Bishops Lydeard, Taunton,  
 Somerset, TA4 3AS  
**Tel: 01823 470 500**  
[lydeard@milesestateagents.co.uk](mailto:lydeard@milesestateagents.co.uk)  
[www.milesestateagents.co.uk](http://www.milesestateagents.co.uk)



**MILES ESTATE AGENTS**





