



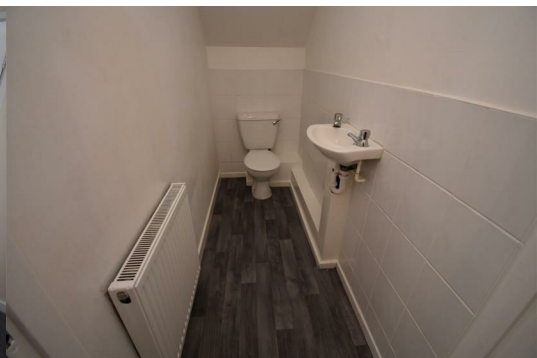
## 2 Sherwood Court

Platt Bridge, Wigan, WN2 5AG

**£675 PCM**



We are delighted to offer this four bedroom three storey semi detached house in the popular residential area of Platt Bridge offering close proximity to local amenities, transport links, schools and churches. The living accommodation comprises briefly of: entrance / hallway, ground floor WC, lounge with large open plan dining room / modern fitted kitchen to the rear elevation. To the first floor there are three bedrooms and family bathroom/WC with three piece suite in white. The second floor has a landing / study area leading to a large master bedroom which benefits from an en-suite shower room. The property is newly painted throughout with a neutral decor and newly carpeted floors with laminate flooring to the ground floor only adds to the charm of this beautiful family home. To the front of the property is a spacious driveway that offers and offers sufficient off road parking. Further features include: gas central heating, double glazing and gardens to the front and rear. Early viewings are highly recommended to fully appreciate this stunning home. No Smokers. No Pets.



GROUND FLOOR

Entrance / Hallway

Downstairs WC

Lounge

Inner Hallway

Kitchen / Diner

FIRST FLOOR

Landing

Bedroom 2

Bedroom 3

Bedroom 4

Bathroom

SECOND FLOOR

Study Space

Master Bedroom

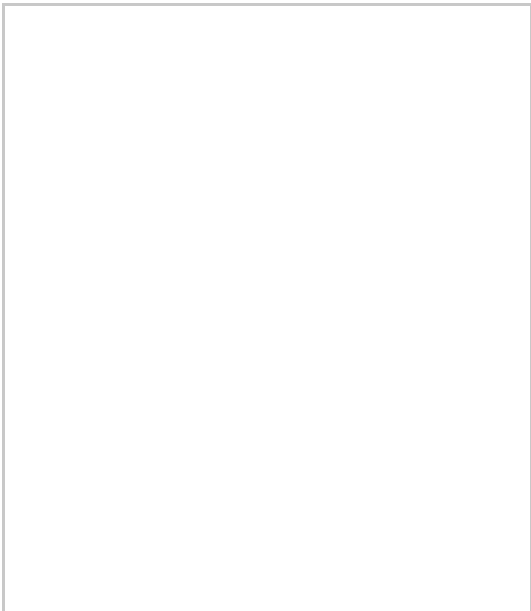
Ensuite

EXTERNAL

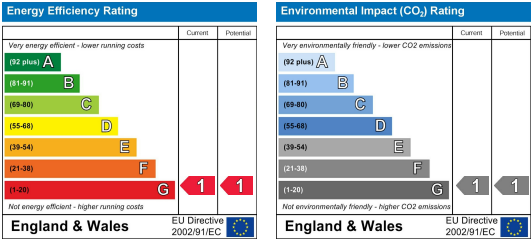
Area Map



Floor Plans



Energy Efficiency Graph



These particulars, whilst believed to be accurate are set out as a general outline only for guidance and do not constitute any part of an offer or contract. Intending purchasers should not rely on the representation of fact, but must satisfy themselves by inspection or otherwise as to their accuracy. No person in this firms employment has the authority to make or give any representation or warranty in relation to the property.

