

Crediton Close, Coventry, CV3 5PX

newman
property experts



Crediton Close || CV3 5PX

No Offers £280,000



Set back on a small development off Exminster Road. Quietly tucked away, this home is within close distance to good schools in the area including, Howes Primary, Manor Park Primary, St Thomas More Primary, Finham Park and King Henry VIII.

Local road networks include A46 and A45 junctions and well placed for University of Warwick and local business parks. It's just 15 minutes walk to JLR, and less than a minute to the No. 3 bus stop for the train station and city centre.

The ground floor comprises; entrance hallway, lounge, kitchen diner, utility room and a WC.

The first floor comprises; landing, master bedroom with built in wardrobe and En-suite shower room, 2nd double bedroom with Juliette balcony, 3rd double bedroom, 4th single bedroom and a family bathroom with shower over the bath.

To the front is a driveway and a garage which has dual access to the rear. To the rear is a landscaped garden with decked area.

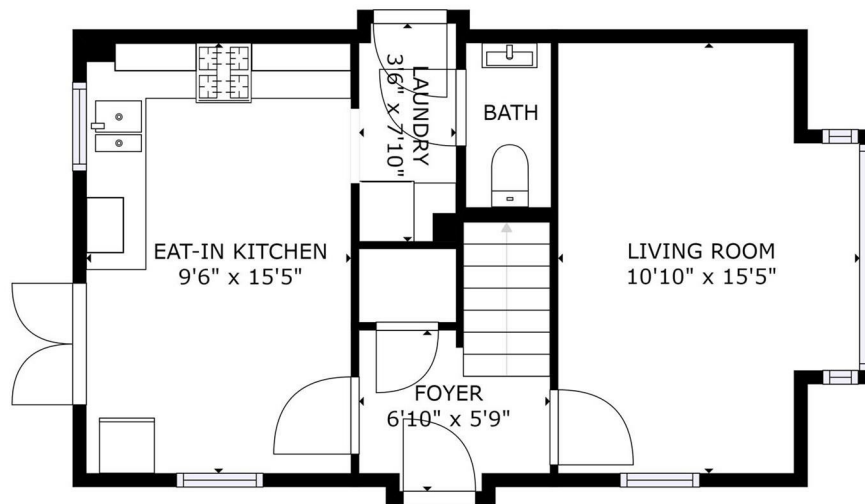


Call me
to book a
viewing



Paul Petticrew
02476 500019

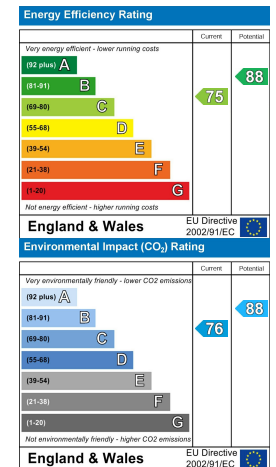
- Link Detached House
- 4 Bedrooms
- Lounge
- Kitchen Diner
- Utility Room & WC
- En-suite to Master Bedroom
- Juliette Balcony
- Garage & Driveway
- Energy Rating C



FLOOR 1



FLOOR 2



02476 500019

paul.petticrew@newman.uk.com

newman.uk.com

Friars House, Manor House Drive, Coventry
CV1 2TE

Agents note: All measurements are approximate and whilst every attempt has been made to ensure accuracy they are for general guidance only and must not be relied on. The fixture and fittings referred to have not been tested and therefore no guarantee can be given that they are in working order. Internal photographs are reproduced for general information and it must not be inferred that any item shown is included with the property. Newman Property Services Ltd. Registered Office: 1 Regent Street, Rugby, CV21 2PE. Registered in England & Wales: 4018410. VAT Registration No. 754 0628 33

newman
property experts