



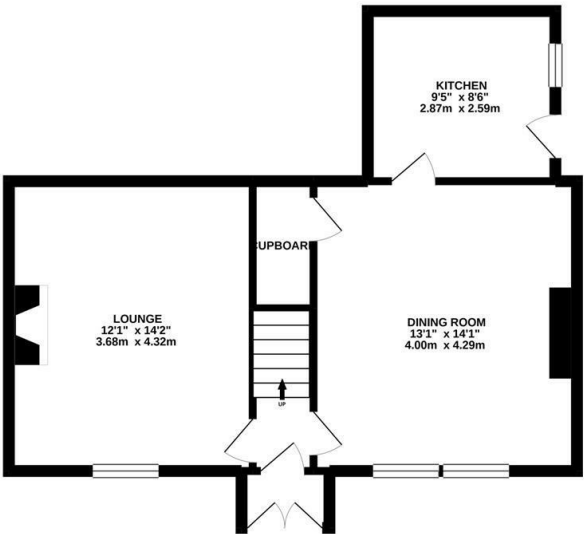
An elegant, double fronted end of terrace ideally located at Cherryburn Gardens, Fenham! Cherryburn gardens, a pedestrianised terrace, close to Newcastle City Centre and is perfectly placed to give access to surrounding greenery, the Newcastle hospitals and only a short walk from one of the region's finest independent schools.

The accommodation briefly comprises entrance porch through to entrance hall with staircase to first floor; lounge with feature fireplace and stripped wood flooring; dining room with stripped floors and storage; kitchen with wall and base units, work surfaces and a door leading out to the rear yard. To the first floor, two double bedrooms and the family bathroom with separate w/c. Externally, a generous yard to the rear, a blank canvas with up and over door and garden to the front, mainly decked with high-hedged boundaries. With tall ceilings and stripped wood floors this great family home demands an early inspection.

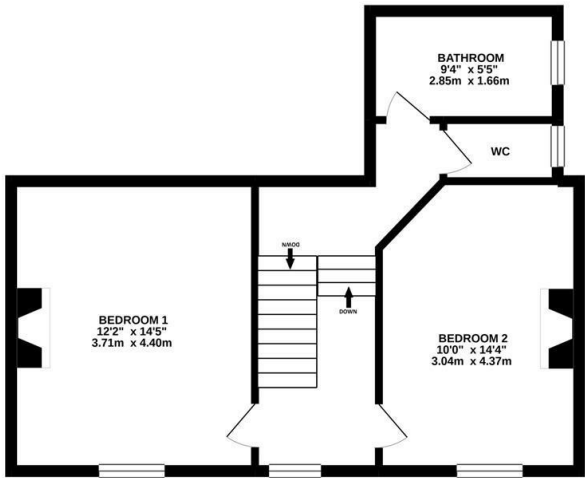
End of Terrace | Two Bedrooms | 965 Sq. ft (89.7m2) | Two Receptions | Kitchen | Bathroom & Separate W/C | Front Garden & Rear Yard | Period Features | EPC Rating: Tbc



GROUND FLOOR
490 sq.ft. (45.5 sq.m.) approx.



1ST FLOOR
476 sq.ft. (44.2 sq.m.) approx.



TOTAL FLOOR AREA : 965 sq.ft. (89.7 sq.m.) approx.

Whilst every attempt has been made to ensure the accuracy of the floorplan contained here, measurements of doors, windows, rooms and any other items are approximate and no responsibility is taken for any error, omission or mis-statement. This plan is for illustrative purposes only and should be used as such by any prospective purchaser. The services, systems and appliances shown have not been tested and no guarantee as to their operability or efficiency can be given.
Made with Metropix ©2020



Offers Over £185,000

IMPORTANT NOTE: These particulars and the descriptions and measurements herein do not constitute representation and whilst every effort has been made to ensure accuracy, this cannot be guaranteed.

