

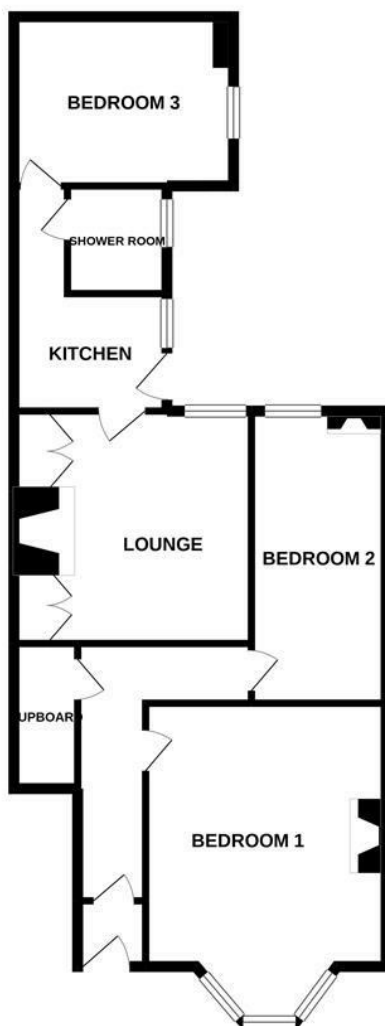


This three bedroom 'Tyneside' flat is ideally located at Buston Terrace Jesmond. Buston Terrace, situated close to Jesmond Dene Road, is within walking distance to the shops, restaurants and café culture of Central Jesmond as well as excellent local schools, Jesmond Dene and Jesmond Metro Station which is also only a short walk away. The property also benefits from easy access to the shops and amenities of The Cradlewell.

Boasting in excess of 750 Sq ft, the accommodation briefly comprises: entrance lobby through to entrance hall with under-stairs store; lounge with alcove storage; kitchen, with fitted units and a door leading to the rear yard; shower room with three piece suite including a walk in shower; three bedrooms, bedroom one with walk in bay. Externally the property also benefits from a private rear yard, with wall boundaries and gated access leading to the rear service lane. Offered to the market with no onward chain and with gas central heating and double-glazing, an early internal inspection is absolutely essential.

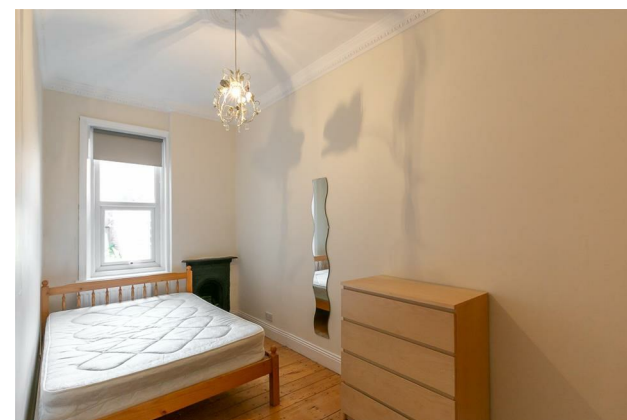
Lower 'Tyneside' Flat | 759 Sq ft (70.5 m2)
 | Three Bedrooms | Lounge | Kitchen |
 Shower Room | Private Rear Yard | GCH &
 DG | Excellent Location | EPC Rating: D

GROUND FLOOR
 759 sq.ft. (70.5 sq.m.) approx.



TOTAL FLOOR AREA : 759 sq.ft. (70.5 sq.m.) approx.

Whilst every attempt has been made to ensure the accuracy of the floorplan contained here, measurements of doors, windows, rooms and any other items are approximate and no responsibility is taken for any error, omission or mis-statement. This plan is for illustrative purposes only and should be used as such by any prospective purchaser. The services, systems and appliances shown have not been tested and no guarantee as to their operability or efficiency can be given.
 Made with Metropix ©2020



Offers Over £180,000

IMPORTANT NOTE: These particulars and the descriptions and measurements herein do not constitute representation and whilst every effort has been made to ensure accuracy, this cannot be guaranteed.

