



Modern end of terrace townhouse with outstanding views over fields

exclusive to

SAUNDERS

richardsaunders.co.uk

Kingswood KT20

Kingswood Village ½ mile

London 17 miles

M23/25 3 miles London by rail 50 minutes

All times and distances are approximate

In an outstanding location overlooking open fields and yet within a few minutes walk of the village and station, this modern townhouse has a beautifully presented, 4-bedroom interior with spacious living areas and courtyard garden. Available with no onward chain.

Entrance Hall

Cloakroom Sitting Room

Open plan Kitchen - Dining - Family Room

Utility Room

4 Double Bedrooms 2 Bathrooms, Shower Room

Neat Frontage Courtyard Rear Garden

Garage in block at the Rear

Designated Parking

Price £840,000



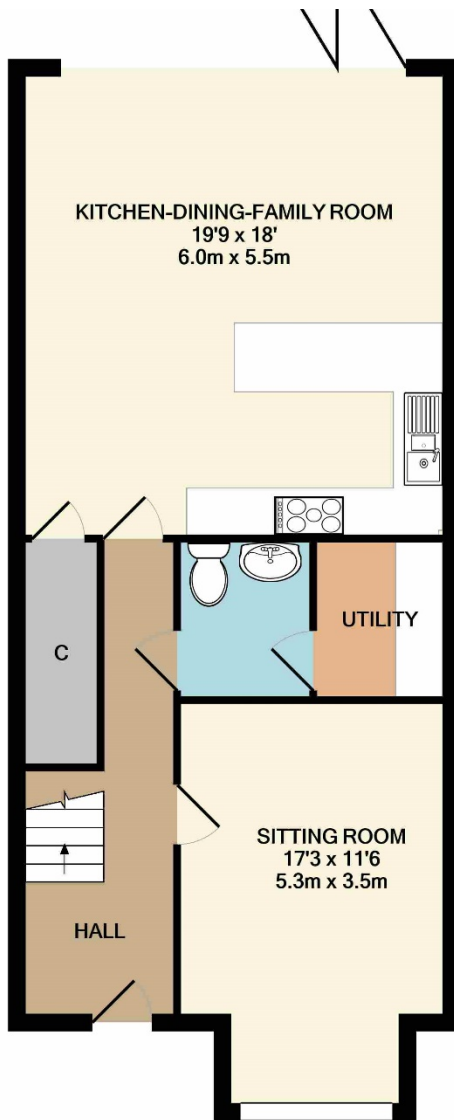


Approached over a long, private driveway and through double gates Kingswood Park has an air of exclusivity whilst being within a few minutes walk of Kingswood Village and the Station with commuter rail services to London. Nearby the A217 gives an arterial route to the M25 at Reigate bringing both London Airports within easy reach. For shopping, sport, leisure and culture this part of the Surrey Hills has much to offer.

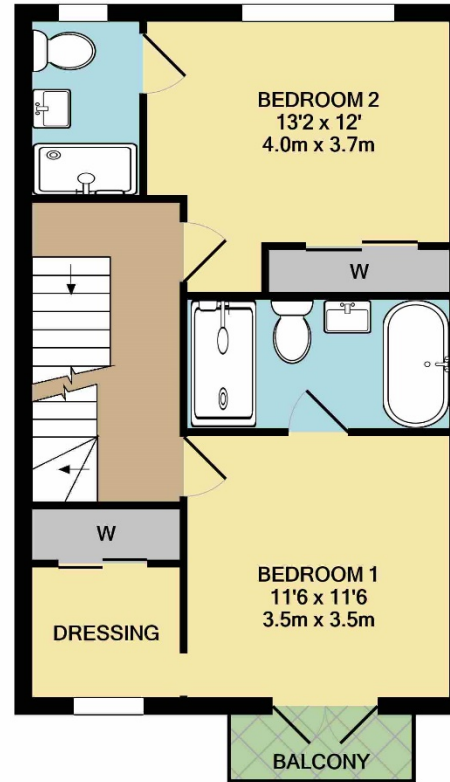
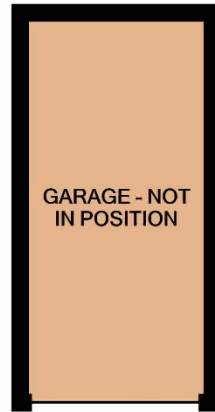
One of a select development completed in 2015, this end of terrace townhouse has arguably the best location at the end of the close and enjoys superb views to the front over open fields. The interior is swish and contemporary featuring an open plan kitchen-dining-family room with full width bi-fold doors to the courtyard garden creating a lovely living space both inside and out.

Spacious, open plan Kitchen - Dining - Family room | Full width Bi-Fold Doors to Garden | Contemporary Kitchen with appliances | Separate Utility Room | Luxurious Bath/Shower Rooms | Wardrobes to all Bedrooms | Dressing Room to Principal Suite | Secure Garage plus Private Parking | Superb Views over fields | No Onward Chain.

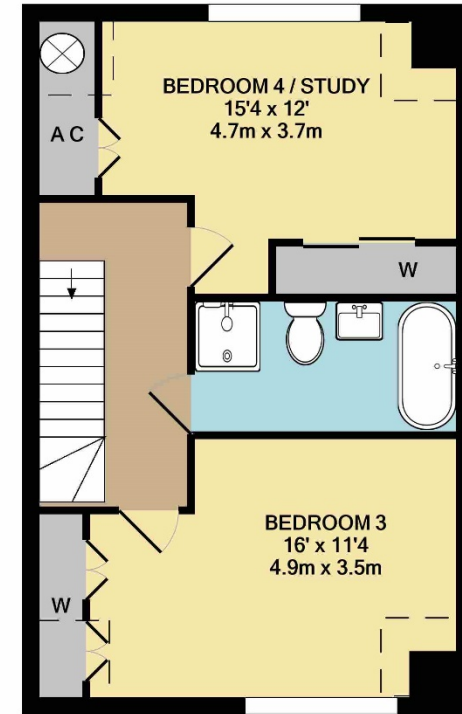




GROUND FLOOR
APPROX. FLOOR
AREA 890 SQ.FT.
(82.7 SQ.M.)



1ST FLOOR
APPROX. FLOOR
AREA 529 SQ.FT.
(49.2 SQ.M.)



2ND FLOOR
APPROX. FLOOR
AREA 520 SQ.FT.
(48.3 SQ.M.)

TOTAL FLOOR AREA: 1939 SQ FT (180.1 SQ M) approx.

IMPORTANT NOTICE TO PURCHASERS: We endeavour to make our sales particulars accurate and reliable, however, they do not constitute or form part of an offer or any contract and none is to be relied upon as statements of representation or fact. The services, systems and appliances listed in this specification have not been tested by us and no guarantees as to their operating ability or efficiency are given. All measurements have been taken as guide to prospective buyers only, and are not precise. If you require clarification or further information on any points, please contact us, especially if you are travelling some distance to view.

Viewing
Please call us to arrange
a viewing appointment

1 Waterhouse Lane
Kingswood
01737 360000

2 High Street
Banstead
01737 363333

Residential Lettings
All Areas
01737 370700

SAUNDERS

richardsaunders.co.uk