



Enclosed in this brochure, you will discover the details of a new property listing, proudly presented by Net Lettings



VIBECA APARTMENTS, 7 CHICKSAND STREET, LONDON, E1 5LD

## One-Bedroom Apartment

£2,000 per calendar month

Enviably located just a short distance from the City and on the doorstep of Spitalfields Market and trendy Brick Lane, this stylish and contemporary one-bedroom apartment is ideal for young professionals. Set within this private development.

- Private Development
- Open plan kitchen/living room
- Modern Neutral Decor
- Furnished
- Secure Entry
- Communal Garden

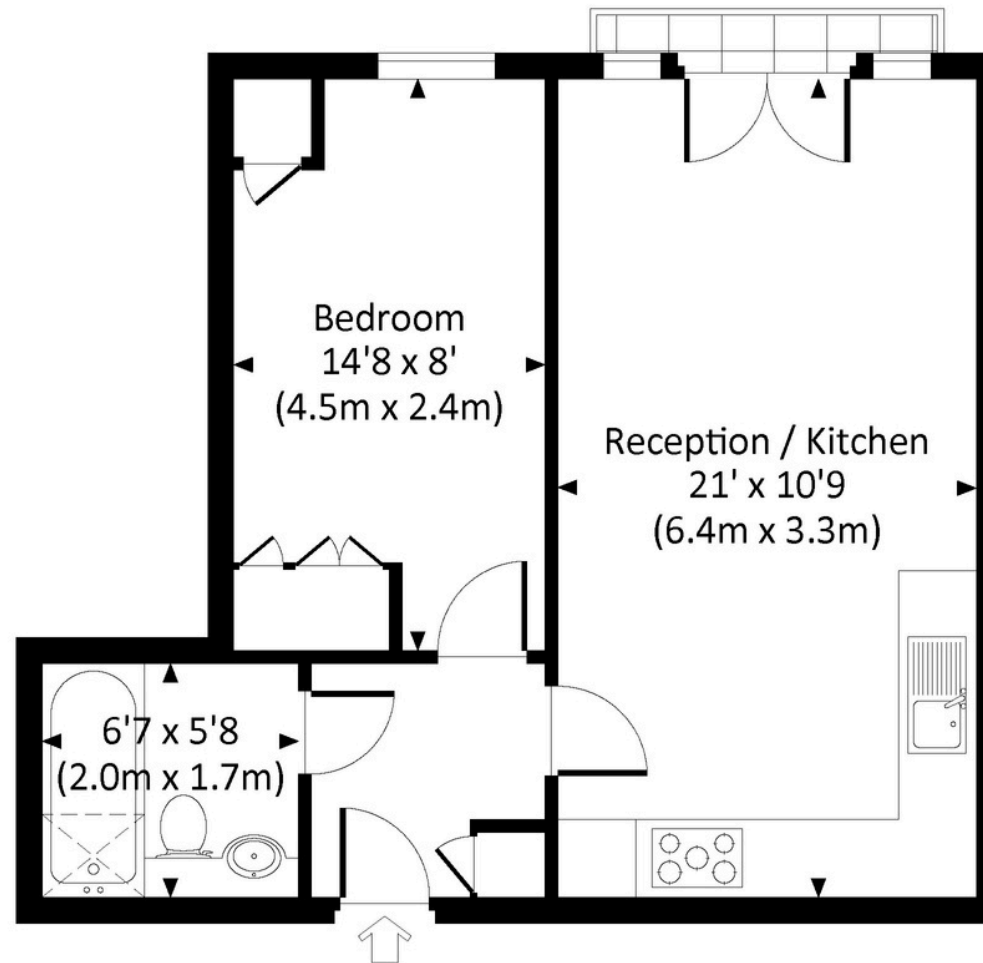
Viewings by appointment only  
[info@netlettings.com](mailto:info@netlettings.com)  
0208 981 5551



VIBECA APARTMENTS, CHICKSAND STREET, SPITALFIELDS, E1

Approx. gross internal area

430 Sq Ft. / 39.9 Sq M.



FIRST FLOOR



All measurements have been made in accordance with RICS Code of Measuring Practice which are approximate only and only for illustrative purposes. For the avoidance of doubt, Dowling Jones Design shall not be liable for any reliance on these measurements. © 2017 www.dowlingjones.com 020 7610 9933

## Location & Transport

Spitalfields, located in the heart of East London, is a vibrant and sought-after area renowned for its unique blend of historic charm and modern amenities. This dynamic neighbourhood is anchored by the iconic Spitalfields Market, where you'll find an array of trendy boutiques, artisan stalls, and gourmet eateries. The area boasts a rich cultural scene, with numerous art galleries, theatres, and music venues contributing to its lively atmosphere.

Residents enjoy the convenience of excellent transport links, including Liverpool Street Station, providing easy access to the City and beyond. Spitalfields is also home to an eclectic mix of Georgian architecture and contemporary developments, offering a variety of living spaces to suit different tastes.



Aldgate East Station – 7 mins walk



Liverpool Street Station – 13 mins walk

Liverpool Street; 13 mins walk





For more information or to arrange a viewing,  
please get in touch with us at:

Phone: 0208 981 5551

Email: [info@netlettings.com](mailto:info@netlettings.com)

311 Commercial Road, London, E1 2PS

We aim to make our particulars both accurate and reliable. However, they are not guaranteed; nor do they form part of an offer or contract. If you require clarification on any points then please contact us, especially if you're travelling some distance to view. Please note that appliances and heating systems have not been tested, and therefore no warranties can be given as to their good working order.