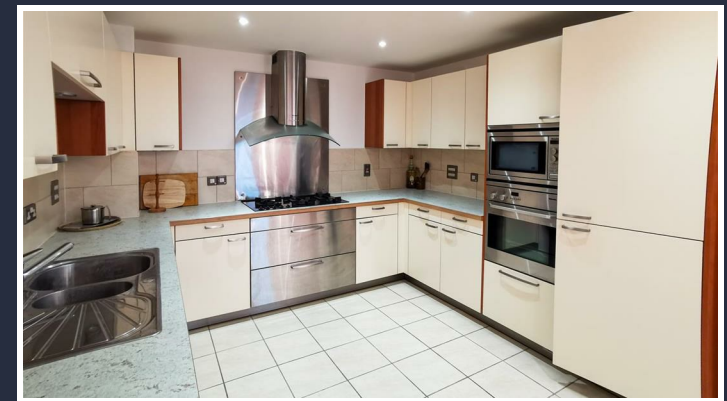




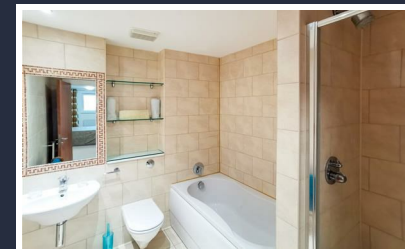
The Quay
• Poole • Dorset



92 The Quay, Poole, Dorset BH15 1HH

£375,000

FAR REACHING VIEWS OF SANDBANKS AND STUDLAND - A large 2 double bedroom 5th floor apartment for sale in the desired Dolphin Quays development, situated on Poole Quay.



Welcome to The Quay ...

The apartment has a high end finish throughout, with extensive storage space and high quality appliances from Miele in the kitchen.

The kitchen/living room boasts views of the Purbeck Hills and Sandbanks in the distance, with access onto the balcony.

The master suite measures over 23 foot in length, has a built in double wardrobe and boasts a large luxurious ensuite with both shower and bath facilities. The second bedroom also has access to the balcony.

The family bathroom is similarly fitted with an equally high quality suite. From the hallway there is also 3 separate cupboards providing vital storage space.

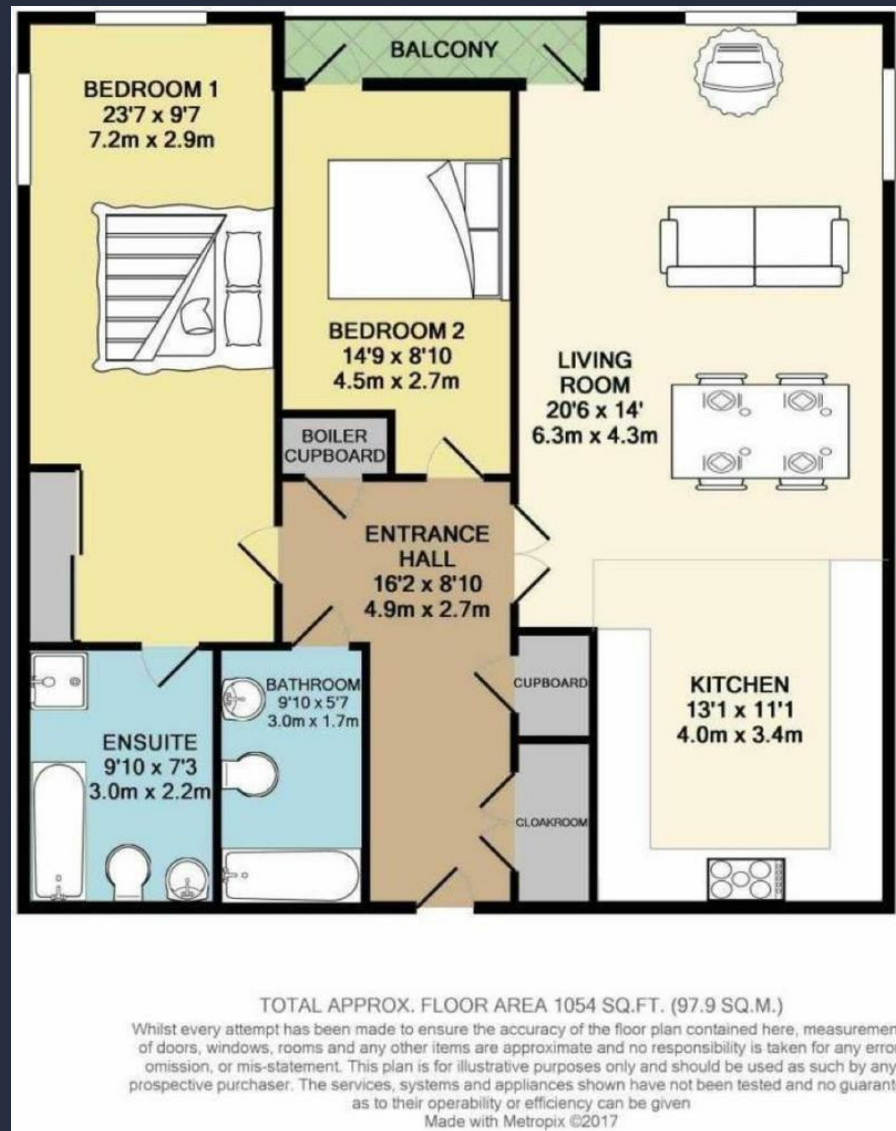
There is 24 Hour concierge at the main entrance to Dolphin Quays. The apartment has an allocated parking space in the gated car park located to the rear of the development.

Council Tax Band D: £1517.85 payable per annum.

Pets are allowed (subject to permission)

Leasehold property – Ground Rent £250.00 every 6 months and service charge £1690.84 every 6 months (service charge includes but is not limited to Buildings insurance, lift maintenance, communal area cleaning and utilities, window cleaning and 24/7 concierge service)





Viewing Strictly by appointment through Lloyds.
VIEWING 7 DAYS A WEEK Ref: 15238683

Important Notice

Lloyds, their clients and any joint agents give notice that:

1. They have no authority to make or give any representation or warranties in relation to the property. These particulars do not form part of an offer or contract and must not be relied upon as statements or representations of fact.
2. Any areas, measurements or distances are approximate. The text, photographs and plans are for guidance only and are not necessarily comprehensive. It should not be assumed that the property has all necessary planning, building regulation or other consents and Lloyds have not tested any services, equipment or facilities. Purchasers must satisfy themselves by inspection or otherwise.

