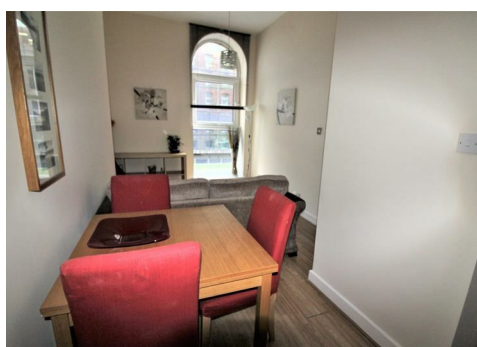
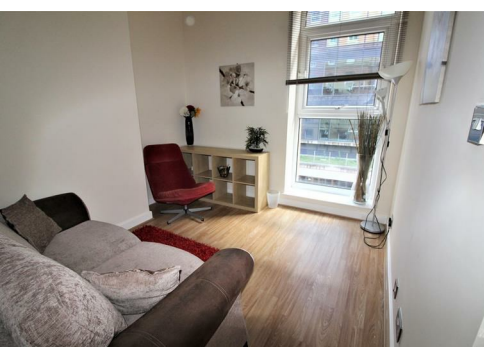




City Central 27 Wellington Street, Leeds LS1 4EA £675 PCM

ONE BEDROOM APARTMENT SET IN THIS STUNNING GRADE II LISTED CONVERSION IN THE SOUGHT AFTER LOCATION OF WELLINGTON STREET Located in the heart of the City centre and a few minutes walk to the train station and all amenities. The apartment is set on the second floor and comprising; Entrance hall, open plan living room and kitchen, double bedroom and bathroom. FURNISHED. Bond £770. Available Now. SORRY NO PETS.



Energy Efficiency Rating		Environmental Impact (CO ₂) Rating			
Very energy efficient - lower running costs	Current	Potential	Very environmentally friendly - lower CO ₂ emissions	Current	Potential
(92 plus) A			(82 plus) A		
(81-91) B			(81-91) B		
(69-80) C			(69-80) C		
(55-68) D			(55-68) D		
(39-54) E			(39-54) E		
(21-38) F			(21-38) F		
(1-20) G			(1-20) G		
Not energy efficient - higher running costs		Not environmentally friendly - higher CO ₂ emissions			
England & Wales		England & Wales			
EU Directive 2002/91/EC		EU Directive 2002/91/EC			

Please note, a holding deposit equivalent to one week rental will be payable upon application and this will form part of the first month rent.

