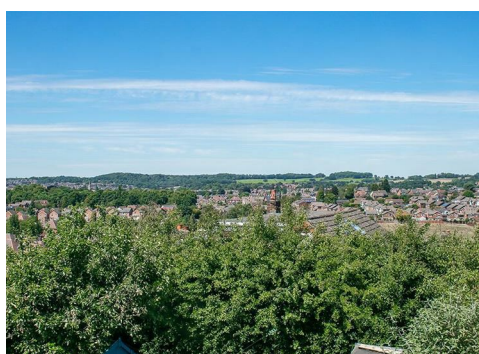


Longridge Road, Woodthorpe, Nottingham, NG5 4LX

DavidJames
the estate agent



Guide Price

£280,000

House

3 Bedrooms

EPC

35

Property floor plan & measurements



GROUND FLOOR

Lounge

17'10" x 11'6" (5.44m x 3.50m)

Dining Room

11'6" x 10'8" plus bay (3.51m x 3.25m plus bay)

Kitchen

10'3" x 8'9" (3.12m x 2.66m)

FIRST FLOOR

Bedroom 1

11'6" x 10'8" plus bay (3.51m x 3.25m plus bay)

Bedroom 2

11'10" x 11'6" (3.60m x 3.50m)

Bedroom 3

8'9" max x 6'8" max (2.67m max x 2.03m max)

Bathroom

10'7" max x 5'7" max (3.23m max x 1.70m max)

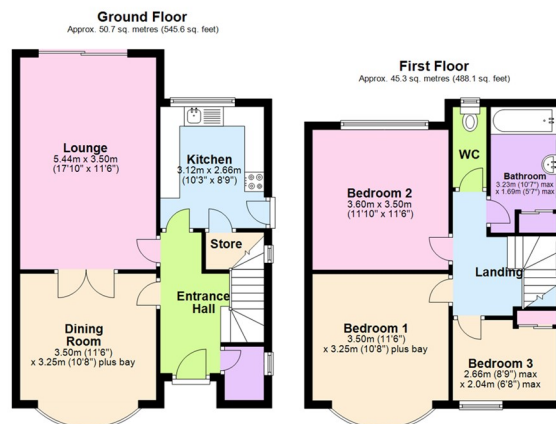
WC

6'9" x 2'10" (2.06m x 0.87m)

DISCLAIMERS

MARKETING MATERIALS

THIRD PARTY REFERRAL ARRANGEMENTS



Total area: approx. 96.0 sq. metres (1033.7 sq. feet)