



Mayfield Road, W12 9LU

A delightful first-floor studio apartment situated in this popular residential development within this pleasant residential area, local convenience shopping is close to hand whilst further afield are the more extensive shopping and restaurant facilities of both the Uxbridge Road and Chiswick's Main High Street. The accommodation provides spacious and bright studio room 20' x 17' with galley style modern fitted kitchen, fitted modern bathroom suite, entrance hall with storage cupboards, electric heating, and hot water, private designated parking space. Local transport links include Stamford Brook Tube Station (Piccadilly & District lines) numerous local bus routes with convenient vehicular access via A4/M4 central London, Heathrow & The West the property is available now, Furnished.

£1,000 Per Month

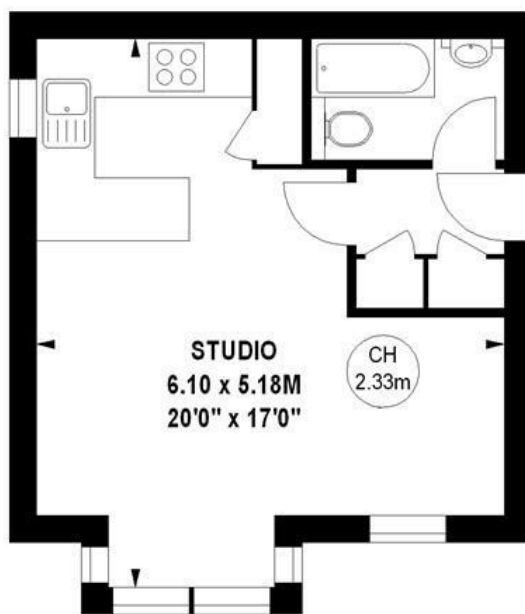
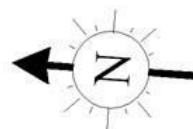
- Very pleasant modern development
- Great for transport links
- Spacious studio apartment
- Open plan living area
- Modern galley style kitchen
- Fitted bathroom
- Fitted storage
- Electric heating & Hot water
- Available Now
- Furnished

Mayfield Road, W12

Approximate gross internal area

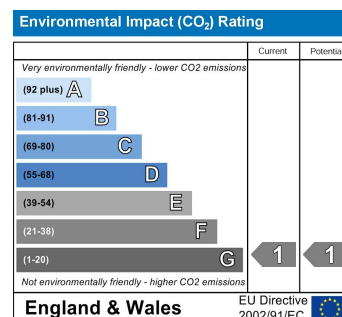
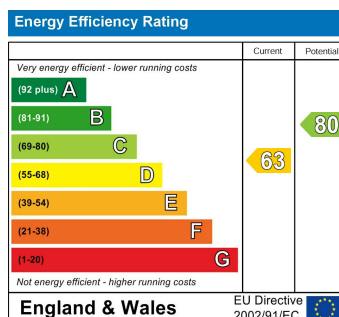
29.08 sq m / 313 sq ft

Key :
CH - Ceiling Height



First Floor

The floor plan is not to scale and measurements and areas shown are approximate and therefore should be used for illustrative purposes only. The plan has been prepared in accordance with the RICS code of Measuring Practice and whilst we have confidence in the information produced, it must not be relied on. If there is any aspect of particular importance, you should carry out or commission your own inspection of the property.
Copyright of FeaturePRO.



5-7 Turnham Green Terrace, Chiswick, London, W4 1RG

Tel 020 8747 8800

E-mail lettings@whitmanandco.com

Website www.whitmanandco.com

PrimeLocation.com

Zoopla.co.uk

rightmove

OnTheMarket.com