

105 Belle Vue Road ~ Southbourne ~ BH6 3DH

£800 PCM

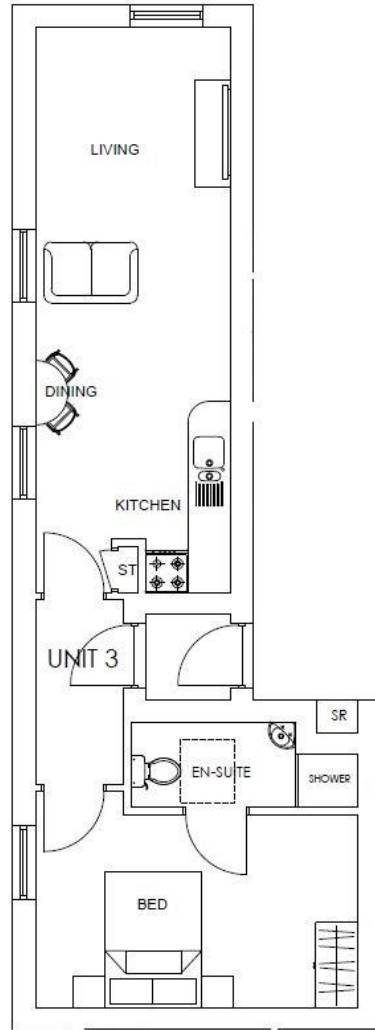


A rare opportunity to rent this immaculate 1 bedroom 1<sup>st</sup> floor contemporary apartment. Completed in 2018 and being only 1 of 7 available it is finished to an exceptional standard and decorated to a high specification throughout. This highly desirable apartment offers contemporary living featuring one double bedroom with fully tiled luxury separate shower room, open plan kitchen/living area with high specification integrated appliances, Amtico flooring to the living areas, carpeted bedroom and underfloor heating throughout. Further benefits include windows fitted with plantation shutters and one allocated off-road parking space. Available October 2019.

### Specification

One Double Bedroom  
Luxury Fully Tiled Shower Room  
Open Plan Kitchen/Living Area  
Contemporary Fitted Kitchen  
Underfloor Heating

One Allocated Parking Space  
Close to Southbourne High Street  
Walking Distance of Southbourne Beaches  
Available August 2020  
No Pets



**Apartment Size**  
452 Sq.FT (42 Sq.M)

### Situation

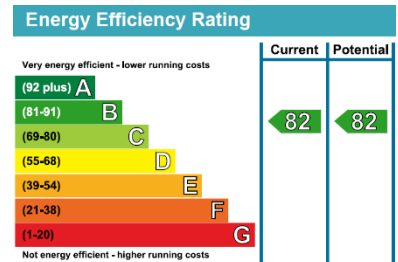
Located in the highly desirable area of Southbourne superbly situated a stone's throw away from its blue flag award winning beaches, close to Southbourne High Street with its many boutiques bars and restaurants and ideally located on main public transport routes to Bournemouth, Christchurch and surrounding areas.

### Local Authority and School catchments

Bournemouth Borough Council, Council Tax Band A

### Asking Price

£775 PCM Deposit £923



16 High Street - Christchurch - Dorset - BH23 1AY  
[www.jordanmarksestates.co.uk](http://www.jordanmarksestates.co.uk)  
[admin@jordanmarksestates.co.uk](mailto:admin@jordanmarksestates.co.uk)  
 01202 484444

**Disclaimer Property Details:** These particulars, whilst believed to be accurate are set out as a general outline only for guidance and do not constitute any part of an offer or contract. Intending purchasers should not rely on them as statements or representation of fact, but must satisfy themselves by inspection or otherwise as to their accuracy. We have not carried out a detailed survey nor tested the services, appliances and specific fittings. Room sizes should not be relied upon for carpets and furnishings. The measurements given are approximate. No person in this firms' employment has the authority to make or give any representation or warranty in respect of the property.