



01263 822373
arnoldskeys.com

3  2  1 

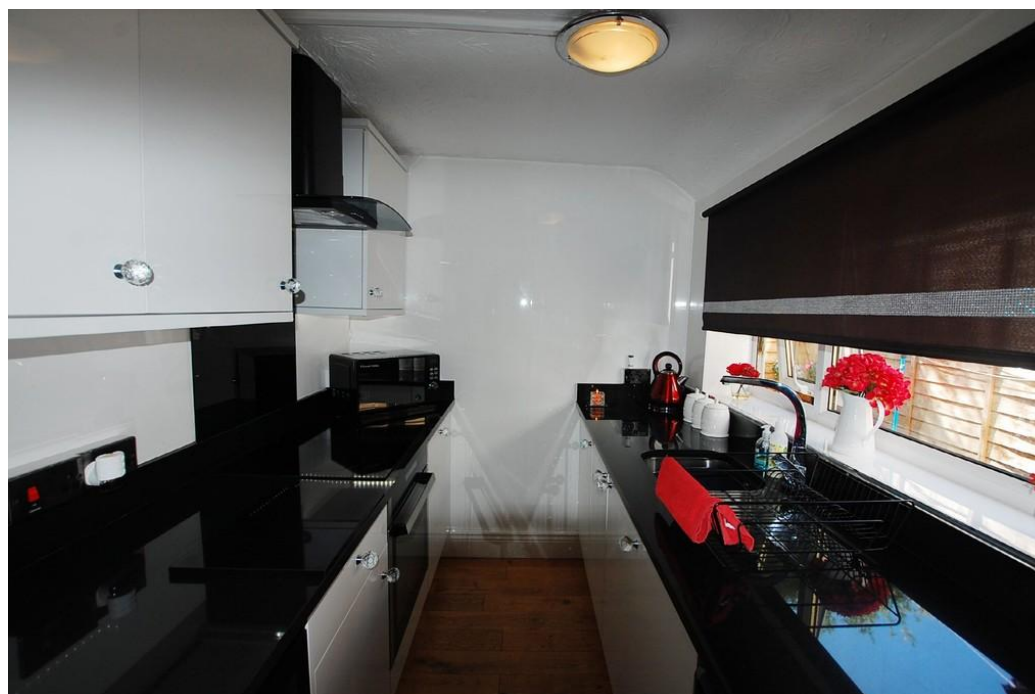
Harbord Road . Cromer . NR27 0BP

£200,000

IDEAL FAMILY HOUSE CLOSE TO SCHOOLS AND SHOPS,

A deceptively spacious and well presented mid terrace house offering three double bedrooms, office, two reception rooms, family bathroom, High gloss white fitted kitchen with granite sink and drainer. Solid wood oak flooring throughout the ground floor, electric radiator heating, double glazed windows and doors. enclosed courtyard garden, just minutes walk to the schools shops, town centre and beaches. Ideal family home.

Cromer is a historic fishermen's town which was mainly developed in the later half of the 19th century, with its Victorian streets the town consists of a large array of shops and amenities including a cinema, theatre, super markets, doctors surgery, hospital, schooling, gift shops, banks and boutiques. The Bittern train line also connects to Sheringham and Norwich with further links into London as well as a bus station which services the surrounding villages and towns.



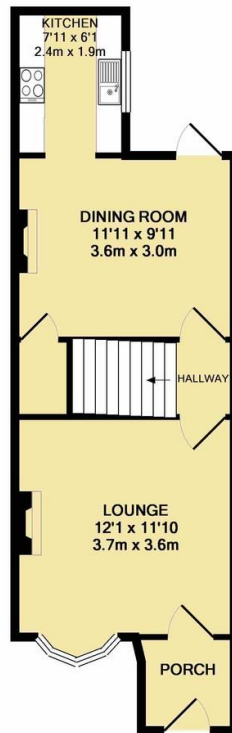
3 

2 

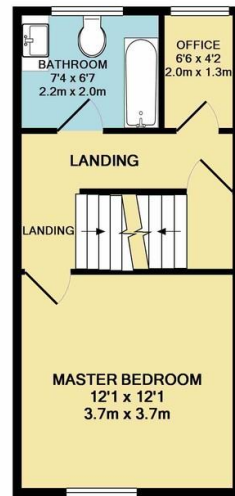
1 

Arnolds | Keys

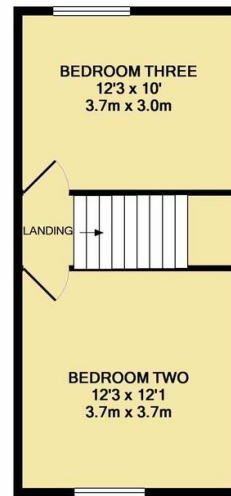




GROUND FLOOR
APPROX. FLOOR
AREA 394 SQ.FT.
(36.6 SQ.M.)



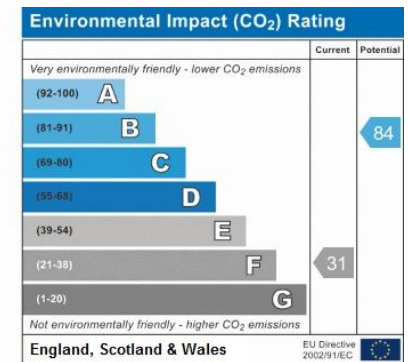
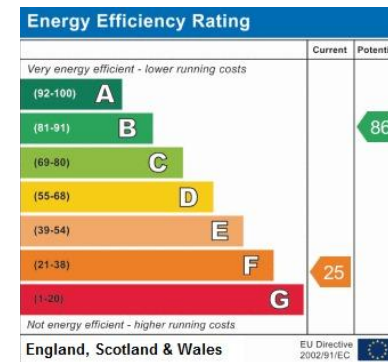
1ST FLOOR
APPROX. FLOOR
AREA 317 SQ.FT.
(29.5 SQ.M.)



2ND FLOOR
APPROX. FLOOR
AREA 319 SQ.FT.
(29.6 SQ.M.)

TOTAL APPROX. FLOOR AREA 1031 SQ.FT. (95.7 SQ.M.)

Whilst every attempt has been made to ensure the accuracy of the floor plan contained here, measurements of doors, windows, rooms and any other items are approximate and no responsibility is taken for any error, omission, or mis-statement. This plan is for illustrative purposes only and should be used as such by any prospective purchaser. The services, systems and appliances shown have not been tested and no guarantee as to their operability or efficiency can be given
Made with Metropix ©2017



Agents Note: Whilst every care has been taken to prepare these sales particulars, they are for guidance purposes only. All measurements are approximate and for general guidance purposes only and whilst every care has been taken to ensure their accuracy, they should not be relied upon and potential buyers are advised to recheck the measurements. Arnolds Keys refer sellers and buyers to various trusted firms for services associated with the home move process, for which in some cases a referral fee is paid to Arnolds Keys by the service provider. It is your decision whether you choose to deal with those firms. Arnolds Keys from time to time, recommends conveyancing services. Should you decide to use them we could receive a referral fee of up to £125. Arnolds Keys recommend Mortgage Advice Bureau (MAB) to sellers and buyer for mortgage advice. Should you decide to use MAB we would receive a referral fee of £200. Arnolds Keys recommend Hadley and Ottaway (H&O) for removal services. Should you decide to use H&O we would receive a referral fee of 10% of the net final invoice.



01263 822373
arnoldskeys.com

sheringham@arnoldskeys.com

Arnolds | Keys