



SMITHS
SALES & LETTINGS



85 St. Christophers Court, Swansea, SA1 1UD

Best Offers Over £160,000

CONTEMPORARY STYLED 2 BEDROOM GROUND FLOOR MARINA APARTMENT in IMMACULATE CONDITION. Centrally located in St. Christopher's Court, in close proximity to the MARINA & THE SWANSEA BAY SEAFRONT with ALLOCATED PARKING..

The property benefits from a quiet secure ground floor entrance hall and is also elevated to the road aspect, which makes for a quiet, private location. The kitchen is open plan to the living area which features dual aspect windows & juliet balcony doors. Contemporary laminate flows through the living areas and the master bedroom features an en-suite bathroom.

Make the most of RELAXED MARINA & BEACHFRONT LIVING whilst also being in close proximity to the CITY CENTER & the M4 for commuters.

An employee at Smiths Sales & Lettings has a vested interest in this property.

Walk through in 3DVR now!

www.smithshomes.com

Hallway

10'4" x 4'2" (3.17 x 1.28)



Comprising contemporary laminate flooring, radiator, intercom and airing cupboard.

Bathroom

7'2" x 5'1" (2.19 x 1.55)



Part tiled family bathroom with heated towel rail, bath, sink & WC.

Kitchen

11'3" x 8'1" (3.44 x 2.47)



Comprising a range of wall & base units, with worktops, stainless steel sink, integrated electric hob, extractor, cabinet mounted oven. Also features aluminium double glazed window, spotlight track overhead and contemporary laminate flooring - Open to the living area.

Living Room

17'9" x 10'11" (5.42 x 3.35)



Bright living space with dual aspect aluminium double glazed windows & juliet balcony doors. Also with contemporary laminate flooring, tv point and dual electric storage radiators - Open to the kitchen.

Bedroom One

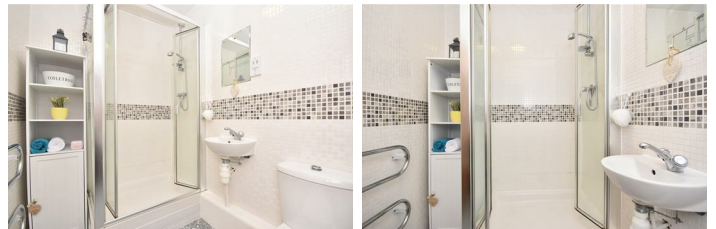
12'4" x 9'11" (3.77 x 3.04)



Master bedroom featuring juliet balcony doors, radiator, fitted carpet, cable/phone point and door to the en-suite bathroom.

En-Suite to Bedroom One

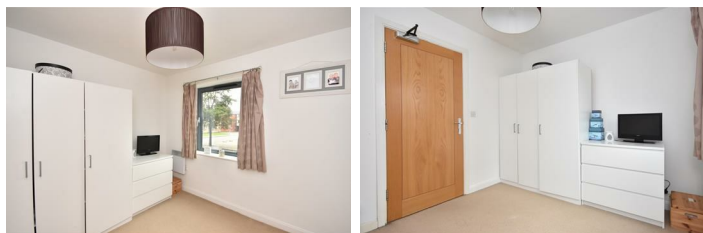
3'3" x 2'82"1" x 4'11" (1 x.86 x 1.52)



Beautifully presented en-suite with heated towel rail, double shower, sink & WC.

Bedroom Two

9'1" x 8'9" (2.77 x 2.68)



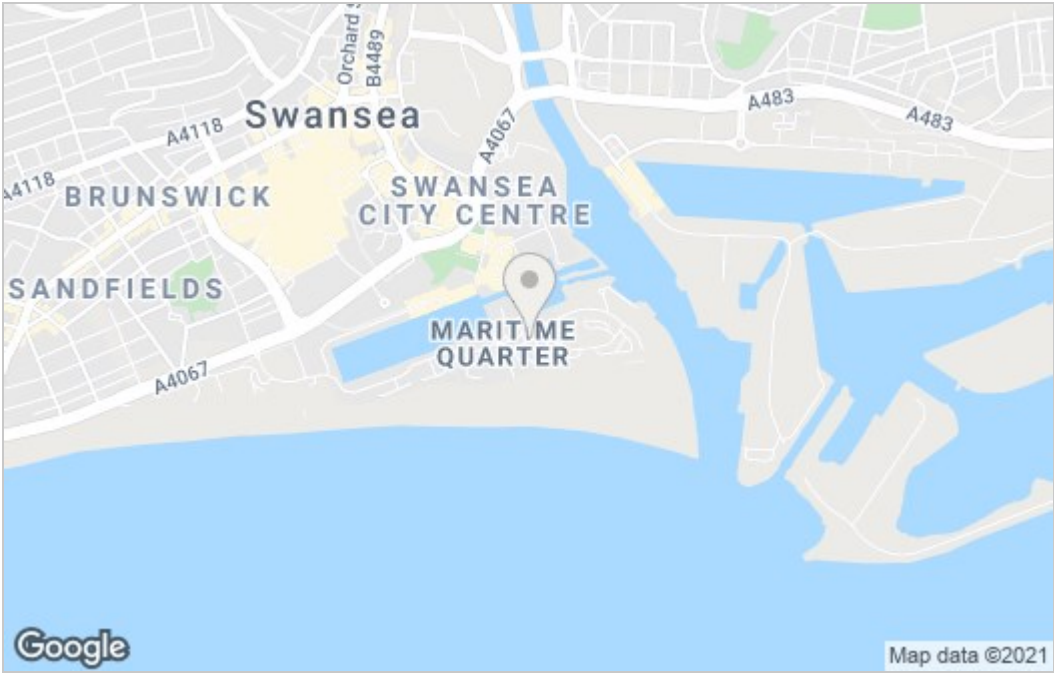
Double bedroom comprising tv point, radiator, fitted carpet & double glazed aluminium windows.

External

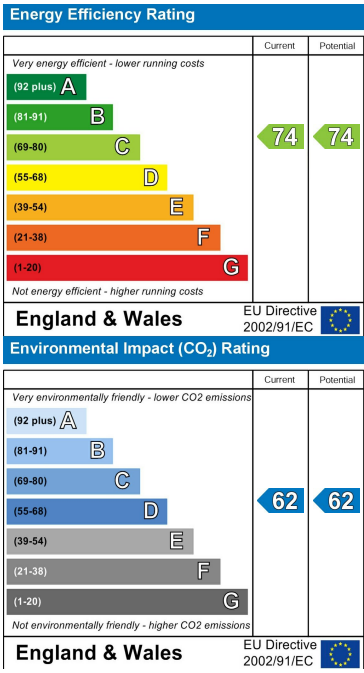


The property is located in St. Christopher's Court, with ground floor secure entrance and a parking space.

Area Map



Energy Efficiency Graph



Smiths Homes endeavour to maintain accurate depictions of properties in Virtual Tours, Floor Plans and descriptions, however, these are intended only as a guide and purchasers must satisfy themselves by personal inspection.

Unit 4, 270 Cockett Road, Swansea, SA2 0FN
T: 01792 465822 E: info@smithslettings.com

