

*tavistockbow*

**For Rent**



**People Make Places**



**King Street, Covent Garden WC2**

1 bedrooms | 538 sq ft

£775 pw





With tasteful & modern decor throughout, this one-bedroom apartment has beautiful characteristics including a feature fireplace. There is an open plan kitchen & the bedroom positioned at the rear with pretty views over the tranquillity of St Paul's Church Gardens. Available furnished in September.

#### What you need to know

- One bedroom
- One shower room
- 2nd floor
- No lift
- Beautiful feature fireplace
- Furnished
- Modern
- Comfort cooling
- Available beginning of September
- Close to Covent Garden tube



**King Street, Covent Garden WC2**



### Overview

Positioned just off the Piazza, this stunning apartment is situated on the second floor of a period building on King Street (walk-up), which is renowned for its choice of boutiques and restaurants. Contemporary and comfort are paramount in the apartment's overall aesthetic with luxury furnishings and comfort cooling. The double bedroom also boasts a quiet sleeping environment due to its location at the back of the apartment.

Residential occupiers on the Estate benefit from a complimentary membership of Covent Garden Lifestyle Services, helping take the stress out of everyday life. A weekly digital magazine features all the latest news and updates on the estate as lockdown measures begin to ease and a dedicated lifestyle manager is on hand to advise on anything from regular cleaning and fresh flowers, to the best online fitness instructors, personal chefs and nutritionists as well as booking tables at London's top restaurants.



# People Make Places

London is collection of inspiring urban villages and one of the most exciting places in the world to live, work & play.

We work with both property owners and their occupiers, sharing the story of these vibrant neighbourhoods, conveying the unique soul & energy to future custodians, the people who'll keep them buzzing.

And unlike many real estate businesses we're not just about buildings, because streets & buildings don't make a neighbourhood.

We're about building relationships, because **people make places**.

MISINTERPRITATION ACT (COPYRIGHT) DISCLAIMER: Tavistock Bow Ltd for themselves and for the vendor(s) of this property whose agents they are, given notice that: 1. These particulars do not constitute, not constitute any part of, an offer or contract. 2. None of the statements contained in these particulars as to the property are to be relied on as statements or representations of fact. 3. Any intending purchaser or lessee must satisfy themselves by inspection or otherwise as to the correctness of each of the statements contained in these particulars. 4. The vendor(s) or lessor(s) do not make or give and neither Tavistock Bow Ltd nor any person in their employment has any authority to make or give any representation or warranty whatever in relation to this property. Finance Act 1989, Unless otherwise stated all prices and rents are quote exclusive of VAT. Property Misrepresentation Act 1991; These details are believed to be correct at the time of compilation but may be subject to subsequent amendment.

Follow us:     @tavistockbow

| Score | Energy rating | Current | Potential |
|-------|---------------|---------|-----------|
| 92+   | A             |         |           |
| 81-91 | B             |         | 84 B      |
| 69-80 | C             | 78 C    |           |
| 55-68 | D             |         |           |
| 39-54 | E             |         |           |
| 21-38 | F             |         |           |
| 1-20  | G             |         |           |

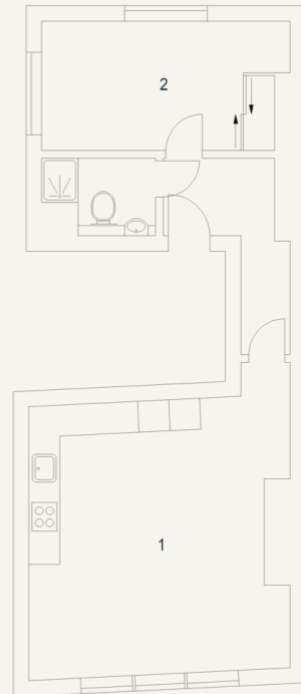
King Street, WC2

Approximate Gross Internal Area 50 sq m / 538 sq ft

Second Floor

1 Kitchen /  
Reception  
Room  
5.27 x 5.06M  
17'3" x 16'7"

2 Bedroom  
4.86 x 2.48M  
15'11" x 8'2"



Floor Plan produced for Tavistock Bow by Mays Floorplans © . Tel 020 3397 4594  
Illustration for identification purposes only, not to scale.

**tavistockbow**

21 New Row, Covent Garden,  
London, WC2N 4LE

t: 020 7477 2177  
e: hello@tavistockbow.com  
w: tavistockbow.com



**King Street, Covent Garden WC2**