

*tavistockbow*

**For Rent**



**People Make Places**



**Rupert Court, Chinatown W1**

2 bedrooms | 872 sq ft

£790 pw





This two bedroom flat is situated on the 2nd floor of a building tucked away on a popular walkway in Chinatown. The property features a large open plan kitchen, master bedroom with built in storage and en-suite bathroom and a large 2nd bedroom and guest shower room. Available immediately unfurnished.

#### What you need to know

- Two bedrooms
- Two bathrooms
- Second floor (no lift)
- Modern finish
- Wooden flooring throughout
- Unfurnished
- Open plan kitchen
- Great storage
- Available immediately
- Close to Piccadilly Circus and Leicester Square underground stations





### Overview

This two bedroom apartment was refurbished to a high standard with a contemporary finish throughout. Both bedrooms are a good size and the modern bathrooms have rainfall showers. The apartment is moments away from many fantastic restaurants and both Soho and Covent Garden are a short walk away.

The apartment is available immediately on an unfurnished basis. Subject to contract and satisfactory references, the landlord offers a three-year lease with a mutual rolling six-month break clause. Westminster City Council tax band: G.



# People Make Places

London is collection of inspiring urban villages and one of the most exciting places in the world to live, work & play.


We work with both property owners and their occupiers, sharing the story of these vibrant neighbourhoods, conveying the unique soul & energy to future custodians, the people who'll keep them buzzing.

And unlike many real estate businesses we're not just about buildings, because streets & buildings don't make a neighbourhood.

We're about building relationships, because **people make places**.

MISINTERPRITATION ACT [COPYRIGHT] DISCLAIMER: Tavistock Bow Ltd for themselves and for the vendor(s) of this property whose agents they are, given notice that: 1. These particulars do not constitute, not constitute any part of, an offer or contract. 2. None of the statements contained in these particulars as to the property are to be relied on as statements or representations of fact. 3. Any intending purchaser or lessee must satisfy themselves by inspection or otherwise as to the correctness of each of the statements contained in these particulars. 4. The vendor(s) or lessor(s) do not make or give and neither Tavistock Bow Ltd nor any person in their employment has any authority to make or give any representation or warranty whatever in relation to this property. Finance Act 1989, Unless otherwise stated all prices and rents are quote exclusive of VAT. Property Misrepresentation Act 1991; These details are believed to be correct at the time of compilation but may be subject to subsequent amendment.

Follow us:     @tavistockbow

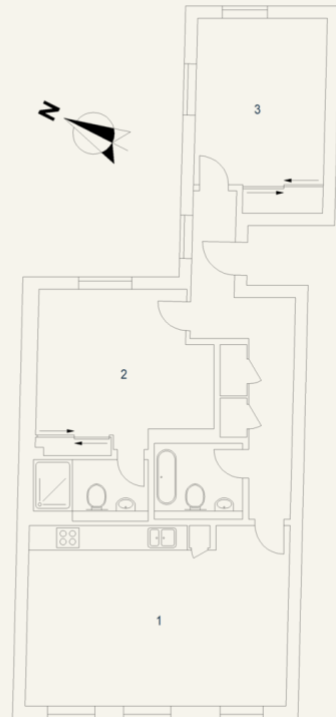
Energy Efficiency Rating		Current	Potential
<i>Very energy efficient - lower running costs</i>			
(92-100) <b>A</b>			
(81-91) <b>B</b>			
(69-80) <b>C</b>			
(55-68) <b>D</b>		68	68
(39-54) <b>E</b>			
(21-38) <b>F</b>			
(1-20) <b>G</b>			
<i>Not energy efficient - higher running costs</i>			
England, Scotland & Wales		EU Directive 2002/91/EC	

## Rupert Court, W1D

Approximate Gross Internal Area 81 sq m / 872 sq ft

Second Floor

- 1 Reception Room  
6.33 x 4.44M  
20'9" x 14'7"
- 2 Bedroom  
4.33 x 4.12M  
14'2" x 13'6"
- 3 Bedroom  
4.79 x 3.17M  
15'9" x 10'5"



Floor Plan produced for Tavistock Bow by Mays Floorplans ©. Tel 020 3367 4594  
Illustration for identification purposes only, not to scale.

**tavistockbow**

21 New Row, Covent Garden,  
London, WC2N 4LE

t: 020 7477 2177  
e: hello@tavistockbow.com  
w: tavistockbow.com



**Rupert Court, Chinatown W1**