



MILES ESTATE AGENTS

**35 Station Green Bishops Lydeard
Taunton TA4 3DL**



A well presented modern 3 bedroom semi detached house with refitted kitchen, utility room and pretty enclosed garden on this popular development next to the West Somerset Railway in Bishops Lydeard. Good size lounge, garage and off road parking - early viewing recommended.





Features:

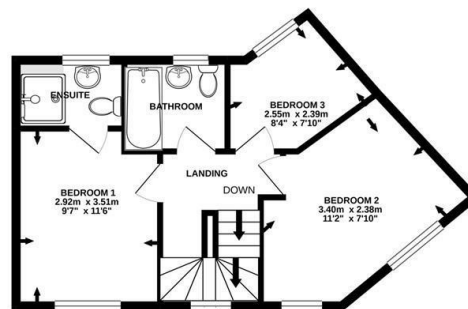
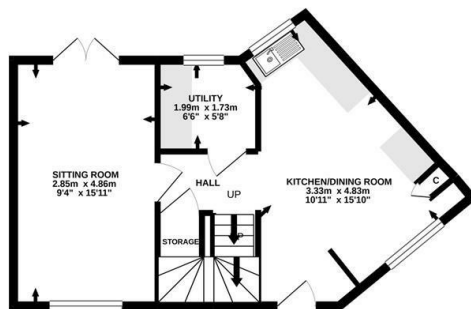
- Kitchen/Dining Room
- Spacious Sitting Room
- Utility Room
- Master Bedroom with En Suite
- 2 Further Bedrooms
- Family Bathroom
- Pretty Enclosed Garden
- Single Garage
- Off Road Parking
- Council Tax Band C



GARAGE
16.0 sq.m. (172 sq.ft.) approx.

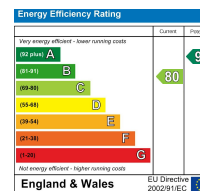
GROUND FLOOR
38.8 sq.m. (417 sq.ft.) approx.

1ST FLOOR
38.7 sq.m. (417 sq.ft.) approx.



TOTAL FLOOR AREA : 93.5 sq.m. (1007 sq.ft.) approx.

Made with Metropix ©2020



Viewings strictly through the selling agents:

Miles Estate Agents

2 Piffin Lane, Bishops Lydeard, Taunton,
Somerset, TA4 3AS

Tel: 01823 470 500

lydeard@milesestateagents.co.uk

www.milesestateagents.co.uk

rightmove

Zoopla.co.uk

onTheMarket.com

MILES ESTATE AGENTS

