



15 Ratcliffe Road

Haydon Bridge, Hexham, NE47 6ER

youngsRPS 

**15 Ratcliffe Road
Haydon Bridge
Hexham
NE47 6ER**

Guide Price: £189,000

Charming mid terracestone build three-bedroom property pleasantly situated in the popular village of Haydon Bridge.

- Stone built
- Mid terrace
- Three bedrooms
- Garden
- Double glazing
- Popular village location
- Open plan kitchen dining
- Energy efficiency rating D (58)

youngsRPS 

Youngs Hexham 01434 608980

www.youngsrps.com





DESCRIPTION

Charming mid terrace stone built three bedroom property pleasantly situated in the popular village of Haydon Bridge.

The beautiful property comprises of entrance hall leading into the spacious living room which enjoys noteworthy characterful features such as beamed ceilings and an inglenook fireplace housing a multi fuel stove. Doors from the lounge then lead into the spacious open plan kitchen/dining room which is fitted with a range of wall and floor shaker style units incorporating a stainless steel double sink with mixer tap over, integrated dishwasher, electric hob with extractor hood above, seating area and window looking out onto the garden. There is also a door leading into a useful porch area.

On the first floor there are three bedrooms and a bathroom. The main bedroom is fitted with modern wardrobes providing hanging and shelving space. The bathroom comprises of a bath with overhead shower, WC and sink set within a vanity unit.

Externally to the rear the property has a pleasant garden with patio area with well-established borders and shrubs, summer house, garden shed, outhouse and WC, coal and log store. The property benefits from resident fishing rights, UPVC double glazing and solid fuel central heating.

LOCATION

Haydon Bridge is a popular village with many local amenities including a small supermarket and post office, newsagents, pharmacy, hair and beauty salon, social club and public houses. The village benefits from two great schools, Shaftoe Trust Academy and Haydon Bridge High School.

The village is ideal for commuting east to Newcastle and west to Carlisle due to its proximity to the A69, there is also railway station and regular bus services.

SERVICES

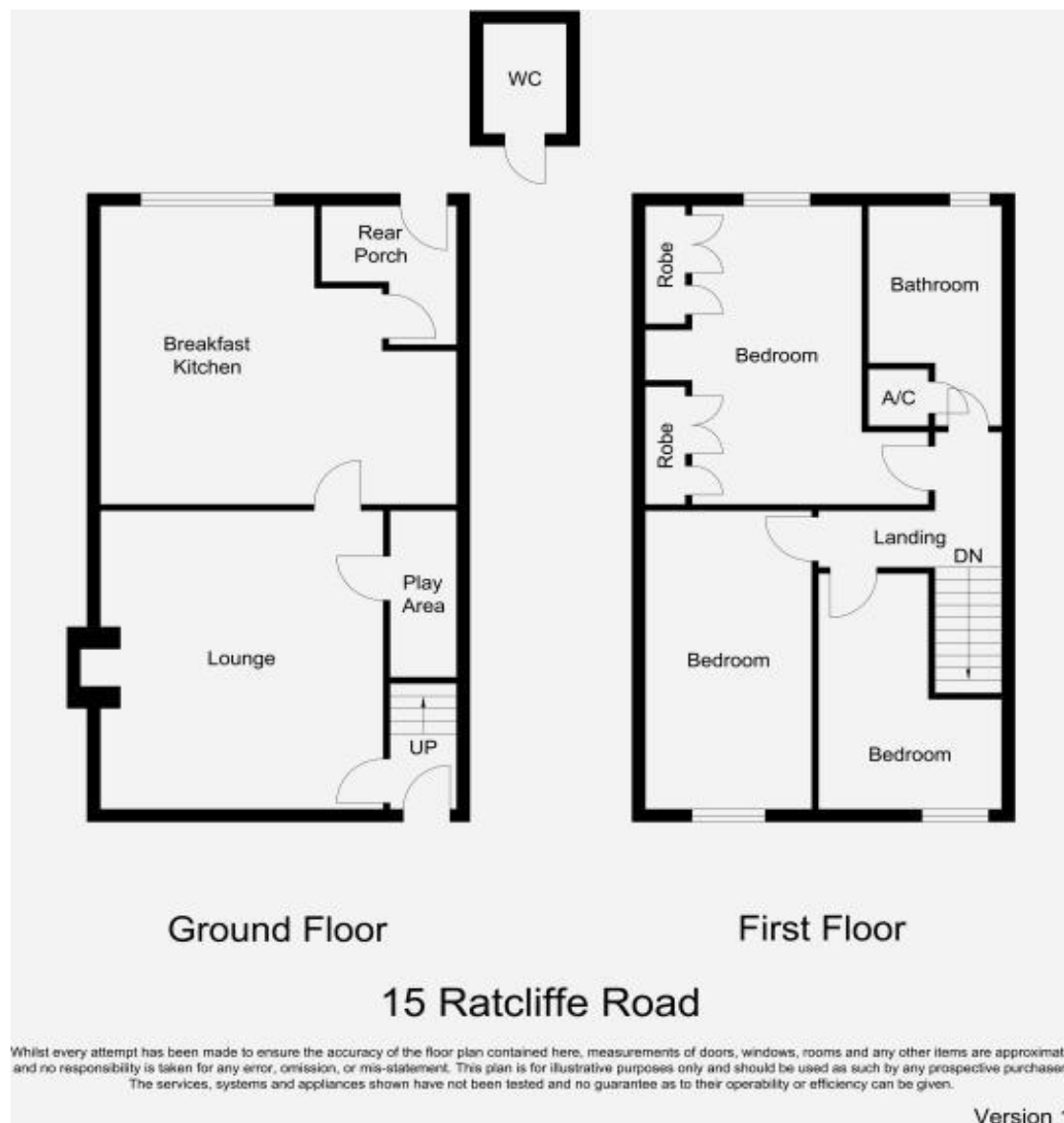
Mains electricity, water and drainage are connected. Heating is via the multi fuel stove which also supplies the domestic hot water.

CHARGES

Northumberland County Council tax band B

VIEWINGS

Viewing is strictly by appointment. Arrangements can be made by contacting YoungsRPS, Hexham on 01434 608980.



IMPORTANT NOTE: Consumer Protection from Unfair Trading Regulations 2008 and the Business Protection from Misleading Marketing Regulations 2008: We endeavour to make our sales particulars accurate and reliable. They should be considered as general guidance only and do not constitute all or any part of the contract. None of the services, fittings and equipment have been tested. Measurements, where given, are approximate and for descriptive purposes only. Boundaries cannot be guaranteed and must be checked by solicitors prior to exchange of contracts. Prospective buyers and their advisers should satisfy themselves as to the facts, and before arranging an inspection, availability. Further information on points of particular importance can be provided. No person in the employment of YoungsRPS (NE) Ltd has any authority to make or give any representation or warranty whatever in relation to this property.



R201

Hexham
Priestpopple, Hexham,
Northumberland, NE46 1PS
T: 01434 608980 / 609000
hexham@youngs-rps.com

Newcastle
23 Grey Street,
Newcastle, NE1 6EE
T: 0191 2610300
newcastle@youngs-rps.com

Alnwick
31-33 Bondgate Within,
Alnwick, NE66 1SX
T: 01665 606800
alnwick@youngs-rps.com

Sedgefield
50 Front Street, Sedgefield,
Co. Durham, TS21 2AQ
T: 01740 622100 / 617377
sedgefield@youngs-rps.com

Northallerton
80-81 High Street, Northallerton,
North Yorkshire, DL7 8EG
T: 01609 773004 / 781234
northallerton@youngs-rps.com

Dumfries
Lochar House, Heathhall,
Dumfries DG1 3NU
T: 01387 402277
dumfries@youngs-rps.com