

Nicholas James



- Three Bedrooms
- Ground Floor Extension
- Front & Rear Gardens
- Quiet Cul-De-Sac Location

Wenceling Cottages, Lancing, BN15 8LE

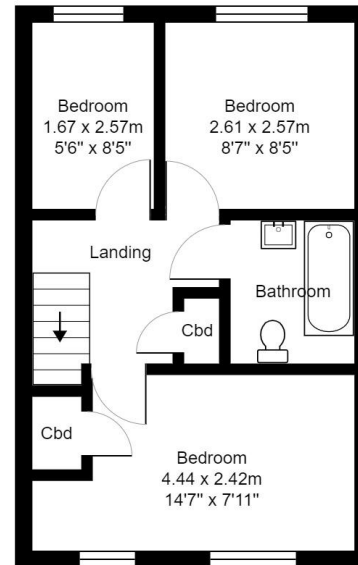
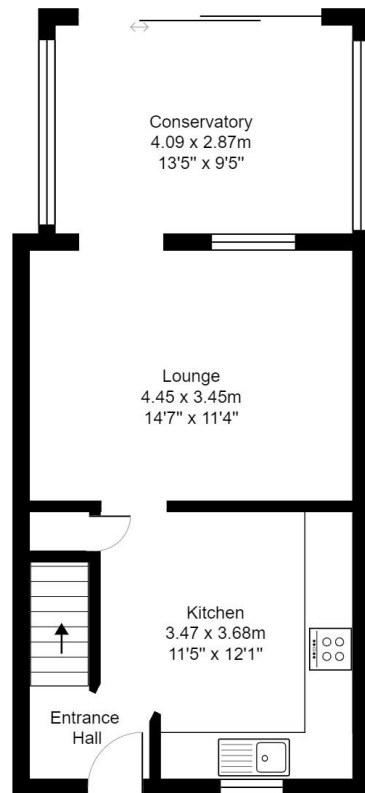
Guide Price £325,000 - £340,000

Superb end of terrace family home located in a lovely quiet cul-de-sac on the Lancing & Shoreham border. This well presented property has been modernised and extended in recent years and offers bright and spacious accommodation comprising of; three bedrooms, bathroom, modern kitchen and good sized lounge opening into the conservatory creating a fantastic living space. Outside there is a low maintenance front garden and a delightful lawn rear garden with patio area creating space for table and chairs.

This quiet position will appeal to many being within easy reach to popular shops, cafes and restaurants on Shoreham high street along with local schools and easy access to surrounding areas. The beach is close by and commuters will find Shoreham & Lancing mainline stations with regular links to Brighton and London close by.



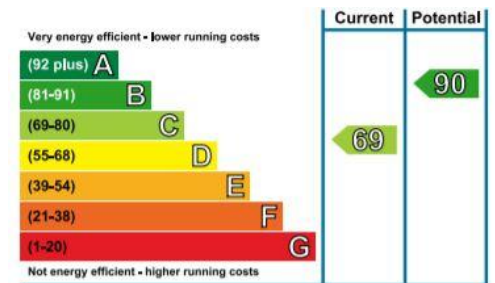




Wenceling Cottages

Total Area: 77.5 m² ... 834 ft²

All measurements are approximate and for display purposes only.



Nicholas
James

www.nicholasjamesproperty.co.uk

01273 917915

hello@nicholasjamesproperty.co.uk

Agents Note: Whilst every care has been taken to prepare these sales particulars, they are for guidance purposes only. All measurements are approximate are for general guidance purposes only and whilst every care has been taken to ensure their accuracy, they should not be relied upon and potential buyers are advised to recheck the measurements

