

ENTRANCE HALLWAY External door, double glazed window to front aspect, radiator, coving, stairs to first floor, engineered oak wood flooring, doors to downstairs cloakroom and dining room.

DOWNSTAIRS CLOAKROOM Two piece suite comprising low level w.c, wash basin, radiator, extractor fan, engineered oak wood flooring.

KITCHEN 8' 2" x 7' 8" (2.51m x 2.34m) Range of matching base and wall mounted units with worksurfaces over, integrated fridge/freezer, integrated dishwasher, built in electric cooker with induction hob and extractor hood over, coving, engineered oak wood flooring.

LIVING ROOM 14' 4" x 15' 5" (4.38m x 4.72m) Double glazed door to rear courtyard garden, double glazed sash window to rear aspect overlooking the garden, coving, three radiators, built in storage cupboard, engineered oak wood flooring.

GARAGE Electric up and over door, combination gas boiler, space and plumbing for washing machine, power connected.

FIRST FLOOR LANDING Built in cupboard, doors to bedrooms and bathroom.

BEDROOM ONE 12' 9" x 11' 11" (3.89m x 3.64m) Two double glazed sash windows to front aspect, two double built in wardrobes, radiator, built in cupboard, coving, door to en-suite.

EN-SUITE Obscured double glazed window to side aspect, three piece suite comprising fully tiled corner shower cubicle, low level w.c, pedestal wash basin, heated towel rail.

BATHROOM Three piece suite comprising panel enclosed bath, pedestal wash basin, low level w.c, radiator, extractor fan, coving.

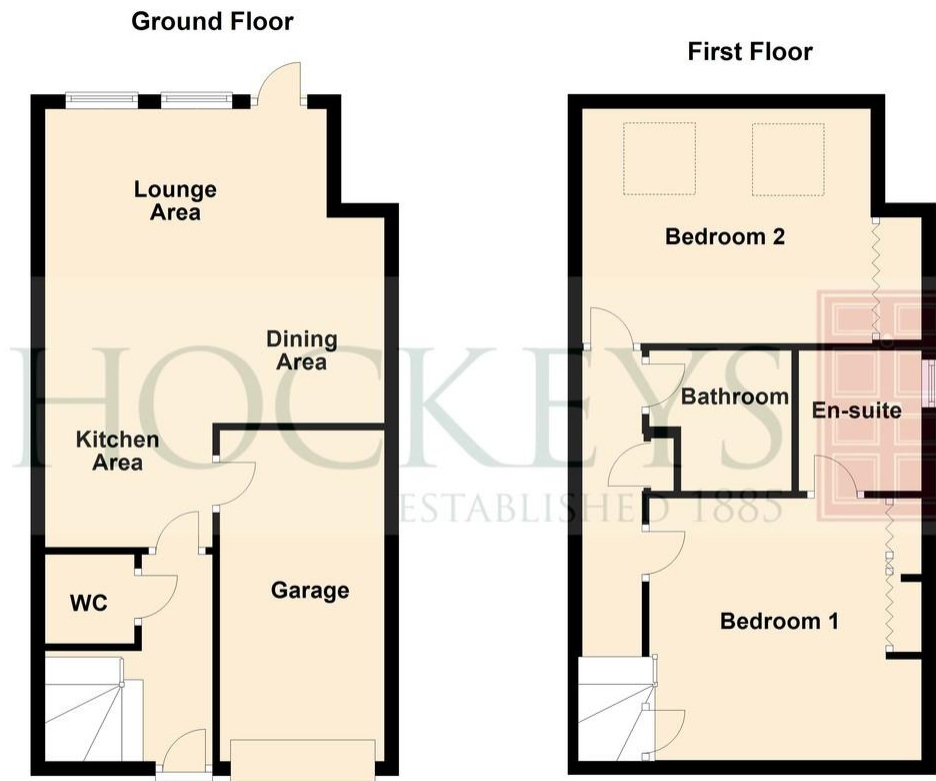
BEDROOM TWO 13' 8" x 10' 8" (4.19m x 3.27m) Two double glazed velux windows to rear aspect, wardrobe storage space, radiator.

OUTSIDE There is gated side access leading into the fully enclosed courtyard rear garden.



AGENT NOTES The garage is not allowed to be converted into living space as per the title deeds and the property does not come with a parking permit.





6 Fisher Street, Cambridge

IMPORTANT: Hockeys (Willingham) Ltd for themselves and for the vendors or lessors of this property whose agents they are give notice that the particulars are produced in good faith and are set out as a general guide only and do not constitute any part of a contract and no person in the employment of Hockeys (Willingham) Ltd has any authority to make or give any representation or warranty in relation to this property .

10 Mill Road CB1 2AD
Telephone: 01223 356054
Email: cambridge@hockeys.co.uk

www.hockeys.co.uk

HOCKEYS
ESTABLISHED 1885





6 Fisher Street, Cambridge, CB4 3DJ

£525,000 Freehold

An opportunity to own a detached two double bedroom home with a garage that is situated just a few minutes walk from the ever-popular Jesus Green Park. This with open plan living downstairs and two double bedrooms with a bathroom and ensuite to the master bedroom, this really is a fantastic buy.



HOCKEYS
ESTABLISHED 1885

