



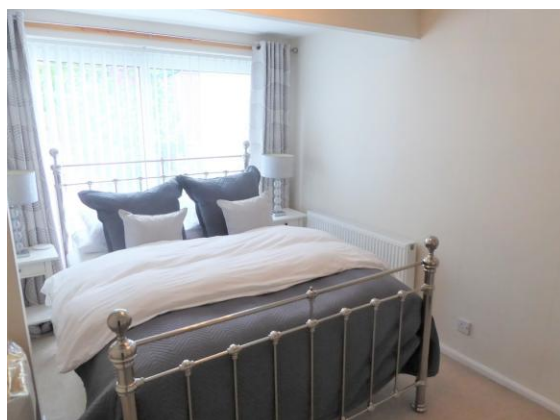
HomeBuyers
PROPERTY SERVICES

CHERRY TREE DRIVE, FARSLEY LS28 5SP

£900 PCM



Semi Detached Bungalow
Three Bedrooms Two En Suite
Lounge And Dining Room
Modern Fitted Kitchen
White Three Piece Main Bathroom
Gardens And Garage
Double Glazing. Central Heating
Part Furnished
Deposit £1,038
Available 01/09/2020



£900 PCM**GENERAL DESCRIPTION**

A three bedroom (two en suite) semi-detached dormer bungalow situated in a residential area of the sought after village of Farsley. Will be of particular interest to professionals seeking accommodation presented to a high standard throughout and benefiting from; white Upvc double glazing; lawned gardens; two reception rooms and conservatory including leather sofa; modern fitted kitchen; white three piece house bathroom; gas central heating with combination boiler; long drive and garage. Briefly comprises: entrance hall; lounge; dining room; conservatory; kitchen including integral fridge, integral freezer, integral dishwasher and washing machine; ground floor double bedroom three; ground floor house bathroom; staircase and landing; two double bedrooms including four bedside cabinets, two wardrobes and one set of drawers, both with en suite shower rooms. Offers good commuting access to both Leeds and Bradford and an early inspection is recommended to appreciate the size, style and versatility of the accommodation on offer. Sorry no smokers. Sorry no pets. Available 01/09/2020. Part furnished. Deposit £1,038.

ROOM MEASUREMENTS**LOUNGE** 14' 11" x 10' 11" (4.55m x 3.33m)**DINING ROOM** 11' 8" x 10' 11" (3.56m x 3.33m)**KITCHEN** 10' 9" x 8' 9" (3.28m x 2.67m)**CONSERVATORY** 9' 11" x 9' 5" (3.02m x 2.87m)**GROUND FLOOR BEDROOM** 14' 9" x 8' 10" (4.5m x 2.69m)max**GROUND FLOOR BATHROOM** 5' 11" x 5' 5" (1.8m x 1.65m)**STAIRCASE AND LANDING** 7' 6" x 3' 11" (2.29m x 1.19m)max**DOUBLE BEDROOM ONE** 13' 1" x 11' 6" (3.99m x 3.51m)max**BEDROOM ONE EN SUITE** 10' 1" x 4' 1" (3.07m x 1.24m)**DOUBLE BEDROOM TWO** 15' 6" x 7' 10" (4.72m x 2.39m)**BEDROOM TWO EN SUITE** 7' 11" x 4' 3" (2.41m x 1.3m)**HOLDING DEPOSIT**

A holding deposit equal to one week's rent as agreed will be due upon application for this property before it is removed from the market.

Upon the successful completion of your background checks the holding deposit will be placed on your tenancy account as a part payment of the first month's rent instalment.

Should all information on the application forms be found to be accurate and yet the landlord chooses not to grant a tenancy then the holding deposit will be returned in full.



Details are compiled from observation and information supplied by the vendors. Measurements have been taken with an electronic measure and, whilst believed to be accurate, may be subject to variation or mechanical error. Services and appliances have had only a visual inspection and have not been tested by HomeBuyers.