



MILES ESTATE AGENTS

**Penchurian 3 Orchard Drive
Bishops Hull Taunton TA1 5ES**



A well presented and modernised detached chalet bungalow, peacefully situated in a private lane in much favoured Bishops Hull. 3 double bedrooms, refitted bathroom and shower room, fabulous kitchen and good size gardens. Early viewing highly recommended and no onward chain.





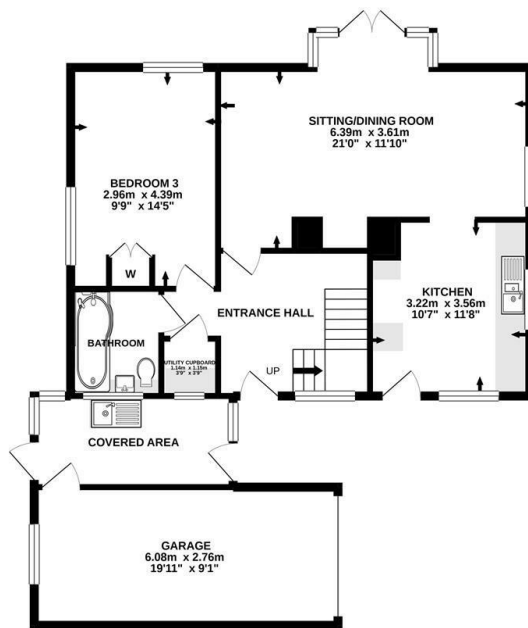
- ### Features
- Reception Hall
 - Spacious Sitting/Dining Room
 - Fabulous Refitted Kitchen with Range Cooker
 - Ground Floor Double Bedroom and Refitted Bathroom
 - Utility Cupboard
 - 2 Further Double Bedrooms
 - Brand New Shower Room
 - Lovely Wraparound Gardens
 - Garage & Parking for Several Cars
 - Council Tax Band D
 - Immediate Vacant Possession
 - No Onward Chain





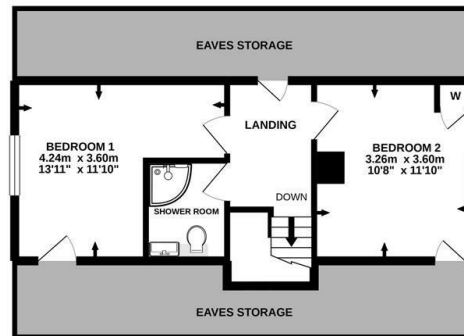


GROUND FLOOR
85.4 sq.m. (919 sq.ft.) approx.



TOTAL FLOOR AREA : 119.0 sq.m. (1281 sq.ft.) approx.
Made with Metropix ©2020

1ST FLOOR
33.6 sq.m. (362 sq.ft.) approx.



Energy Efficiency Rating		
	Current	Potential
Very energy efficient - lower running costs		
(92 plus) A		83
(81-91) B		
(69-80) C		
(55-68) D		
(39-54) E	46	
(21-38) F		
(1-20) G		
Not energy efficient - higher running costs		
England & Wales	EU Directive 2002/91/EC	



Viewings strictly through the selling agents:

Miles Estate Agents

2 Piffin Lane, Bishops Lydeard, Taunton,

Somerset, TA4 3AS

Tel: 01823 470 500

lydeard@milesestateagents.co.uk

www.milesestateagents.co.uk



rightmove

Zoopla.co.uk

OnTheMarket.com

MILES ESTATE AGENTS

