



Jordanfishwick

Century Buildings



Century Buildings, M3 2DD

Price £230,000



The Property

CASH BUYERS ONLY! Virtual viewing available - <https://www.youtube.com/watch?v=HMMMk74PbuE>

Jordan Fishwick are pleased to offer for sale this one bedroom apartment on the 1st floor of the Edwardian building of Century Buildings, St Marys Parsonage. The development combines a mixture of modern interiors with the existing fabric of the Grade II listed National Building to create a characterful development in the heart of Central Manchester. The listed building and its 1960's extension were converted and combined into one residential development. The apartment briefly comprises of: entrance hall with two storage cupboards, open plan living room/kitchen, balcony over

looking the river, bedroom and well appointed bathroom. There is also a parking space included and 24 hour concierge.

Directions

Century Buildings is located just a stones throw away from Deansgate and Spinningfields and is known as one of the most luxurious developments in the area.

- CASH BUYERS ONLY!
- One Bedroom Apartment
- First Floor
- River Views
- Large Open Plan Living Area
- 24hr Concierge
- Balcony
- Pet Friendly
- Secure Parking Space

Postcode - M3 2DD

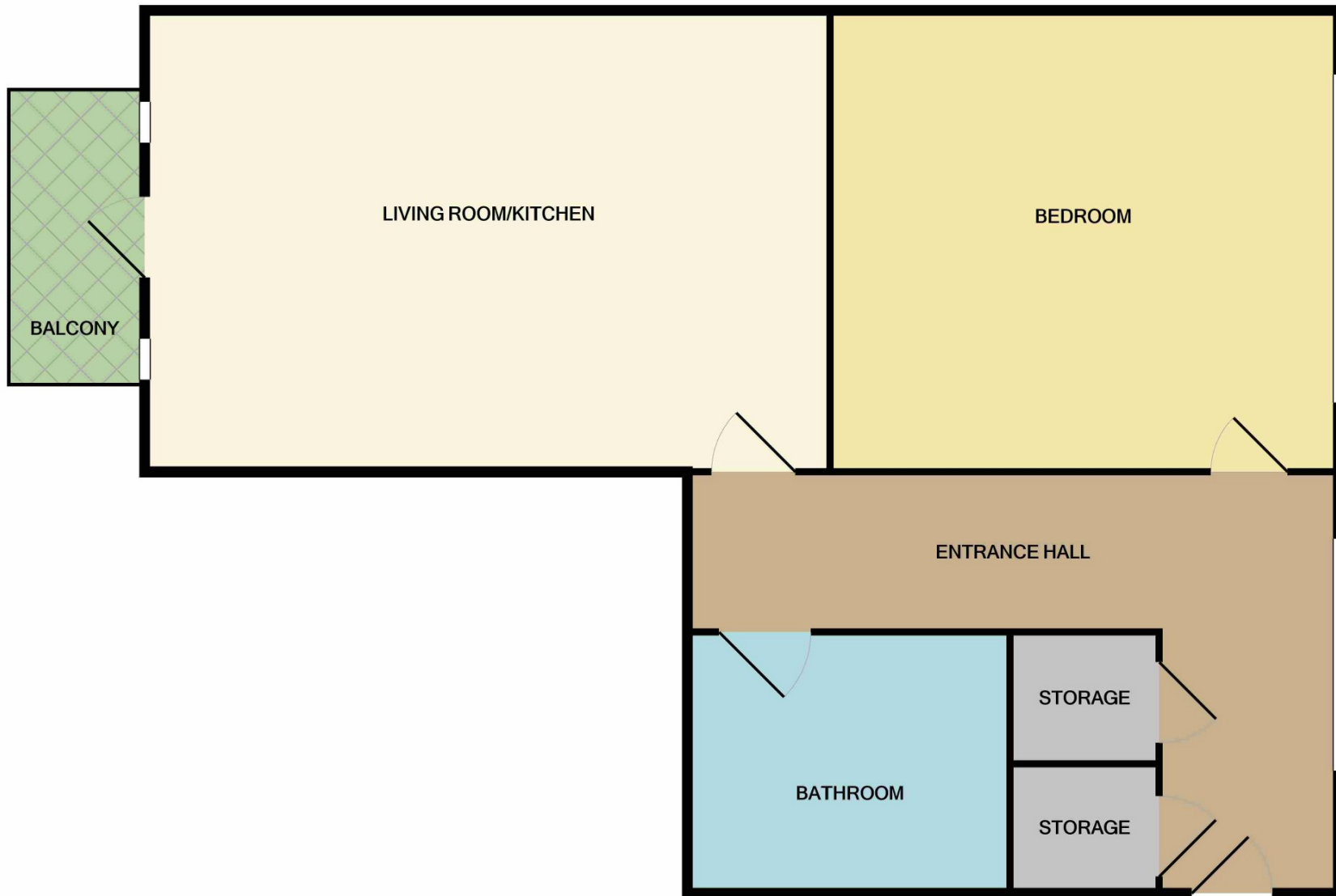
EPC Rating - C

Floor Area - sq ft

Local Authority - Manchester Council

Council Tax - Band E





Measurements are approximate. Not to scale. Illustrative purposes only
 Made with Metropix ©2020



These particulars are believed to be accurate but they are not guaranteed and do not form a contract. Neither Jordan Fishwick nor the vendor or lessor accept any responsibility in respect of these particulars, which are not intended to be statements or representations of fact and any intending purchaser or lessee must satisfy himself by inspection or otherwise as to the correctness of each of the statements contained in these particulars. Any floorplans on this brochure are for illustrative purposes only and are not necessarily to scale.

Offices also at:
 Chorlton | Didsbury | Disley | Glossop | Hale | Macclesfield | Manchester | Sale | Wilmslow | Withington

68 The Arches, Whitworth Street West, Manchester, M1

0161 833 9499

manchester@jordanfishwick.co.uk

www.jordanfishwick.co.uk