



1 Beeston Road, Handforth, Wilmslow, Cheshire, SK9 3SA

mosley jarman

1 Beeston Road, Handforth, Wilmslow, Cheshire, SK9 3SA

£105,000

- Modern, two bed apartment within close proximity to Handforth Village
- Close to transport links to Manchester Airport and the A34 bypass
- Large living/dining room (13'7 x 23'9)
- Two double bedrooms
- Allocated parking
- Communal gardens and refuse area
- EPC grade C
- 75% shared equity



1 Beeston Road, Handforth, Wilmslow, Cheshire, SK9 3SA

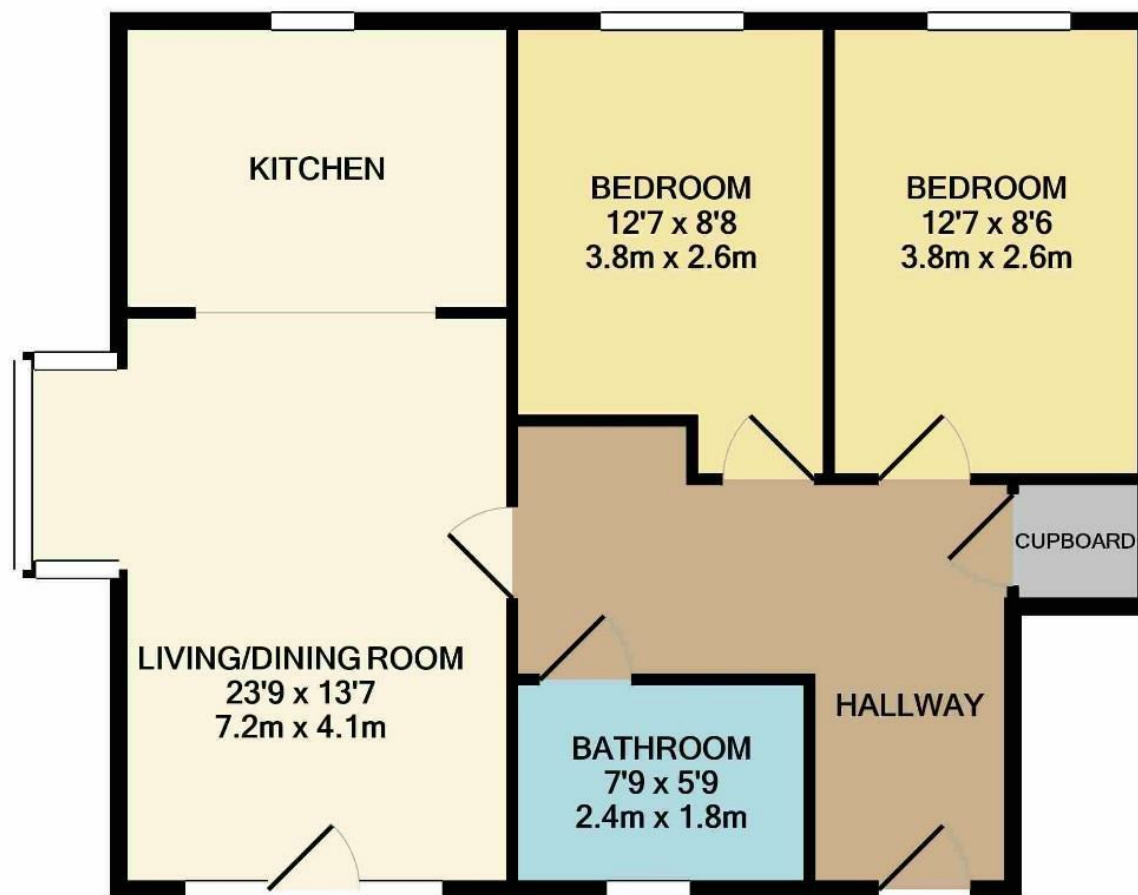
£105,000



****NO CHAIN** VIDEO VIEWING AVAILABLE ** SHARED EQUITY **** A stylishly presented two double bedroom apartment with one allocated parking space. Situated on the ground floor of a purpose built modern development which is close to Handforth village centre and close to local supermarkets and the A34 bypass. This property is ideal for first time buyers as it can be bought on a 75% shared equity basis or on a 100% basis.

The accommodation comprises of an entrance hallway with a recessed storage cupboard, large living/dining room with box bay window (13'7 x 23'9), kitchen (with fitted units and space for fridge freezer, gas hob/oven and washing machine), two double bedrooms and bathroom (with white sanitary ware and electric shower). Externally, there are communal gardens and an allocated parking space. Double glazed and gas fired central heating powered by an Ideal combination boiler (fitted January 2021). Leasehold.





TOTAL APPROX. FLOOR AREA 655 SQ.FT. (60.8 SQ.M.)

Whilst every attempt has been made to ensure the accuracy of the floor plan contained here, measurements of doors, windows, rooms and any other items are approximate and no responsibility is taken for any error, omission, or mis-statement. This plan is for illustrative purposes only and should be used as such by any prospective purchaser. The services, systems and appliances shown have not been tested and no guarantee as to their operability or efficiency can be given

Made with Metropix ©2020