

*tavistockbow*

**For Rent**



**People Make Places**



**Henrietta Street, Covent Garden WC2**

1 bedroom | 463 sq ft

£775 pw





An impressive one bedroom flat on the 1st floor (with lift) of this popular development on Henrietta Street. Refurbished to an exceptional standard and overlooking the picturesque St Paul's gardens, the apartment offers light and airy accommodation within a period building.

#### What you need to know

- One double bedroom
- Modern shower room
- Very high specification
- Comfort cooling & heating
- 1st floor (with lift)
- Furnished
- Available late July
- 24 hour security (no porter)
- Situated at rear of building
- Fiber-optic broadband available



**Henrietta Street, Covent Garden WC2**



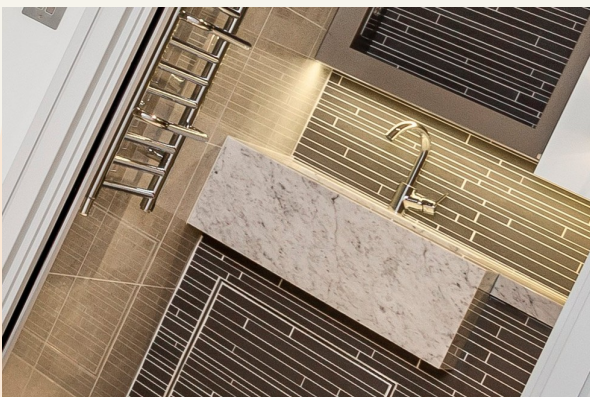
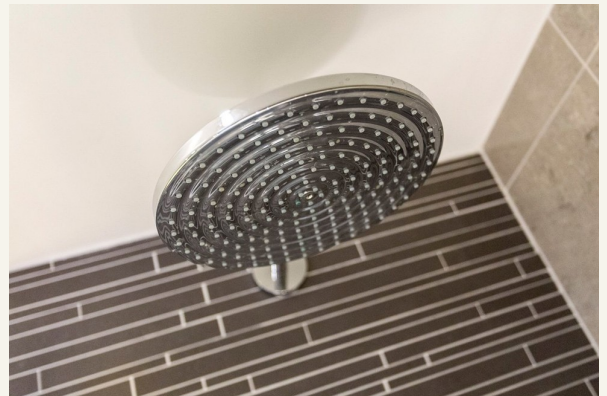
### Overview

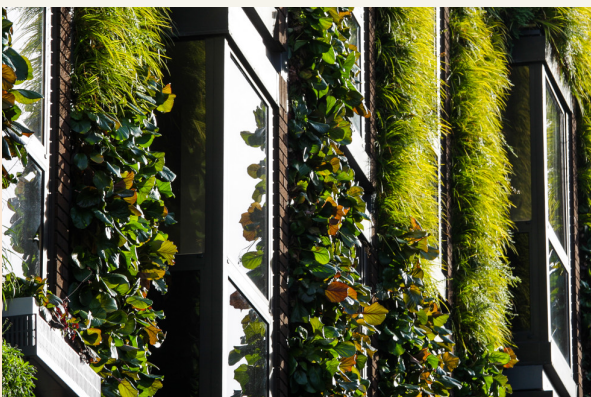
The living room has fantastic views to St Paul's Church gardens, which are open to the public but closed at night. There are slick bianco stone kitchen worktops complimented by a bespoke Dalbergia kitchen. The bathroom has Hans Grohe fittings and under floor heating. There is double glazing and air cooling throughout.

Available late July on a furnished basis. The landlord offers a 1 to 3 year contract, straight or with a minimum 6 or 12 months mutual break clause, as negotiated, subject to satisfactory references and contract. Westminster City Council tax band E.

Henrietta Street is one of Covent Garden's most sought after addresses, being one of the streets that serve the Piazza. The ongoing transformation in recent years sees the street lined with a number of fashion boutiques, luxury retailers, top eateries, favourites include Oystermen, The Henrietta and Flat Iron.







Henrietta Street, Covent Garden WC2

# People Make Places

London is collection of inspiring urban villages and one of the most exciting places in the world to live, work & play.

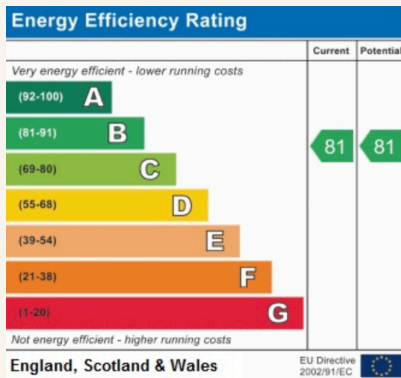
We work with both property owners and their occupiers, sharing the story of these vibrant neighbourhoods, conveying the unique soul & energy to future custodians, the people who'll keep them buzzing.

And unlike many real estate businesses we're not just about buildings, because streets & buildings don't make a neighbourhood.

We're about building relationships, because **people make places**.

MISINTERPRETATION ACT [COPYRIGHT] DISCLAIMER: Tavistock Bow Ltd for themselves and for the vendor(s) of this property whose agents they are, given notice that: 1. These particulars do not constitute, not constitute any part of, an offer or contract. 2. None of the statements contained in these particulars as to the property are to be relied on as statements or representations of fact. 3. Any intending purchaser or lessee must satisfy themselves by inspection or otherwise as to the correctness of each of the statements contained in these particulars. 4. The vendor(s) or lessor(s) do not make or give and neither Tavistock Bow Ltd nor any person in their employment has any authority to make or give any representation or warranty whatever in relation to this property. Finance Act 1989, Unless otherwise stated all prices and rents are quote exclusive of VAT. Property Misrepresentation Act 1991; These details are believed to be correct at the time of compilation but may be subject to subsequent amendment.

Follow us:     @tavistockbow



## Henrietta Street, WC2E

Approximate gross internal area  
43 sq m / 463 sq ft

**First Floor**

Floor Plan produced for Tavistock Bow by Mays Floorplans © . Tel 020 3397 4594  
Illustration for identification purposes only, not to scale  
All measurements are maximum, and include wardrobes and window bays where applicable

**tavistockbow**

21 New Row, Covent Garden,  
London, WC2N 4LE

t: 020 7477 2177  
e: hello@tavistockbow.com  
w: tavistockbow.com



**Henrietta Street, Covent Garden WC2**